

## PE anti-human CD1b

**Catalog # / Size:** 329107 / 25 tests  
329108 / 100 tests

**Clone:** SN13 (K5-1B8)

**Isotype:** Mouse IgG1,  $\kappa$

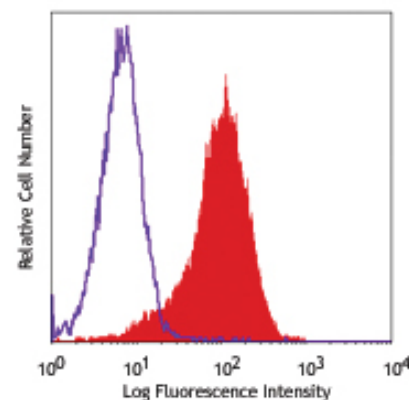
**Immunogen:** Membrane antigen preparation of human thymocytes

**Reactivity:** Human

**Preparation:** The antibody was purified by affinity chromatography and conjugated with PE under optimal conditions. The solution is free of unconjugated PE and unconjugated antibody.

**Formulation:** Phosphate-buffered solution, pH 7.2, containing 0.09% sodium azide and 0.2% (w/v) BSA (origin USA).

**Storage:** The antibody solution should be stored undiluted at 4°C and protected from prolonged exposure to light. **Do not freeze.**



Human T lymphoblastic leukemia cell line, MOLT-4, stained with SN13 PE

## Applications:

**Applications:** FC - Quality tested

**Recommended Usage:** Each lot of this antibody is quality control tested by immunofluorescent staining with flow cytometric analysis. **Test size products are transitioning from 20  $\mu$ l to 5  $\mu$ l per test.** Please check your vial or your CoA to find the suggested use of this reagent per million cells in 100  $\mu$ l staining volume or per 100  $\mu$ l of whole blood. It is recommended that the reagent be titrated for optimal performance for each application. Read more at [www.biolegend.com/testsize](http://www.biolegend.com/testsize) regarding the test size change.

**Application References:** 1. Hayes SM, *et al.* 2001. *J. Immunol.* 166:403. (IF)  
2. Martin LH, *et al.* 1987. *P. Natl. Acad. Sci. USA* 84:918993. (IF)

**Description:** CD1b is a 43 kD member of the immunoglobulin superfamily also known as R1. It is a type I membrane glycoprotein with structural similarities to MHC class I and is non-covalently associated with  $\beta$ 2-microglobulin. In humans, CD1 family consists of group I proteins (CD1a, CD1b, CD1c), group II (CD1d), and group III (CD1e). CD1b plays a role in non-peptide glycolipid antigen presentation to CD1-restricted T cells. It is expressed on cortical double positive and single positive thymocytes, Langerhans cells, and dendritic cells. In addition to antigen presentation, CD1b has been implicated in thymic T cell development.

**Antigen References:** 1. Porcelli S, *et al.* 1992. *Nature* 360:5937.  
2. Giuliani A, *et al.* 2001. *Infect. Immun.* 69:746170.

Related Products:	Product	Clone	Application
	PE Mouse IgG1, $\kappa$ Isotype Ctrl (FC)	MOPC-21	FC
	Cell Staining Buffer		FC, ICC, ICFC
	RBC Lysis Buffer (10X)		FC, ICFC
	Human TruStain FcX™ (Fc Receptor Blocking Solution)		FC, ICC, ICFC



For research use only. Not for diagnostic use. Not for resale. BioLegend will not be held responsible for patent infringement or other violations that may occur with the use of our products.



\*These products may be covered by one or more Limited Use Label Licenses (see the BioLegend Catalog or our website, [www.biolegend.com/ordering#license](http://www.biolegend.com/ordering#license)). BioLegend products may not be transferred to third parties, resold, modified for resale, or used to manufacture commercial products, reverse engineer functionally similar materials, or to provide a service to third parties without written approval of BioLegend. By use of these products you accept the terms and conditions of all applicable Limited Use Label Licenses. Unless otherwise indicated, these products are for research use only and are not intended for human or animal diagnostic, therapeutic or commercial use.