

# Product Data Sheet

## Alexa Fluor® 647 anti-human CD3

**Catalog # / Size:** 300422 / 25 tests  
300416 / 100 tests

**Clone:** UCHT1

**Isotype:** Mouse IgG1,  $\kappa$

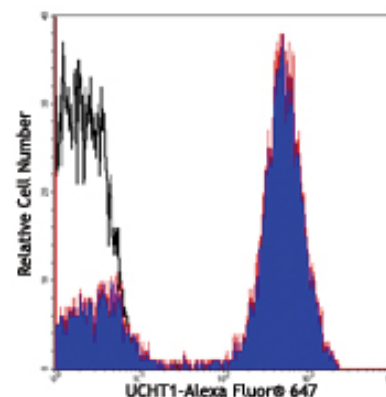
**Workshop Number:** III 471

**Reactivity:** Human, **Cross-Reactivity:** Chimpanzee

**Preparation:** The antibody was purified by affinity chromatography, and conjugated with Alexa Fluor® 647 under optimal conditions. The solution is free of unconjugated Alexa Fluor® 647.

**Formulation:** Phosphate-buffered solution, pH 7.2, containing 0.09% sodium azide and 0.2% (w/v) BSA (origin USA).

**Storage:** The antibody solution should be stored undiluted at 4°C and protected from prolonged exposure to light. **Do not freeze.**



Human peripheral blood lymphocytes stained with UCHT1 Alexa Fluor 647®

## Applications:

**Applications:** FC - Quality tested

**Recommended Usage:** Each lot of this antibody is quality control tested by immunofluorescent staining with flow cytometric analysis. For immunofluorescent staining, the suggested use of this reagent is 5  $\mu$ l per million cells or 5  $\mu$ l per 100  $\mu$ l of whole blood. It is recommended that the reagent be titrated for optimal performance for each application.

\* Alexa Fluor® 647 has a maximum emission of 668 nm when it is excited at 633nm / 635nm.

\*\* Alexa Fluor® is a registered trademark of Molecular Probes, Inc. Alexa Fluor® dye antibody conjugates are sold under license from Molecular Probes, Inc. for research use only, except for use in combination with microarrays and high content screening, and are covered by pending and issued patents.

**Application Notes:** Additional reported applications (for the relevant formats) include: immunohistochemical staining of acetone-fixed frozen sections<sup>4,6,7</sup> and formalin-fixed paraffin-embedded sections<sup>11</sup>, immunoprecipitation<sup>1</sup>, activation of T cells<sup>2,3,5</sup>, and Western blotting<sup>9</sup>. The LEAF™ purified antibody (Endotoxin <0.1 EU/ $\mu$ g, Azide-Free, 0.2  $\mu$ m filtered) is recommended for functional assays (Cat. No. 300414). For highly sensitive assays, we recommend Ultra-LEAF™ purified antibody (Cat. No. 300438) with a lower endotoxin limit than standard LEAF™ purified antibodies (Endotoxin <0.01 EU/ $\mu$ g).

**Application References:**

1. Salmeron A, *et al.* 1991. *J. Immunol.* 147:3047. (IP)
2. Graves J, *et al.* 1991. *J. Immunol.* 146:2102. (Activ)
3. Lafont V, *et al.* 2000. *J. Biol. Chem.* 275:19282. (Activ)
4. Ryschich E, *et al.* 2003. *Tissue Antigens* 62:48. (IHC)
5. Thompson AG, *et al.* 2004. *J. Immunol.* 173:1671. (Activ)
6. Sakkas LI, *et al.* 1998. *Clin. Diagn. Lab. Immun.* 5:430. (IHC)
7. Mack CL, *et al.* 2004. *Pediatr. Res.* 56:79. (IHC)
8. Thakral D, *et al.* 2008. *J. Immunol.* 180:7431. (FC) PubMed
9. Van Dongen JJM, *et al.* 1988. *Blood* 71:603. (WB)
10. Yoshino N, *et al.* 2000. *Exp. Anim. (Tokyo)* 49:97. (FC)
11. Pollard, K. *et al.* 1987. *J. Histochem. Cytochem.* 35:1329. (IHC)

**Description:** CD3 $\epsilon$  is a 20 kD chain of the CD3/T-cell receptor (TCR) complex which is composed of two CD3 $\epsilon$ , one CD3 $\gamma$ , one CD3 $\delta$ , one CD3 $\zeta$  (CD247), and a T-cell receptor ( $\alpha/\beta$  or  $\gamma/\delta$ ) heterodimer. It is found on all mature T lymphocytes, NK-T cells, and some thymocytes. CD3, also known as T3, is a member of the immunoglobulin superfamily that plays a role in antigen recognition, signal transduction, and T cell activation.

**Antigen References:**

1. Barclay N, *et al.* 1993. *The Leucocyte FactsBook*. Academic Press. San Diego.
2. Beverly P, *et al.* 1981. *Eur. J. Immunol.* 11:329.
3. Lanier L, *et al.* 1986. *J. Immunol.* 137:2501-2507.

### Related Products:

Product  
Cell Staining Buffer  
RBC Lysis Buffer (10X)  
Alexa Fluor® 647 Mouse IgG1,  $\kappa$  Isotype Ctrl (FC)  
Human TruStain FcX™ (Fc Receptor Blocking Solution)

### Clone

MOPC-21

### Application

FC, ICC, ICFC  
FC, ICFC  
FC, IF  
FC, ICC, ICFC



For research use only. Not for diagnostic use. Not for resale. BioLegend will not be held responsible for patent infringement or other violations that may occur with the use of our products.



\*These products may be covered by one or more Limited Use Label Licenses (see the BioLegend Catalog or our website, [www.biollegend.com/ordering#license](http://www.biollegend.com/ordering#license)). BioLegend products may not be transferred to third parties, resold, modified for resale, or used to manufacture commercial products, reverse engineer functionally similar materials, or to provide a service to third parties without written approval of BioLegend. By use of these products you accept the terms and conditions of all applicable Limited Use Label Licenses. Unless otherwise indicated, these products are for research use only and are not intended for human or animal diagnostic, therapeutic or commercial use.