

# Product Data Sheet

## Pacific Blue™ anti-human CD3

**Catalog # / Size:** 300329 / 25 tests  
300330 / 100 tests

**Clone:** HIT3a

**Isotype:** Mouse IgG2a,  $\kappa$

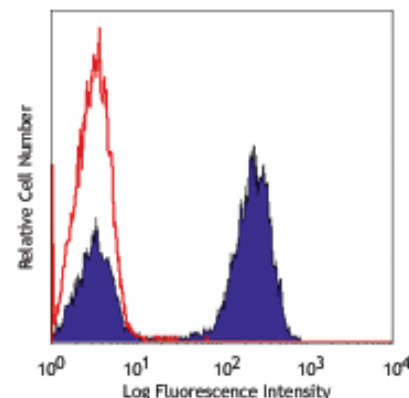
**Workshop Number:** V CD03.05

**Reactivity:** Human

**Preparation:** The antibody was purified by affinity chromatography, and conjugated with Pacific Blue™ under optimal conditions. The solution is free of unconjugated Pacific Blue™.

**Formulation:** Phosphate-buffered solution, pH 7.2, containing 0.09% sodium azide and 0.2% (w/v) BSA (origin USA).

**Storage:** The antibody solution should be stored undiluted at 4°C and protected from prolonged exposure to light. **Do not freeze.**



Human peripheral blood lymphocytes stained with HIT3a Pacific Blue™

## Applications:

**Applications:** FC - Quality tested

**Recommended Usage:** Each lot of this antibody is quality control tested by immunofluorescent staining with flow cytometric analysis. For immunofluorescent staining, the suggested use of this reagent is  $\leq 2.0 \mu\text{g}$  per  $10^6$  cells in 100  $\mu\text{l}$  volume or 100  $\mu\text{l}$  of whole blood. It is recommended that the reagent be titrated for optimal performance for each application.

\* Pacific Blue™ has a maximum emission of 455 nm when it is excited at 405 nm. Prior to using Pacific Blue™ conjugate for flow cytometric analysis, please verify your flow cytometer's capability of exciting and detecting the fluorochrome.

\*\* Pacific Blue™ is a registered trademark of Molecular Probes, Inc. Pacific Blue™ dye antibody conjugates are sold under license from Molecular Probes, Inc. for research use only, except for use in combination with microarrays and high content screening, and are covered by pending and issued patents.

**Application Notes:** Additional reported (for the relevant formats) applications include: immunohistochemical staining of acetone-fixed frozen sections, immunoprecipitation, and activation of T lymphocytes<sup>4-7</sup>. The HIT3a antibody is able to stimulate T cell activation. The LEAF™ purified antibody (Endotoxin  $<0.1 \text{ EU}/\mu\text{g}$ , Azide-Free, 0.2  $\mu\text{m}$  filtered) is recommended for functional assays (Cat. No. 300314). For highly sensitive assays, we recommend Ultra-LEAF™ purified antibody (Cat. No. 300332) with a lower endotoxin limit than standard LEAF™ purified antibodies (Endotoxin  $<0.01 \text{ EU}/\mu\text{g}$ ).

**Application References:**

- Schlossman S, *et al.* Eds. 1995. Leucocyte Typing V. Oxford University Press. New York.
- Knapp W. 1989. Leucocyte Typing IV. Oxford University Press New York.
- Barclay N, *et al.* 1997. The Leucocyte Antigen Facts Book. Academic Press Inc. San Diego.
- Sedelies KA, *et al.* 2004. *J. Biol. Chem.* 279:26581. (Activ)
- Rivollier A, *et al.* 2004. *Blood* 104:4029. (Activ)
- Scharschmidt E, *et al.* 2004. *Mol. Cell Biol.* 24:3860. (Activ)
- Smeltz RB. 2007. *J. Immunol.* 178:4786. (Activ)

**Description:** CD3 $\epsilon$  is a 20 kD chain of the CD3/T-cell receptor (TCR) complex which is composed of two CD3 $\epsilon$ , one CD3 $\gamma$ , one CD3 $\delta$ , one CD3 $\zeta$  (CD247), and a T-cell receptor ( $\alpha/\beta$  or  $\gamma/\delta$ ) heterodimer. It is found on all mature T lymphocytes, NK-T cells, and some thymocytes. CD3, also known as T3, is a member of the immunoglobulin superfamily that plays a role in antigen recognition, signal transduction, and T cell activation.

**Antigen References:**

- Barclay N, *et al.* 1993. The Leucocyte FactsBook. Academic Press. San Diego.
- Beverly P, *et al.* 1981. *Eur. J. Immunol.* 11:329.
- Lanier L, *et al.* 1986. *J. Immunol.* 137:2501-2507.

### Related Products:

Pacific Blue™ Mouse IgG2a,  $\kappa$  Isotype Ctrl  
 Cell Staining Buffer  
 RBC Lysis Buffer (10X)  
 Human TruStain FcX™ (Fc Receptor Blocking Solution)

**Clone**  
 MOPC-173

**Application**  
 FC, ICFC  
 FC, ICC, ICFC  
 FC, ICFC  
 FC, ICC, ICFC



For research use only. Not for diagnostic use. Not for resale. BioLegend will not be held responsible for patent infringement or other violations that may occur with the use of our products.



\*These products may be covered by one or more Limited Use Label Licenses (see the BioLegend Catalog or our website, [www.biollegend.com/ordering#license](http://www.biollegend.com/ordering#license)). BioLegend products may not be transferred to third parties, resold, modified for resale, or used to manufacture commercial products, reverse engineer functionally similar materials, or to provide a service to third parties without written approval of BioLegend. By use of these products you accept the terms and conditions of all applicable Limited Use Label Licenses. Unless otherwise indicated, these products are for research use only and are not intended for human or animal diagnostic, therapeutic or commercial use.