

## PE anti-human CD3

**Catalog # / Size:** 300307 / 25 tests  
300308 / 100 tests

**Clone:** HIT3a

**Isotype:** Mouse IgG2a,  $\kappa$

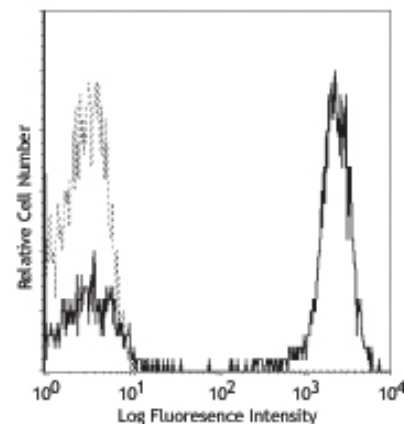
**Workshop Number:** V CD03.05

**Reactivity:** Human

**Preparation:** The antibody was purified by affinity chromatography, and conjugated with PE under optimal conditions. The solution is free of unconjugated PE and unconjugated antibody.

**Formulation:** Phosphate-buffered solution, pH 7.2, containing 0.09% sodium azide and 0.2% (w/v) BSA (origin USA).

**Storage:** The antibody solution should be stored undiluted at 4°C and protected from prolonged exposure to light. **Do not freeze.**



Human peripheral blood lymphocytes stained with HIT3a PE

## Applications:

**Applications:** FC - Quality tested

**Recommended Usage:** Each lot of this antibody is quality control tested by immunofluorescent staining with flow cytometric analysis. **Test size products are transitioning from 20  $\mu$ l to 5  $\mu$ l per test.** Please check your vial or your CoA to find the suggested use of this reagent per million cells in 100  $\mu$ l staining volume or per 100  $\mu$ l of whole blood. It is recommended that the reagent be titrated for optimal performance for each application. Read more at [www.biolegend.com/testsize](http://www.biolegend.com/testsize) regarding the test size change.

**Application Notes:** Additional reported (for the relevant formats) applications include: immunohistochemical staining of acetone-fixed frozen sections, immunoprecipitation, and activation of T lymphocytes<sup>4-7</sup>. The HIT3a antibody is able to stimulate T cell activation. The LEAF™ purified antibody (Endotoxin <0.1 EU/ $\mu$ g, Azide-Free, 0.2  $\mu$ m filtered) is recommended for functional assays (Cat. No. 300314). For highly sensitive assays, we recommend Ultra-LEAF™ purified antibody (Cat. No. 300332) with a lower endotoxin limit than standard LEAF™ purified antibodies (Endotoxin <0.01 EU/ $\mu$ g).

**Application References:**

- Schlossman S, *et al.* Eds. 1995. Leucocyte Typing V. Oxford University Press. New York.
- Knapp W. 1989. Leucocyte Typing IV. Oxford University Press New York.
- Barclay N, *et al.* 1997. The Leucocyte Antigen Facts Book. Academic Press Inc. San Diego.
- Sedelies KA, *et al.* 2004. *J. Biol. Chem.* 279:26581. (Activ)
- Rivollier A, *et al.* 2004. *Blood* 104:4029. (Activ)
- Scharschmidt E, *et al.* 2004. *Mol. Cell Biol.* 24:3860. (Activ)
- Smeltz RB. 2007. *J. Immunol.* 178:4786. (Activ)
- Enghard P, *et al.* 2013. *Ann Rheum Dis.* PubMed.

**Description:** CD3 $\epsilon$  is a 20 kD chain of the CD3/T-cell receptor (TCR) complex which is composed of two CD3 $\epsilon$ , one CD3 $\gamma$ , one CD3 $\delta$ , one CD3 $\zeta$  (CD247), and a T-cell receptor ( $\alpha/\beta$  or  $\gamma/\delta$ ) heterodimer. It is found on all mature T lymphocytes, NK-T cells, and some thymocytes. CD3, also known as T3, is a member of the immunoglobulin superfamily that plays a role in antigen recognition, signal transduction, and T cell activation.

**Antigen References:**

- Barclay N, *et al.* 1993. The Leucocyte FactsBook. Academic Press. San Diego.
- Beverly P, *et al.* 1981. *Eur. J. Immunol.* 11:329.
- Lanier L, *et al.* 1986. *J. Immunol.* 137:2501-2507.

### Related Products:

Product	Clone	Application
PE anti-human CD19	HIB19	FC
PE anti-human CD8a	HIT8a	FC
PE anti-human CD4	RPA-T4	FC
PE anti-human CD8a	RPA-T8	FC
PE anti-human CD3	UCHT1	FC
PE Mouse IgG2a, $\kappa$ Isotype Ctrl	MOPC-173	FC, ICFC
Cell Staining Buffer		FC, ICC, ICFC
RBC Lysis Buffer (10X)		FC, ICFC
Human TruStain FcX™ (Fc Receptor Blocking Solution)		FC, ICC, ICFC



For research use only. Not for diagnostic use. Not for resale. BioLegend will not be held responsible for patent infringement or other violations that may occur with the use of our products.



\*These products may be covered by one or more Limited Use Label Licenses (see the BioLegend Catalog or our website, [www.biolegend.com/ordering#license](http://www.biolegend.com/ordering#license)). BioLegend products may not be transferred to third parties, resold, modified for resale, or used to manufacture commercial products, reverse engineer functionally similar materials, or to provide a service to third parties without written approval of BioLegend. By use of these products you accept the terms and conditions of all applicable Limited Use Label Licenses. Unless otherwise indicated, these products are for research use only and are not intended for human or animal diagnostic, therapeutic or commercial use.