

Product Data Sheet

Biotin anti-human CD3

Catalog # / Size: 300303 / 25 µg
300304 / 100 µg

Clone: HIT3a

Isotype: Mouse IgG2a, κ

Workshop Number: V CD03.05

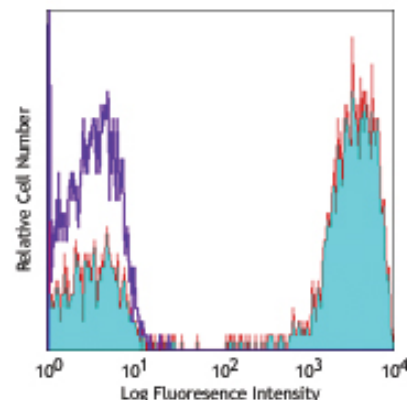
Reactivity: Human

Preparation: The antibody was purified by affinity chromatography, and conjugated with biotin under optimal conditions. The solution is free of unconjugated biotin.

Formulation: Phosphate-buffered solution, pH 7.2, containing 0.09% sodium azide.

Concentration: 0.5 mg/ml

Storage: The antibody solution should be stored undiluted at 4°C. **Do not freeze.**



Human peripheral blood lymphocytes stained with biotinylated HIT3a, followed by Sav-PE

Applications:

Applications: FC - Quality tested

Recommended Usage: Each lot of this antibody is quality control tested by immunofluorescent staining with flow cytometric analysis. For immunofluorescent staining, the suggested use of this reagent is ≤0.5 µg per million cells in 100 µl volume. It is recommended that the reagent be titrated for optimal performance for each application.

Application Notes: Additional reported (for the relevant formats) applications include: immunohistochemical staining of acetone-fixed frozen sections, immunoprecipitation, and activation of T lymphocytes⁴⁻⁷. The HIT3a antibody is able to stimulate T cell activation. The LEAF™ purified antibody (Endotoxin <0.1 EU/µg, Azide-Free, 0.2 µm filtered) is recommended for functional assays (Cat. No. 300314). For highly sensitive assays, we recommend Ultra-LEAF™ purified antibody (Cat. No. 300332) with a lower endotoxin limit than standard LEAF™ purified antibodies (Endotoxin <0.01 EU/µg).

Application References:

- Schlossman S, *et al.* Eds. 1995. Leucocyte Typing V. Oxford University Press. New York.
- Knapp W. 1989. Leucocyte Typing IV. Oxford University Press New York.
- Barclay N, *et al.* 1997. The Leucocyte Antigen Facts Book. Academic Press Inc. San Diego.
- Sedelies KA, *et al.* 2004. *J. Biol. Chem.* 279:26581. (Activ)
- Rivollier A, *et al.* 2004. *Blood* 104:4029. (Activ)
- Scharschmidt E, *et al.* 2004. *Mol. Cell Biol.* 24:3860. (Activ)
- Smeltz RB. 2007. *J. Immunol.* 178:4786. (Activ)

Description: CD3ε is a 20 kD chain of the CD3/T-cell receptor (TCR) complex which is composed of two CD3ε, one CD3γ, one CD3δ, one CD3ζ (CD247), and a T-cell receptor (α/β or γ/δ) heterodimer. It is found on all mature T lymphocytes, NK-T cells, and some thymocytes. CD3, also known as T3, is a member of the immunoglobulin superfamily that plays a role in antigen recognition, signal transduction, and T cell activation.

Antigen References:

- Barclay N, *et al.* 1993. The Leucocyte FactsBook. Academic Press. San Diego.
- Beverly P, *et al.* 1981. *Eur. J. Immunol.* 11:329.
- Lanier L, *et al.* 1986. *J. Immunol.* 137:2501-2507.

Related Products:

Product
 Biotin anti-human CD19
 Biotin anti-human CD8a
 Biotin anti-human CD4
 Biotin anti-human CD8a
 Biotin anti-human CD3
 Biotin Mouse IgG2a, κ Isotype Ctrl
 APC Streptavidin
 APC/Cy7 Streptavidin
 HRP Streptavidin
 PE Streptavidin
 PE/Cy5 Streptavidin
 PE/Cy7 Streptavidin
 Cell Staining Buffer
 RBC Lysis Buffer (10X)
 Human TruStain FcX™ (Fc Receptor Blocking Solution)

Clone
 HIB19
 HIT8a
 RPA-T4
 RPA-T8
 UCHT1
 MOPC-173

Application
 FC
 FC
 FC
 FC
 FC
 FC, ICFC
 FC, ICFC
 FC, ICFC
 ELISA, ELISPOT, IHC, WB
 FC, ICFC
 FC, ICFC
 FC, ICFC
 FC, ICFC
 FC, ICC, ICFC
 FC, ICFC
 FC, ICC, ICFC



For research use only. Not for diagnostic use. Not for resale. BioLegend will not be held responsible for patent infringement or other violations that may occur with the use of our products.



*These products may be covered by one or more Limited Use Label Licenses (see the BioLegend Catalog or our website, www.biollegend.com/ordering#license). BioLegend products may not be transferred to third parties, resold, modified for resale, or used to manufacture commercial products, reverse engineer functionally similar materials, or to provide a service to third parties without written approval of BioLegend. By use of these products you accept the terms and conditions of all applicable Limited Use Label Licenses. Unless otherwise indicated, these products are for research use only and are not intended for human or animal diagnostic, therapeutic or commercial use.