

## Biotin anti-human CD2

**Catalog # / Size:** 300203 / 25 µg  
300204 / 100 µg

**Clone:** RPA-2.10

**Isotype:** Mouse IgG1, κ

**Workshop Number:** IV T085

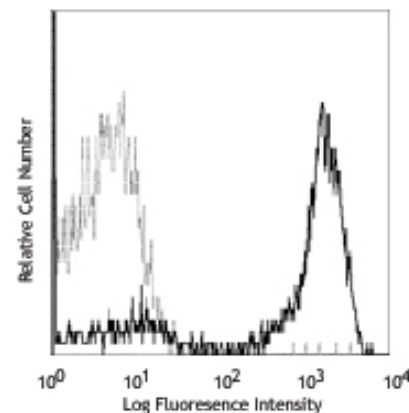
**Reactivity:** Human, **Cross-Reactivity:** Chimpanzee, Baboon, Cynomolgus, Rhesus, Pigtailed Macaque, Capuchin Monkey, Swine (Pig, Porcine)

**Preparation:** The antibody was purified by affinity chromatography, and conjugated with biotin under optimal conditions. The solution is free of unconjugated biotin.

**Formulation:** Phosphate-buffered solution, pH 7.2, containing 0.09% sodium azide.

**Concentration:** 0.5 mg/ml

**Storage:** The antibody solution should be stored undiluted at 4°C. **Do not freeze.**



Human peripheral blood lymphocytes stained with biotinylated RPA-2.10 and detected with Sav-PE

## Applications:

**Applications:** FC - Quality tested

**Recommended Usage:** Each lot of this antibody is quality control tested by immunofluorescent staining with flow cytometric analysis. For immunofluorescent staining, the suggested use of this reagent is ≤0.25 µg per million cells in 100 µl volume. It is recommended that the reagent be titrated for optimal performance for each application.

**Application Notes:** Additional reported applications (for the relevant formats) include: immunohistochemical staining of acetone-fixed frozen tissue sections<sup>6</sup> and blocking of T cell activation<sup>2</sup>. The LEAF™ purified antibody (Endotoxin <0.1 EU/µg, Azide-Free, 0.2 µm filtered) is recommended for functional assays (Cat. No. 300212).

**Application References:**

- Knapp W, *et al.* Eds. 1989. Leucocyte Typing IV. Oxford University Press. New York.
- Aversa G, *et al.* 1987. *Transplant. Proc.* 19:277. (Block)
- Zaretsky AG, *et al.* 2009. *J. Exp. Med.* 206:991. (IHC) PubMed
- Perona-Wright G, *et al.* 2010. *Nat. Immunol.* 11:520. (FC) PubMed
- Thummler K, *et al.* 2010. *J. Leukoc. Biol.* 88:1041.
- Kap Y, *et al.* 2009. *J. Histochem. Cytochem.* 57:1159. (IHC)
- Yoshino N, *et al.* 2000. *Exp. Anim. (Tokyo)* 49:97. (FC)

**Description:** CD2 is a 50 kD type I transmembrane glycoprotein also known as LFA-2, T11, and sheep red blood cell receptor (SRBC-R). This immunoglobulin superfamily member is expressed on thymocytes, T lymphocytes, NK cells, and thymic B cell subsets. The major ligand for CD2 is CD58 (also known as LFA-3). CD2 has also been reported to bind CD48, CD59, and CD15. CD2 plays a critical role in alternative T cell activation, T cell signaling, and cell-cell adhesion.

**Antigen References:**

- Bell G, *et al.* 1995. *J. Immunol.* 155:2805.
- Bierer B, *et al.* 1989. *Annu. Rev. Immunol.* 7:579.
- Moingeon P, *et al.* 1989. *Immunol. Rev.* 111:111.

### Related Products:Product

Product	Clone	Application
Biotin anti-human CD3	HIT3a	FC
Biotin anti-human CD3	UCHT1	FC
Biotin Mouse IgG1, κ Isotype Ctrl	MOPC-21	FC, ICFC
APC Streptavidin		FC, ICFC
APC/Cy7 Streptavidin		FC, ICFC
HRP Streptavidin		ELISA, ELISPOT, IHC, WB
PE Streptavidin		FC, ICFC
PE/Cy5 Streptavidin		FC, ICFC
PE/Cy7 Streptavidin		FC, ICFC
Cell Staining Buffer		FC, ICC, ICFC
RBC Lysis Buffer (10X)		FC, ICFC
Biotin anti-human CD2	TS1/8	FC
Human TruStain FcX™ (Fc Receptor Blocking Solution)		FC, ICC, ICFC



For research use only. Not for diagnostic use. Not for resale. BioLegend will not be held responsible for patent infringement or other violations that may occur with the use of our products.



\*These products may be covered by one or more Limited Use Label Licenses (see the BioLegend Catalog or our website, [www.biolegend.com/ordering#license](http://www.biolegend.com/ordering#license)). BioLegend products may not be transferred to third parties, resold, modified for resale, or used to manufacture commercial products, reverse engineer functionally similar materials, or to provide a service to third parties without written approval of BioLegend. By use of these products you accept the terms and conditions of all applicable Limited Use Label Licenses. Unless otherwise indicated, these products are for research use only and are not intended for human or animal diagnostic, therapeutic or commercial use.