

## PE/Cy5 anti-human CD1a

**Catalog # / Size:** 300108 / 100 tests

**Clone:** HI149

**Isotype:** Mouse IgG1,  $\kappa$

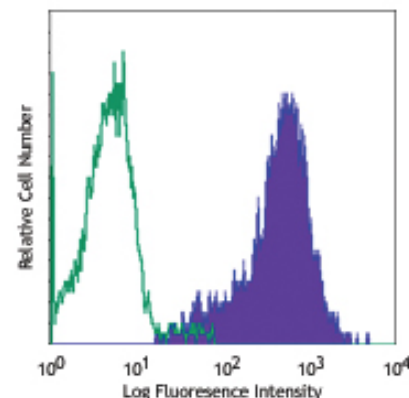
**Workshop Number:** V CD01.01

**Reactivity:** Human

**Preparation:** The antibody was purified by affinity chromatography, and conjugated with PE/Cy5 under optimal conditions. The solution is free of unconjugated PE/Cy5 and unconjugated antibody.

**Formulation:** Phosphate-buffered solution, pH 7.2, containing 0.09% sodium azide and 0.2% (w/v) BSA (origin USA).

**Storage:** The antibody solution should be stored undiluted at 4°C and protected from prolonged exposure to light. **Do not freeze.**



Human T lymphoblastic leukemia cell line Molt-4 stained with HI149 PE/Cy5

## Applications:

**Applications:** FC - Quality tested

**Recommended Usage:** Each lot of this antibody is quality control tested by immunofluorescent staining with flow cytometric analysis. **Test size products are transitioning from 20  $\mu$ l to 5  $\mu$ l per test.** Please check your vial or your CoA to find the suggested use of this reagent per million cells in 100  $\mu$ l staining volume or per 100  $\mu$ l of whole blood. It is recommended that the reagent be titrated for optimal performance for each application. Read more at [www.biolegend.com/testsize](http://www.biolegend.com/testsize) regarding the test size change.

**Application Notes:** Additional reported applications (for the relevant formats) include: immunohistochemical staining of acetone-fixed frozen tissue sections.

Cy3, Cy5, Cy5.5 and Cy7 are subject to proprietary rights of GE Healthcare Bio-Sciences Corp. and Carnegie Mellon University and made and sold under license from GE Healthcare Bio-Sciences Corp. Sale of this product is licensed for research use only.

**Application References:**

- Schlossman S, *et al.* Eds. 1995. Leucocyte Typing V. Oxford University Press. New York.
- Knapp W. 1989. Leucocyte Typing IV. Oxford University Press New York.
- Patton KM, *et al.* 2005. *Infect. Immun.*73:2083. PubMed
- Curti A, *et al.* 2010. *Haematologica.* 95:2022. PubMed

**Description:** CD1a is a 49 kD member of the immunoglobulin superfamily also known as T6 and R4. It is a type I membrane glycoprotein with structural similarities to MHC class I and is non-covalently associated with  $\beta_2$ -microglobulin. CD1a plays a role in non-peptide glycolipid antigen presentation to CD1-restricted T cells. It is expressed on cortical double positive and single positive thymocytes, Langerhans cells, and dendritic cells. In addition to antigen presentation, CD1a has been implicated in thymic T cell development.

**Antigen References:**

- Blumberg RS, *et al.* 1995. *Immunol. Rev.* 147:5.
- Calabi F, *et al.* 1991. *Tissue Antigens* 37:1.
- Melian A, *et al.* 1996. *Curr. Opin. Immunol.* 8:82.

### Related Products:

<b>Product</b>	<b>Clone</b>
PE/Cy5 anti-human CD83	HB15e
PE/Cy5 Mouse IgG1, $\kappa$ Isotype Ctrl	MOPC-21
Cell Staining Buffer	
RBC Lysis Buffer (10X)	
Human TruStain FcX™ (Fc Receptor Blocking Solution)	

<b>Application</b>
FC
FC, ICFC
FC, ICC, ICFC
FC, ICFC
FC, ICC, ICFC



For research use only. Not for diagnostic use. Not for resale. BioLegend will not be held responsible for patent infringement or other violations that may occur with the use of our products.



\*These products may be covered by one or more Limited Use Label Licenses (see the BioLegend Catalog or our website, [www.biolegend.com/ordering#license](http://www.biolegend.com/ordering#license)). BioLegend products may not be transferred to third parties, resold, modified for resale, or used to manufacture commercial products, reverse engineer functionally similar materials, or to provide a service to third parties without written approval of BioLegend. By use of these products you accept the terms and conditions of all applicable Limited Use Label Licenses. Unless otherwise indicated, these products are for research use only and are not intended for human or animal diagnostic, therapeutic or commercial use.