

Product Data Sheet

Purified anti-rat RT1D

Catalog # / Size: 205401 / 100 µg

Clone: OX-17

Isotype: Mouse IgG1, κ

Immunogen: Wistar rat splenocyte membrane extract

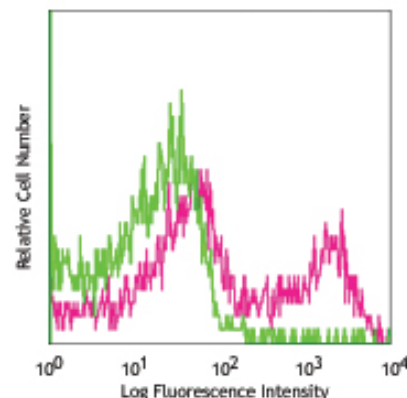
Reactivity: Rat

Preparation: The antibody was purified by affinity chromatography.

Formulation: Phosphate-buffered solution, pH 7.2, containing 0.09% sodium azide.

Concentration: 0.5 mg/ml

Storage: The antibody solution should be stored undiluted at 4°C.



LOU rat splenocytes stained with purified OX-17, followed by anti-mouse IgG PE

Applications:

Applications: FC - *Quality tested*
 IHC - *Reported in the literature*

Recommended Usage: Each lot of this antibody is quality control tested by immunofluorescent staining with flow cytometric analysis. For immunofluorescent staining, the suggested use of this reagent is ≤ 0.25 µg per 10^6 cells in 100 µl volume. It is recommended that the reagent be titrated for optimal performance for each application.

Application References: 1. Mayrhofer G *et al.* 1983. *Eur J Immunol* 13:1122. Fukumoto T *et al.* 1982. *Eur J Immunol* 12:237

Description: The OX-17 antibody reacts with a non-polymorphic determinant of rat MHC class II antigen. It is found primarily on the surface of B lymphocytes, macrophages, dendritic cells and other antigen presenting cells.

Antigen References: 1. Mayrhofer G *et al.* 1983. *Eur J Immunol* 13:1122. Fukumoto T *et al.* 1982. *Eur J Immunol* 12:237

Related Products:

Product
 Purified Mouse IgG1, κ *Isotype Ctrl*
Cell Staining Buffer
RBC Lysis Buffer (10X)

Clone
 MOPC-21

Application
 FC, ICFC, ICC, IF, IHC, IP, WB
 FC, ICC, ICFC
 FC, ICFC



For research use only. Not for diagnostic use. Not for resale. BioLegend will not be held responsible for patent infringement or other violations that may occur with the use of our products.



*These products may be covered by one or more Limited Use Label Licenses (see the BioLegend Catalog or our website, www.biollegend.com/ordering#license). BioLegend products may not be transferred to third parties, resold, modified for resale, or used to manufacture commercial products, reverse engineer functionally similar materials, or to provide a service to third parties without written approval of BioLegend. By use of these products you accept the terms and conditions of all applicable Limited Use Label Licenses. Unless otherwise indicated, these products are for research use only and are not intended for human or animal diagnostic, therapeutic or commercial use.