

# Product Data Sheet

## PE anti-rat RT1A

**Catalog # / Size:** 205208 / 100 µg

**Clone:** OX-18

**Isotype:** Mouse IgG1, κ

**Immunogen:** RT1B-depleted membrane glycoproteins isolated from Wistar rat spleen

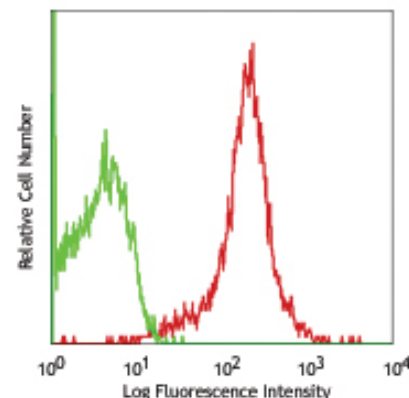
**Reactivity:** Rat

**Preparation:** The antibody was purified by affinity chromatography, and conjugated with PE under optimal conditions. The solution is free of unconjugated PE and unconjugated antibody.

**Formulation:** Phosphate-buffered solution, pH 7.2, containing 0.09% sodium azide.

**Concentration:** 0.2 mg/ml

**Storage:** The antibody solution should be stored undiluted at 4°C and protected from prolonged exposure to light. **Do not freeze.**



LOU rat splenocytes stained with OX-18 PE

## Applications:

**Applications:** FC - *Quality tested*

**Recommended Usage:** Each lot of this antibody is quality control tested by immunofluorescent staining with flow cytometric analysis. For immunofluorescent staining, the suggested use of this reagent is  $\leq 0.25$  µg per  $10^6$  cells in 100 µl volume. It is recommended that the reagent be titrated for optimal performance for each application.

**Application Notes:** Additional reported applications (For the relevant formats) include: immunohistochemical staining of acetone-fixed frozen sections, immunoprecipitation, and blocking function.

**Description:** The rat monomorphic MHC class I antigen RT1A is expressed on nucleated cells (except neurons and glial cells) and erythrocytes. RT1A is involved in antigen presentation to T cells expressing CD3/TCR and CD8 proteins.

### Related Products:

**Product**  
 PE Mouse IgG1, κ Isotype Ctrl  
 Cell Staining Buffer  
 RBC Lysis Buffer (10X)

**Clone**  
 MOPC-21

**Application**  
 FC, ICFC  
 FC, ICC, ICFC  
 FC, ICFC



For research use only. Not for diagnostic use. Not for resale. BioLegend will not be held responsible for patent infringement or other violations that may occur with the use of our products.



\*These products may be covered by one or more Limited Use Label Licenses (see the BioLegend Catalog or our website, [www.biollegend.com/ordering#license](http://www.biollegend.com/ordering#license)). BioLegend products may not be transferred to third parties, resold, modified for resale, or used to manufacture commercial products, reverse engineer functionally similar materials, or to provide a service to third parties without written approval of BioLegend. By use of these products you accept the terms and conditions of all applicable Limited Use Label Licenses. Unless otherwise indicated, these products are for research use only and are not intended for human or animal diagnostic, therapeutic or commercial use.