

Product Data Sheet

FITC anti-rat Myeloid Lineage

Catalog # / Size: 205103 / 100 µg

Clone: OX-82

Isotype: Mouse IgG1, κ

Immunogen: Anemic rat bone marrow

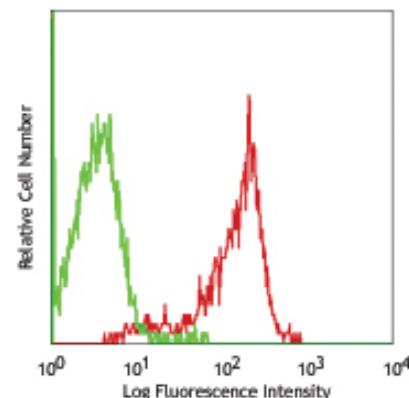
Reactivity: Rat myeloid cells

Preparation: The antibody was purified by affinity chromatography, and conjugated with FITC under optimal conditions. The solution is free of unconjugated FITC.

Formulation: Phosphate-buffered solution, pH 7.2, containing 0.09% sodium azide and 0.5% BSA (origin USA).

Concentration: 0.5 mg/ml

Storage: The antibody solution should be stored undiluted at 4°C and protected from prolonged exposure to light. **Do not freeze.**



LOU rat bone marrow cells stained with OX-82 FITC (gated on myeloid cell population)

Applications:

Applications: FC - Quality tested

Recommended Usage: Each lot of this antibody is quality control tested by immunofluorescent staining with flow cytometric analysis. For immunofluorescent staining, the suggested use of this reagent is $\leq 0.25 \mu\text{g}$ per 10^6 cells in $100 \mu\text{l}$ volume. It is recommended that the reagent be titrated for optimal performance for each application.

Application References: Crook K, et al. 1996. Dev Immunol 4:235

Description: The OX-82 reacts with a 35 kd molecules expressed on myeloid cells and stromal elements from a variety of tissues in the adult rat. This antibody is useful in isolating pluripotent stem cells from rat bone marrow and fetal liver when used in combination with other antibodies.

Antigen References: Crook K et al. 1996. Dev Immunol 4:235

Related Products:

Product
 FITC Mouse IgG1, κ Isotype Ctrl (FC)
 Cell Staining Buffer
 RBC Lysis Buffer (10X)

Clone
 MOPC-21

Application
 FC
 FC, ICC, ICFC
 FC, ICFC



For research use only. Not for diagnostic use. Not for resale. BioLegend will not be held responsible for patent infringement or other violations that may occur with the use of our products.



*These products may be covered by one or more Limited Use Label Licenses (see the BioLegend Catalog or our website, www.biollegend.com/ordering#license). BioLegend products may not be transferred to third parties, resold, modified for resale, or used to manufacture commercial products, reverse engineer functionally similar materials, or to provide a service to third parties without written approval of BioLegend. By use of these products you accept the terms and conditions of all applicable Limited Use Label Licenses. Unless otherwise indicated, these products are for research use only and are not intended for human or animal diagnostic, therapeutic or commercial use.