

# Product Data Sheet

## FITC anti-rat CD200 Receptor

**Catalog # / Size:** 204905 / 100 µg

**Clone:** OX-102

**Isotype:** Mouse IgG1, κ

**Immunogen:** Membrane fraction of thioglycollate-elicited rat peripheral cells

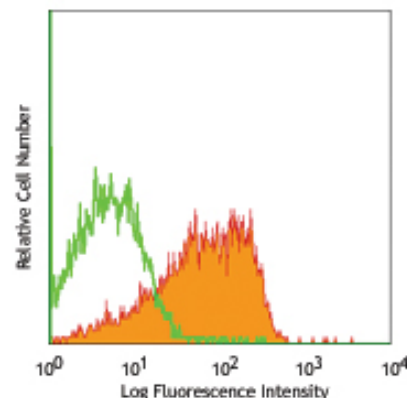
**Reactivity:** Rat

**Preparation:** The antibody was purified by affinity chromatography, and conjugated with FITC under optimal conditions. The solution is free of unconjugated FITC.

**Formulation:** Phosphate-buffered solution, pH 7.2, containing 0.09% sodium azide and 0.5% BSA (origin U.S.)

**Concentration:** 0.5 mg/ml

**Storage:** The antibody solution should be stored undiluted at 4°C and protected from prolonged exposure to light. **Do not freeze.**



LOU rat peritoneal cells stained with OX-102 FITC

## Applications:

**Applications:** FC - Quality tested

**Recommended Usage:** Each lot of this antibody is quality control tested by immunofluorescent staining with flow cytometric analysis. For immunofluorescent staining, the suggested use of this reagent is  $\leq 0.25$  µg per  $10^6$  cells in 100 µl volume. It is recommended that the reagent be titrated for optimal performance for each application.

**Application Notes:** Additional reported applications(for the relevant formats) include: immunoprecipitation, Western blotting, and immunohistochemical staining of acetone-fixed frozen sections.

**Application References:** 1. Wright GJ, *et al.* 2000. *Immunity* 13:233.  
2. Dick AD, *et al.* 2001. *Invest Ophthalmol. Vis. Sci.* 42:170.

**Description:** CD200 receptor is a 60-100 kD type I transmembrane glycoprotein, also known as OX-2R or CD200R. It is a member of the immunoglobulin superfamily that is primarily expressed on macrophages/monocytes, granulocytes, mast cells, subsets of T (memory T) and B (memory B and plasmablasts) cells. The interaction of CD200R with its ligand, CD200, plays roles in down-regulation of myeloid cells activity and inhibition of dendritic cell-induced Th1 cytokine production, as well as in modulating microglial activation.

### Related Products:

**Product**  
 FITC Mouse IgG1, κ Isotype Ctrl  
 Cell Staining Buffer  
 RBC Lysis Buffer (10X)

**Clone**  
 MOPC-21

**Application**  
 FC, ICFC  
 FC, ICC, ICFC  
 FC, ICFC



For research use only. Not for diagnostic use. Not for resale. BioLegend will not be held responsible for patent infringement or other violations that may occur with the use of our products.



\*These products may be covered by one or more Limited Use Label Licenses (see the BioLegend Catalog or our website, [www.biollegend.com/ordering#license](http://www.biollegend.com/ordering#license)). BioLegend products may not be transferred to third parties, resold, modified for resale, or used to manufacture commercial products, reverse engineer functionally similar materials, or to provide a service to third parties without written approval of BioLegend. By use of these products you accept the terms and conditions of all applicable Limited Use Label Licenses. Unless otherwise indicated, these products are for research use only and are not intended for human or animal diagnostic, therapeutic or commercial use.