

## PE anti-rat CD47

**Catalog # / Size:** 204108 / 100 µg

**Clone:** OX-101

**Isotype:** Mouse IgG1, κ

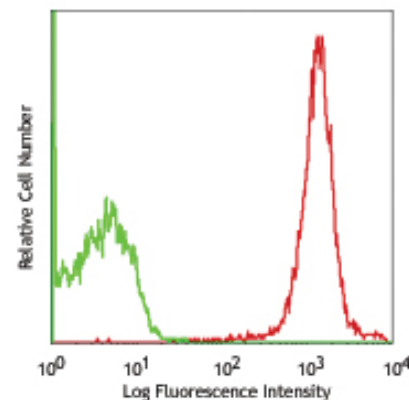
**Reactivity:** Rat CD47

**Preparation:** The antibody was purified by affinity chromatography, and conjugated with PE under optimal conditions. The solution is free of unconjugated PE and unconjugated antibody.

**Formulation:** Phosphate-buffered solution, pH 7.2, containing 0.09% sodium azide.

**Concentration:** 0.2 mg/ml

**Storage:** The antibody solution should be stored undiluted at 4°C and protected from prolonged exposure to light. **Do not freeze.**



LOU rat splenocytes stained with OX-101 PE

## Applications:

**Applications:** FC - Quality tested

**Recommended Usage:** Each lot of this antibody is quality control tested by immunofluorescent staining with flow cytometric analysis. For immunofluorescent staining, the suggested use of this reagent is ≤0.25 µg per 10<sup>6</sup> cells in 100 µl volume. It is recommended that the reagent be titrated for optimal performance for each application.

**Application References:** 1. DeVries HE, *et al.* 2002. *J. Immunol.* 168:5832.

**Description:** CD47, also known as Integrin-Associated Protein (IAP), is a membrane protein of about 50 kD with an IgV-like extracellular domain, a five membrane-spanning segment, and a short terminal cytoplasmic region. It is widely expressed on many cell types and often associated with beta 3 integrins. The significance of this molecule is recently drawing increasing attention. It has been reported that CD47 functions as a self marker. Red cells lacking CD47 were rapidly cleared from the bloodstream by splenic macrophages. By binding to SIRPα, CD47 controls hemostatic innate immune functions, such as phagocytosis and cell trafficking.

**Antigen References:** 1. Vernon-Wilson, *et al.* 2000. *Eur. J. Immunol.* 30:2130.  
2. Brown E, *et al.* 1990. *J. Cell. Biol.* 111:2785.  
3. Mawby WJ, *et al.* 1994. *Biochem. J.* 304:525.

### Related Products:

**Product**  
Cell Staining Buffer  
RBC Lysis Buffer (10X)  
PE Mouse IgG1, κ Isotype Ctrl

### Clone

MOPC-21

### Application

FC, ICC, ICFC  
FC, ICFC  
FC, ICFC



For research use only. Not for diagnostic use. Not for resale. BioLegend will not be held responsible for patent infringement or other violations that may occur with the use of our products.



\*These products may be covered by one or more Limited Use Label Licenses (see the BioLegend Catalog or our website, [www.biolegend.com/ordering#license](http://www.biolegend.com/ordering#license)). BioLegend products may not be transferred to third parties, resold, modified for resale, or used to manufacture commercial products, reverse engineer functionally similar materials, or to provide a service to third parties without written approval of BioLegend. By use of these products you accept the terms and conditions of all applicable Limited Use Label Licenses. Unless otherwise indicated, these products are for research use only and are not intended for human or animal diagnostic, therapeutic or commercial use.