

Product Data Sheet

PE anti-rat CD45RC

Catalog # / Size: 204007 / 50 µg

Clone: OX-22

Isotype: Mouse IgG1, κ

Immunogen: PHA-activated rat lymph node cells

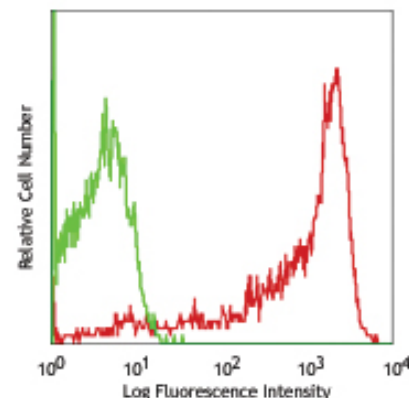
Reactivity: Rat

Preparation: The antibody was purified by affinity chromatography, and conjugated with PE under optimal conditions. The solution is free of unconjugated PE and unconjugated antibody.

Formulation: Phosphate-buffered solution, pH 7.2, containing 0.09% sodium azide and 0.5% BSA (origin U.S.)

Concentration: 0.2 mg/ml

Storage: The antibody solution should be stored undiluted at 4°C and protected from prolonged exposure to light. **Do not freeze.**



LOU rat splenocytes stained with OX-22 PE

Applications:

Applications: FC - Quality tested

Recommended Usage: Each lot of this antibody is quality control tested by immunofluorescent staining with flow cytometric analysis. For immunofluorescent staining, the suggested use of this reagent is ≤0.06 µg per million cells in 100 µl volume. It is recommended that the reagent be titrated for optimal performance for each application.

Application Notes: Additional reported applications (for the relevant formats) include: immunohistochemical staining of acetone-fixed frozen sections^{2, 3} and formalin-fixed paraffin-embedded tissue sections.

Application References:

1. Woollett GR, *et al. Eur. J. Immunol.* 15:168.
2. Spickett GP, *et al.* 1983. *J. Exp. Med.* 158:795.
3. Mason DW, *et al.* 1983. *Immunol. Rev.* 74:57.

Description: CD45RC is a 200-220 kD single chain type I membrane glycoprotein. It is an exon 5 splice variant (exon C) of the tyrosine phosphatase CD45. The CD45RC isoform is expressed on B cells, majority of CD8+ T cells and a subset of CD4+ T cells, but not on myeloid cells. CD45 and its isoforms non-covalently associate with lymphocyte phosphatase-associated phosphoprotein (LPAP) on T and B lymphocytes. CD45 has been reported to be associated with several other cell surface antigens, including CD1, CD2, CD3, and CD4. CD45 is involved in signaling lymphocytes activation.

Related Products:

Product
 PE Mouse IgG1, κ Isotype Ctrl
 Cell Staining Buffer
 RBC Lysis Buffer (10X)

Clone
 MOPC-21

Application
 FC, ICFC
 FC, ICC, ICFC
 FC, ICFC



For research use only. Not for diagnostic use. Not for resale. BioLegend will not be held responsible for patent infringement or other violations that may occur with the use of our products.



*These products may be covered by one or more Limited Use Label Licenses (see the BioLegend Catalog or our website, www.biollegend.com/ordering#license). BioLegend products may not be transferred to third parties, resold, modified for resale, or used to manufacture commercial products, reverse engineer functionally similar materials, or to provide a service to third parties without written approval of BioLegend. By use of these products you accept the terms and conditions of all applicable Limited Use Label Licenses. Unless otherwise indicated, these products are for research use only and are not intended for human or animal diagnostic, therapeutic or commercial use.