

## Biotin anti-rat CD5

**Catalog # / Size:** 203503 / 100 µg

**Clone:** OX-19

**Isotype:** Mouse IgG1, κ

**Immunogen:** Rat thymocyte lentil lectin-binding glycoproteins

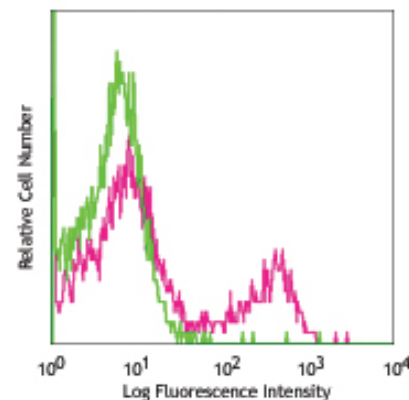
**Reactivity:** Rat

**Preparation:** The antibody was purified by affinity chromatography, and conjugated with biotin under optimal conditions. The solution is free of unconjugated biotin.

**Formulation:** Phosphate-buffered solution, pH 7.2, containing 0.09% sodium azide.

**Concentration:** 0.5 mg/ml

**Storage:** The antibody solution should be stored undiluted at 4°C. **Do not freeze.**



LOU rat splenocytes stained with OX-19 biotin, followed by SAV-PE

## Applications:

**Applications:** FC - *Quality tested*  
IHC - *Reported in the literature*

**Recommended Usage:** Each lot of this antibody is quality control tested by immunofluorescent staining with flow cytometric analysis. For immunofluorescent staining, the suggested use of this reagent is  $\leq 0.25 \mu\text{g}$  per  $10^6$  cells in  $100 \mu\text{l}$  volume. It is recommended that the reagent be titrated for optimal performance for each application.

**Application References:** 1. Dallman MJ, *et al.* 1984. *Eur. J. Immunol.* 14:260.  
2. Vermeer LA, *et al.* 1994. *Eur. J. Immunol.* 24:585.

**Description:** CD5 is a 67 kD glycoprotein, also known as Lyt-1, Ly-1 or Ly-12. It is a member of the scavenger receptor superfamily and primarily expressed on thymocytes and mature peripheral T lymphocytes, but not on NK cells, intestinal intraepithelial gamma/delta T cells. A CD5+ B cell subset (B-1) has not been characterized in that rat.

**Antigen References:** 1. Vermeer LA, *et al.* 1994. *Eur. J. Immunol.* 24:585.

**Related Products:** **Product**  
Biotin Mouse IgG1, κ *Isotype Ctrl*

**Clone**  
MOPC-21

**Application**  
FC, ICFC



For research use only. Not for diagnostic use. Not for resale. BioLegend will not be held responsible for patent infringement or other violations that may occur with the use of our products.



\*These products may be covered by one or more Limited Use Label Licenses (see the BioLegend Catalog or our website, [www.biolegend.com/ordering#license](http://www.biolegend.com/ordering#license)). BioLegend products may not be transferred to third parties, resold, modified for resale, or used to manufacture commercial products, reverse engineer functionally similar materials, or to provide a service to third parties without written approval of BioLegend. By use of these products you accept the terms and conditions of all applicable Limited Use Label Licenses. Unless otherwise indicated, these products are for research use only and are not intended for human or animal diagnostic, therapeutic or commercial use.