

PE anti-rat CD4 (domain 2)

Catalog # / Size: 203307 / 50 µg
203308 / 200 µg

Clone: OX-35

Isotype: Mouse IgG1, κ

Immunogen: MLR generated rat T helper lymphocytes

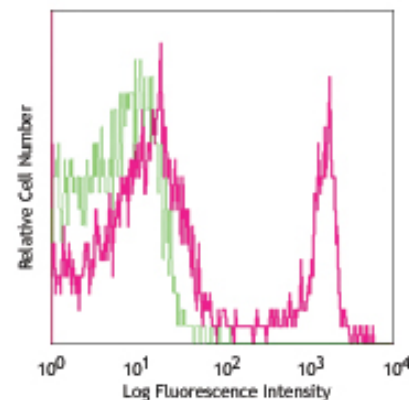
Reactivity: Rat

Preparation: The antibody was purified by affinity chromatography, and conjugated with PE under optimal conditions. The solution is free of unconjugated PE and unconjugated antibody.

Formulation: Phosphate-buffered solution, pH 7.2, containing 0.09% sodium azide and 0.5% BSA (origin U.S.)

Concentration: 0.2 mg/ml

Storage: The antibody solution should be stored undiluted at 4°C and protected from prolonged exposure to light. **Do not freeze.**



LOU rat splenocytes stained with OX-35 PE

Applications:

Applications: FC - Quality tested

Recommended Usage: Each lot of this antibody is quality control tested by immunofluorescent staining with flow cytometric analysis. For immunofluorescent staining, the suggested use of this reagent is ≤ 0.25 µg per 10⁶ cells in 100 µl volume. It is recommended that the reagent be titrated for optimal performance for each application.

Application Notes: The OX-35 antibody has been shown to bind a different CD4 epitope than the W3/25 and OX-38 antibodies. Additional reported applications (for the relevant formats) include: immunohistochemical staining².

Application References: 1. May E, *et al.* 2003. *J. Immunol.* 170:1099.
2. Hansson AS, *et al.* 1999. *J. Clin. Invest.* 104:589. (IHC)

Description: CD4, also known as T4, is a 55kD glycoprotein member of the immunoglobulin superfamily and is expressed on majority of thymocytes, macrophages, and a peripheral T cell subset (T helper cells). CD4 is a T cell co-receptor that interacts with the MHC class II molecule and is involved in T cell activation.

Antigen References: 1. May E, *et al.* 2003. *J. Immunol.* 170:1099.
2. Hansson AS, *et al.* 1999. *J Clin Invest.* 104:589

Related Products:

Product
PE Mouse IgG1, κ Isotype Ctrl
Cell Staining Buffer
RBC Lysis Buffer (10X)

Clone
MOPC-21

Application
FC, ICFC
FC, ICC, ICFC
FC, ICFC



For research use only. Not for diagnostic use. Not for resale. BioLegend will not be held responsible for patent infringement or other violations that may occur with the use of our products.



*These products may be covered by one or more Limited Use Label Licenses (see the BioLegend Catalog or our website, www.biolegend.com/ordering#license). BioLegend products may not be transferred to third parties, resold, modified for resale, or used to manufacture commercial products, reverse engineer functionally similar materials, or to provide a service to third parties without written approval of BioLegend. By use of these products you accept the terms and conditions of all applicable Limited Use Label Licenses. Unless otherwise indicated, these products are for research use only and are not intended for human or animal diagnostic, therapeutic or commercial use.