

Product Data Sheet

PE anti-rat CD152

Catalog # / Size: 203007 / 25 µg

Clone: WKH203

Isotype: Mouse IgG1, κ

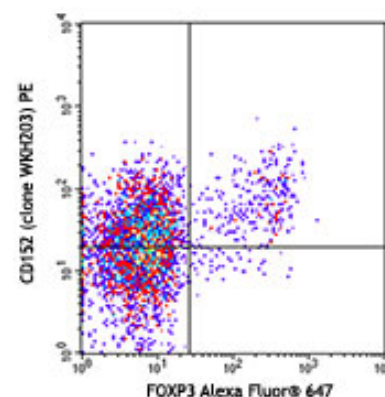
Reactivity: Rat

Preparation: The antibody was purified by affinity chromatography, and conjugated with PE under optimal conditions. The solution is free of unconjugated PE and unconjugated antibody.

Formulation: Phosphate-buffered solution, pH 7.2, containing 0.09% sodium azide.

Concentration: 0.2 mg/ml

Storage: The antibody solution should be stored undiluted at 4°C and protected from prolonged exposure to light. **Do not freeze.**



LOU rat lymph node cells were stimulated with plate-bound CD3 and CD28 for 3 days, then surface stained with CD4 PerCP. This was followed by fixation and permeabilization with BioLegend's FOXP3 Fix/Perm Buffer Set and intracellular staining with FOXP3 Alexa Fluor® 647, and CD152 (clone WKH203) PE (top) or mouse IgG1, κ PE isotype control (bottom). The data was analyzed by gating on CD4-positive cells.

Applications:

Applications: FC - Quality tested

Recommended Usage: Each lot of this antibody is quality control tested by immunofluorescent staining with flow cytometric analysis. For immunofluorescent staining, the suggested use of this reagent is ≤0.25 µg per million cells in 100 µl volume. It is recommended that the reagent be titrated for optimal performance for each application.

Application Notes: Additional reported applications (for the relevant formats) include: immunoprecipitation¹.

Application References: 1. Lin CH and Hunig T, *et al.* 2003. *Eur. J. Immunol.* 33:626. (IP)
 2. Nessi V, *et al.* 2010. *J. Immunol.* 185:5656. PubMed

Description: CD152 is a 33 kD member of the immunoglobulin superfamily also known as CTLA-4 or Ly-56. It is expressed on activated T and B lymphocytes. CD152 is similar to CD28 in amino acid sequence, structure, and genomic organization and these two receptors share common B7 family counter-receptors (B7-1, B7-2). Whereas CD28 delivers a costimulatory signal in T cell activation, CTLA-4 negatively regulates cell-mediated immune responses. CD152 is thought to play a role in the induction and maintenance of immunological tolerance, as well as the development of protective immunity and thymocyte regulation.

Antigen References: 1. Barclay A, *et al.* 1997. The Leukocyte Antigen FactsBook Academic Press.
 2. Allison JP, *et al.* 1995. *Science* 270:932.
 3. Waterhouse P, *et al.* 1995. *Science* 270:985.
 4. Linsley PS, *et al.* 1991. *J. Exp. Med.* 174:561.

Related Products:

Product

Cell Staining Buffer

PE Mouse IgG1, κ Isotype Ctrl (FC)

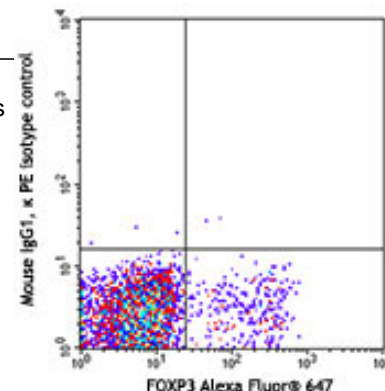
Clone

MOPC-21

Application

FC, ICC, ICFC

FC



For research use only. Not for diagnostic use. Not for resale. BioLegend will not be held responsible for patent infringement or other violations that may occur with the use of our products.



*These products may be covered by one or more Limited Use Label Licenses (see the BioLegend Catalog or our website, www.biolegend.com/ordering#license). BioLegend products may not be transferred to third parties, resold, modified for resale, or used to manufacture commercial products, reverse engineer functionally similar materials, or to provide a service to third parties without written approval of BioLegend. By use of these products you accept the terms and conditions of all applicable Limited Use Label Licenses. Unless otherwise indicated, these products are for research use only and are not intended for human or animal diagnostic, therapeutic or commercial use.