

FITC anti-rat CD62L

Catalog # / Size: 202905 / 100 µg

Clone: OX-85

Isotype: Mouse IgG1, κ

Immunogen: Rat purified CD62L-CD4

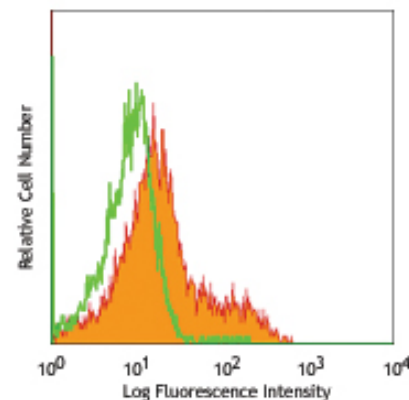
Reactivity: Rat

Preparation: The antibody was purified by affinity chromatography, and conjugated with FITC under optimal conditions. The solution is free of unconjugated FITC.

Formulation: Phosphate-buffered solution, pH 7.2, containing 0.09% sodium azide.

Concentration: 0.5 mg/ml

Storage: The antibody solution should be stored undiluted at 4°C and protected from prolonged exposure to light. **Do not freeze.**



LOU rat splenocytes stained with OX-85 FITC

Applications:

Applications: FC - *Quality tested*

Recommended Usage: Each lot of this antibody is quality control tested by immunofluorescent staining with flow cytometric analysis. For immunofluorescent staining, the suggested use of this reagent is ≤1.0 µg per million cells in 100 µl volume. It is recommended that the reagent be titrated for optimal performance for each application.

Application References: 1. Vosine C. 2002 *J. Immunol.* 169:2284.

Description: CD62L is a 74-95 kD glycoprotein, also known as L-selectin, LECAM-1, Ly-22 and MEL-14. It is a member of the selectin family and is expressed on the majority of B and naïve T cells, a subset of memory T cells, granulocytes, subsets of thymocytes and NK cells. CD62L is important in lymphocyte homing to high endothelial venules in peripheral lymph nodes and leukocyte "rolling" on activated endothelium. CD62L also contributes to neutrophil emigration at inflammatory sites. CD62L is rapidly shed from lymphocytes and neutrophils upon activation and the expression levels of CD62L (in conjunction with other markers) have been used to distinguish naïve, effector and memory T cells. CD62L has been reported to interact with α -glycans presented on CD34, GlyCAM-1, and MadCAM-1.

Related Products:	Product	Clone	Application
	Cell Staining Buffer		FC, ICC, ICFC
	RBC Lysis Buffer (10X)		FC, ICFC
	FITC Mouse IgG1, κ Isotype Ctrl (FC)	MOPC-21	FC



For research use only. Not for diagnostic use. Not for resale. BioLegend will not be held responsible for patent infringement or other violations that may occur with the use of our products.



*These products may be covered by one or more Limited Use Label Licenses (see the BioLegend Catalog or our website, www.biolegend.com/ordering#license). BioLegend products may not be transferred to third parties, resold, modified for resale, or used to manufacture commercial products, reverse engineer functionally similar materials, or to provide a service to third parties without written approval of BioLegend. By use of these products you accept the terms and conditions of all applicable Limited Use Label Licenses. Unless otherwise indicated, these products are for research use only and are not intended for human or animal diagnostic, therapeutic or commercial use.