

# Product Data Sheet

## PE anti-rat CD45

**Catalog # / Size:** 202207 / 50 µg

**Clone:** OX-1

**Isotype:** Mouse IgG1, κ

**Immunogen:** Enriched glycoprotein fraction from Wistar rat thymocytes

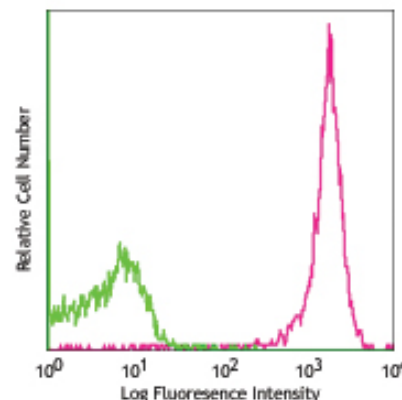
**Reactivity:** Rat

**Preparation:** The antibody was purified by affinity chromatography, and conjugated with PE under optimal conditions. The solution is free of unconjugated PE and unconjugated antibody.

**Formulation:** Phosphate-buffered solution, pH 7.2, containing 0.09% sodium azide and 0.5% BSA (origin U.S.)

**Concentration:** 0.2 mg/ml

**Storage:** The antibody solution should be stored undiluted at 4°C and protected from prolonged exposure to light. **Do not freeze.**



LOU rat splenocytes stained with OX-1 PE

## Applications:

**Applications:** FC - Quality tested

**Recommended Usage:** Each lot of this antibody is quality control tested by immunofluorescent staining with flow cytometric analysis. For immunofluorescent staining, the suggested use of this reagent is ≤0.25 µg per million cells in 100 µl volume. It is recommended that the reagent be titrated for optimal performance for each application.

**Application Notes:** Additional reported applications (for the relevant formats) include: immunoprecipitation<sup>1</sup>, immunofluorescence microscopy (acetone fixed, ammonium-thiocyanate separated epidermal sheets)<sup>2</sup>, immunohistochemistry of acetone<sup>3</sup>-, isopentane<sup>4</sup>, PLP<sup>5</sup>-, and n-hexane<sup>6</sup> fixed frozen sections and zinc-fixed paraffin-embedded sections, and partial inhibition of NK cell lysis of syngeneic tumor cell lines<sup>1</sup>.

**Application References:**

1. Giezeman-Smits KM, *et al.* 1999. *J. Immunol.* 163:71. (IP)
2. Elbe A, *et al.* 1994. *J. Invest. Dermatol.* 102:74. (IF)
3. Kouwenhoven E, *et al.* 2001. *Kidney Int.* 59:1142. (IHC)
4. Martin A, *et al.* 1995 *Clin. Exp. Immunol.* 22:283. (IHC)
5. Sayegh MH, *et al.* 1995 *J. Exp. Med.* 181:186. (IHC)
6. Morioka Y, *et al.* 2000. *Kidney Int.* 60:2192. (IHC)

**Description:** CD45 is a 180-220 kD protein also known as leukocyte common antigen (LCA). It is a protein tyrosine phosphatase with multiple isoforms differing as a result of alternative splicing of the extracellular domain and glycosylation. CD45 is expressed on all hematopoietic cells except erythrocytes and platelets; isoform expression depends on cell type, activation state, and cell maturation. CD45 functions in signal transduction through T and B cell antigen receptors. CD45 has been shown to interact with various proteins including galectin-1, CD2, CD3, and CD4. The OX-1 antibody has been shown to partially inhibit NK cell-mediated lysis of syngeneic tumor cells *in vitro*.

**Antigen References:**

1. Sunderland CA, *et al.* 1979. *Eur. J. Immunol.* 9:155.
2. Woollett GR, *et al.* 1985. *Eur. J. Immunol.* 15:168.

### Related Products:

**Product**  
 PE Mouse IgG1, κ Isotype Ctrl  
 Cell Staining Buffer

**Clone**  
 MOPC-21

**Application**  
 FC, ICFC  
 FC, ICC, ICFC



For research use only. Not for diagnostic use. Not for resale. BioLegend will not be held responsible for patent infringement or other violations that may occur with the use of our products.



\*These products may be covered by one or more Limited Use Label Licenses (see the BioLegend Catalog or our website, [www.biollegend.com/ordering#license](http://www.biollegend.com/ordering#license)). BioLegend products may not be transferred to third parties, resold, modified for resale, or used to manufacture commercial products, reverse engineer functionally similar materials, or to provide a service to third parties without written approval of BioLegend. By use of these products you accept the terms and conditions of all applicable Limited Use Label Licenses. Unless otherwise indicated, these products are for research use only and are not intended for human or animal diagnostic, therapeutic or commercial use.