

Biotin anti-rat CD11a

Catalog # / Size: 201903 / 100 µg

Clone: WT.1

Isotype: Mouse IgG2a, κ

Immunogen: PHA-stimulated rat splenocytes and rat thymic lymphoma FTL-43

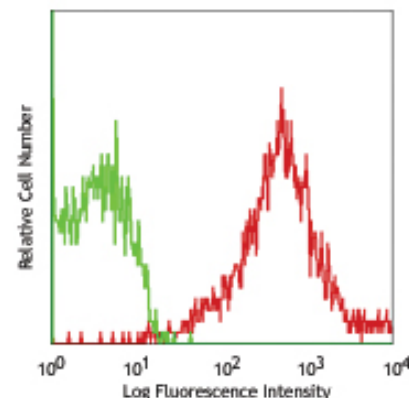
Reactivity: Rat

Preparation: The antibody was purified by affinity chromatography, and conjugated with biotin under optimal conditions. The solution is free of unconjugated biotin.

Formulation: Phosphate-buffered solution, pH 7.2, containing 0.09% sodium azide and 0.5% BSA (Origin USA)

Concentration: 0.5 mg/ml

Storage: The antibody solution should be stored undiluted at 4°C. **Do not freeze.**



LOU rat splenocytes stained with biotinylated WT.1, followed by Sav-PE

Applications:

Applications: FC - Quality tested

Recommended Usage: Each lot of this antibody is quality control tested by immunofluorescent staining with flow cytometric analysis. For immunofluorescent staining, the suggested use of this reagent is ≤0.25 µg per million cells in 100 µl volume. It is recommended that the reagent be titrated for optimal performance for each application.

Application Notes: The WT.1 antibody recognizes both activated and unactivated LFA-1 and inhibits the binding of LFA-1 to ICAM-1. The WT.1 antibody has been shown to inhibit the mixed lymphocyte reaction, leukocyte infiltration, and graft rejection. Additional reported applications (for the relevant formats) include: immunohistochemistry of acetone-fixed frozen sections^{1,2}, immunoprecipitation³, *in vivo* and *in vitro* blocking of cellular adhesion³⁻⁶.

Application References:

1. Andrews FJ, *et al.* 1997. *Dig. Dis. Sci.* 42:326. (IHC)
2. Springer TA. 1994. *Cell* 76:301. (IHC)
3. Tamatani T, *et al.* 1991. *Eur. J. Immunol.* 21:627. (IP Block)
4. Devine L, *et al.* 1996. *Immunol.* 88:456. (Block)
5. Ohta Y, *et al.* 1998. *Transplantation* 65:1094. (Block)
6. Watanabe T, *et al.* 1997. *Am. J. Pathol.* 150:971. (Block)

Description: CD11a is a 160-170 kD glycoprotein also known as α_L integrin, or LFA-1 α chain. It is a member of the integrin family and forms a heterodimer with β₂ integrin (CD18). The LFA-1 (CD11a/CD18) is broadly expressed on leukocytes and mediates intercellular adhesion and cellular activation. CD54 (ICAM-1), CD102 (ICAM-2), and CD50 (ICAM-3) are the ligands of LFA-1.

Antigen References:

1. Tamatani T, *et al.* 1991. *Eur. J. Immunol.* 21:627.
2. Tamatani T, *et al.* 1991. *Eur. J. Immunol.* 21:855.

Related Products:

Product
Biotin Mouse IgG2a, κ Isotype Ctrl
APC Streptavidin
HRP Streptavidin
PE Streptavidin
PE/Cy5 Streptavidin
Cell Staining Buffer

Clone
MOPC-173

Application
FC, ICFC
FC, ICFC
ELISA, ELISPOT, IHC, WB
FC, ICFC
FC, ICFC
FC, ICC, ICFC



For research use only. Not for diagnostic use. Not for resale. BioLegend will not be held responsible for patent infringement or other violations that may occur with the use of our products.



*These products may be covered by one or more Limited Use Label Licenses (see the BioLegend Catalog or our website, www.biolegend.com/ordering#license). BioLegend products may not be transferred to third parties, resold, modified for resale, or used to manufacture commercial products, reverse engineer functionally similar materials, or to provide a service to third parties without written approval of BioLegend. By use of these products you accept the terms and conditions of all applicable Limited Use Label Licenses. Unless otherwise indicated, these products are for research use only and are not intended for human or animal diagnostic, therapeutic or commercial use.