

APC anti-rat CD11b/c

Catalog # / Size: 201809 / 50 µg

Clone: OX-42

Isotype: Mouse IgG2a, κ

Immunogen: Rat peritoneal macrophages

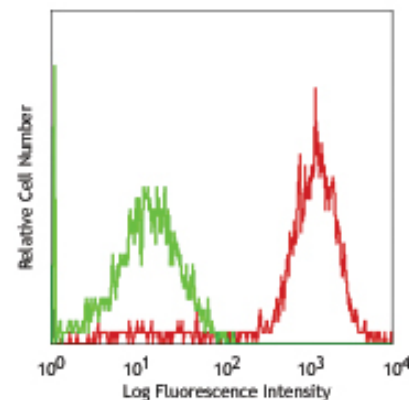
Reactivity: Rat

Preparation: The antibody was purified by affinity chromatography, and conjugated with APC under optimal conditions. The solution is free of unconjugated APC and unconjugated antibody.

Formulation: Phosphate-buffered solution, pH 7.2, containing 0.09% sodium azide and 0.5% BSA (origin USA).

Concentration: 0.2 mg/ml

Storage: The antibody solution should be stored undiluted at 4°C and protected from prolonged exposure to light. **Do not freeze.**



LOU rat bone marrow cells stained with OX-42 APC (gated on myeloid cell population)

Applications:

Applications: FC - Quality tested

Recommended Usage: Each lot of this antibody is quality control tested by immunofluorescent staining with flow cytometric analysis. For immunofluorescent staining, the suggested use of this reagent is ≤0.25 µg per million cells in 100 µl volume. It is recommended that the reagent be titrated for optimal performance for each application.

Application Notes: Additional reported applications (for the relevant formats) include: immunohistochemistry of acetone-fixed frozen sections^{1,2}, immunoprecipitation³, *in vivo* and *in vitro* blocking of C3bi binding^{3,4}.

Application References:

- Whiteland JL, *et al.* 1995. *J. Histochem. Cytochem.* 43:313. (IHC)
- Milligan CE, *et al.* 1991. *J. Comp. Neurol.* 314:125. (IHC)
- Robinson AP, *et al.* 1986. *Immunology* 57:239. (Block)
- Issekutz SE, *et al.* 1992. *Immunology* 76:655. (Block)
- Muehlbauer SM, *et al.* Am. J Pathol. 177:735. (FC) PubMed
- Furuhashi K, *et al.* 2013. *J Am Soc Nephrol.* PubMed.

Description: The OX-42 antibody reacts with the CR3 complement (C3bi) receptor expressed on monocytes, granulocytes, macrophages, dendritic cells, NK cells, and a subset of lymphocytes. This antibody appears to recognize a common epitope shared between CD11b and CD11c (integrin α_M and α_X chains). The OX-42 antibody precipitates three polypeptides with apparent molecular weights of 160, 103, and 95 kD, respectively. This antibody has been shown to block the formation of complement-mediated rosettes and leukocyte migration.

Antigen References:

- Robinson AP, *et al.* 1986. *Immunology* 57:239.
- Barcaly AN. 1981 *Immunology* 42:593.

Related Products: **Product**

APC Mouse IgG2a, κ Isotype Ctrl
Cell Staining Buffer

Clone

MOPC-173

Application

FC, ICFC
FC, ICC, ICFC



For research use only. Not for diagnostic use. Not for resale. BioLegend will not be held responsible for patent infringement or other violations that may occur with the use of our products.



*These products may be covered by one or more Limited Use Label Licenses (see the BioLegend Catalog or our website, www.biolegend.com/ordering#license). BioLegend products may not be transferred to third parties, resold, modified for resale, or used to manufacture commercial products, reverse engineer functionally similar materials, or to provide a service to third parties without written approval of BioLegend. By use of these products you accept the terms and conditions of all applicable Limited Use Label Licenses. Unless otherwise indicated, these products are for research use only and are not intended for human or animal diagnostic, therapeutic or commercial use.