

PE anti-rat CD4

Catalog # / Size: 201507 / 50 µg

Clone: W3/25

Isotype: Mouse IgG1, κ

Immunogen: Rat thymocyte membrane glycoproteins

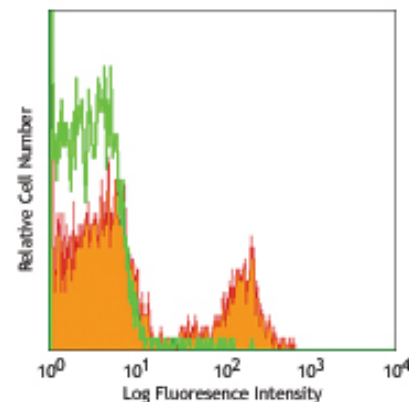
Reactivity: Rat

Preparation: The antibody was purified by affinity chromatography, and conjugated with PE under optimal conditions. The solution is free of unconjugated PE and unconjugated antibody.

Formulation: Phosphate-buffered solution, pH 7.2, containing 0.09% sodium azide and 0.5% BSA (origin USA).

Concentration: 0.2 mg/ml

Storage: The antibody solution should be stored undiluted at 4°C and protected from prolonged exposure to light. **Do not freeze.**



LOU rat splenocytes stained with W3/25 PE

Applications:

Applications: FC - Quality tested

Recommended Usage: Each lot of this antibody is quality control tested by immunofluorescent staining with flow cytometric analysis. For immunofluorescent staining, the suggested use of this reagent is ≤ 0.25 µg per 10⁶ cells in 100 µl volume. It is recommended that the reagent be titrated for optimal performance for each application.

Application Notes: The W3/25 antibody has been shown to inhibit IL-2 production by T helper cells and to prevent autoimmune T cell transfer in an MBP induced EAE model *in vivo*. Additional reported applications (for the relevant formats) include: immunohistochemistry of acetone-fixed frozen sections^{1,2}, inhibition of IL-2 production³, inhibition of MBP-induced T cell activation in EAE transfer model³.

Application References:

- Whiteland JL, *et al.* 1995. *J. Histochem. Cytochem.* 43:313. (IHC)
- Shioji K, *et al.* 2001. *Circulation Res.* 89:540. (IHC)
- Mannie MD, *et al.* 1993. *J. Immunol.* 151:7293.
- Kurtz CC, *et al.* 2007. *Dev. Comp. Immunol.* 31:415. PubMed

Description: CD4 is a 55 kD glycoprotein also known as T4. Rat CD4 is a member of the immunoglobulin superfamily and is expressed on majority of thymocytes, macrophages, and a peripheral T cell subset (T helper cells). CD4 is a T cell co-receptor that interacts with the MHC class II molecule and is involved in T cell activation.

Antigen References:

- Brideau RJ, *et al.* 1980. *Eur. J. Immunol.* 10:609.
- Clark SJ, *et al.* 187. *P. Natl. Acad. Sci. USA* 84:1649.

Related Products:

Product	Clone	Application
PE Mouse IgG1, κ Isotype Ctrl	MOPC-21	FC, ICFC
Cell Staining Buffer		FC, ICC, ICFC



For research use only. Not for diagnostic use. Not for resale. BioLegend will not be held responsible for patent infringement or other violations that may occur with the use of our products.



*These products may be covered by one or more Limited Use Label Licenses (see the BioLegend Catalog or our website, www.biolegend.com/ordering#license). BioLegend products may not be transferred to third parties, resold, modified for resale, or used to manufacture commercial products, reverse engineer functionally similar materials, or to provide a service to third parties without written approval of BioLegend. By use of these products you accept the terms and conditions of all applicable Limited Use Label Licenses. Unless otherwise indicated, these products are for research use only and are not intended for human or animal diagnostic, therapeutic or commercial use.