

PE anti-rat CD86

Catalog # / Size: 200307 / 50 µg
200308 / 200 µg

Clone: 24F

Isotype: Mouse IgG1, κ

Immunogen: HTLV-1-transformed Lewis-S1 rat T cell line

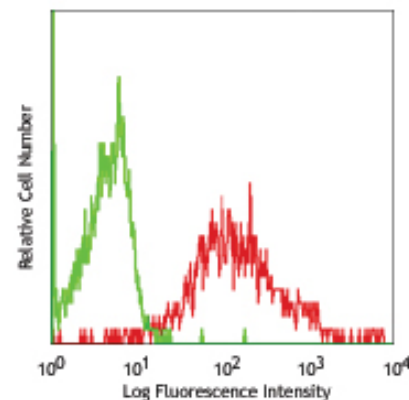
Reactivity: Rat

Preparation: The antibody was purified by affinity chromatography, and conjugated with PE under optimal conditions. The solution is free of unconjugated PE and unconjugated antibody.

Formulation: Phosphate-buffered solution, pH 7.2, containing 0.09% sodium azide.

Concentration: 0.2 mg/ml

Storage: The antibody solution should be stored undiluted at 4°C and protected from prolonged exposure to light. **Do not freeze.**



LPS-stimulated (3 days) LOU rat splenocytes stained with 24F PE

Applications:

Applications: FC - Quality tested

Recommended Usage: Each lot of this antibody is quality control tested by immunofluorescent staining with flow cytometric analysis. For immunofluorescent staining, the suggested use of this reagent is ≤ 0.25 µg per 10⁶ cells in 100 µl volume. It is recommended that the reagent be titrated for optimal performance for each application.

Application Notes: Additional reported applications (for the relevant formats) include: immunoprecipitation¹⁻³, blocking of costimulation of T cells¹⁻³, and immunohistochemical staining of acetone-fixed frozen sections³. The LEAF™ purified antibody (Endotoxin <0.1 EU/µg, Azide-Free, 0.2 µm filtered) is recommended for functional assays (Cat. No. 200310).

Application References:

1. Maeda, K., *et al.* 1997. *Int. Immunol.* 9:993. (IP, Block)
2. Bluestone, J.A. 1995. *Immunity* 2:555. (IP, Block)
3. Damoiseaux, J.G., *et al.* 1998. *J. Leuk. Biol.* 64:803. (IP, Block, IHC)
4. Zonneveld-Huijssoon E, *et al.* 2012. *Ann Rheum Dis.* PubMed.
5. Treacy O, *et al.* 2012. *PLoS One.* 7:e42662. PubMed.
6. Zonneveld-Huijssoon E, *et al.* 2012. *Ann Rheum Dis.* 71:1706. PubMed.

Description: CD86 is an 80 kD member of the immunoglobulin superfamily also known as B70 or B7-2. It is expressed on antigen presenting cells and activated T and B cells. CD86 is a ligand for CD28 and CD152 (CTLA-4). It is one of the accessory molecules that plays an important role in T cell-APC cell costimulatory interactions. The 24F antibody can block the co-stimulatory activity of CD86.

Antigen References:

1. Barclay, A.N. *et al.* 1997. *The Leukocyte Antigen FactsBook.* Academic Press.
2. Hathcock, K.S., *et al.* 1993. *Science* 262:905.
3. Freeman, G.J., *et al.* 1993. *Science* 262:907.
4. Carreno, B.M., *et al.* 2002. *Ann. Rev. Immunol.* 20:29.

| Related Products: | Product | Clone | Application |
|-------------------|-------------------------------|---------|---------------|
| | PE anti-rat CD80 | 3H5 | FC |
| | PE Mouse IgG1, κ Isotype Ctrl | MOPC-21 | FC, ICFC |
| | Cell Staining Buffer | | FC, ICC, ICFC |
| | PE anti-rat CD28 | JJ319 | FC |



For research use only. Not for diagnostic use. Not for resale. BioLegend will not be held responsible for patent infringement or other violations that may occur with the use of our products.



*These products may be covered by one or more Limited Use Label Licenses (see the BioLegend Catalog or our website, www.biolegend.com/ordering#license). BioLegend products may not be transferred to third parties, resold, modified for resale, or used to manufacture commercial products, reverse engineer functionally similar materials, or to provide a service to third parties without written approval of BioLegend. By use of these products you accept the terms and conditions of all applicable Limited Use Label Licenses. Unless otherwise indicated, these products are for research use only and are not intended for human or animal diagnostic, therapeutic or commercial use.