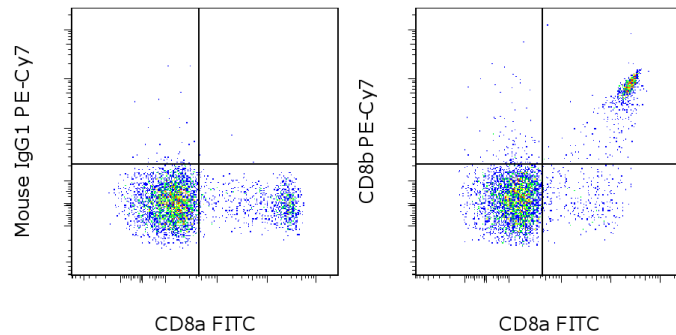


## Anti-Human/Non-Human Primate CD8b PE-Cyanine7

Catalog Number: 25-5273

RUO: For Research Use Only. Not for use in diagnostic procedures.



Staining of normal human peripheral blood cells with Anti-Human CD8a FITC (cat. 11-0087) and Mouse IgG1 K Isotype Control PE-Cyanine7 (cat. 25-4714) (left) or Anti-Human/Non-Human Primate CD8b PE-Cyanine7 (right). Cells in the lymphocyte gate were used for analysis.

### Product Information

**Contents:** Anti-Human/Non-Human Primate CD8b PE-Cyanine7

**REF** **Catalog Number:** 25-5273

**Clone:** SIDI8BEE

**Concentration:** 5 uL (0.25 ug)/test

**Host/Isotype:** Mouse IgG1, kappa

**Formulation:** aqueous buffer, 0.09% sodium azide, may contain carrier protein/stabilizer

**Temperature Limitation:** Store at 2-8°C. Do not freeze. Light-sensitive material. This tandem dye is sensitive to photo-induced oxidation. Protect this vial from light during storage, handling & experimental procedures.

**Batch Code:** Refer to vial

**Use By:** Refer to vial

**Contains sodium azide**

### Description

The SIDI8BEE monoclonal antibody reacts with human and rhesus macaque CD8 beta. The CD8b chain associates with the CD8a chain to form the CD8ab heterodimer expressed on the surface of a majority of thymocytes, and on peripheral cytotoxic alphabeta TCR T cells. The CD8 receptor complex binds to MHC class I and plays a role in T cell development and activation of mature T cells. Long been thought to exist either as a heterodimer of the alpha and beta chain or as a homodimer of alpha chains, beta chains have now been shown to homodimerize as well. SIDI8BEE can detect the CD8 beta chain in both the CD8ab heterodimer and the CD8bb homodimer.

SIDI8BEE is cross-reactive to human and rhesus macaque CD8b. Other non-human primate species have not been tested.

### Applications Reported

This SIDI8BEE antibody has been reported for use in flow cytometric analysis.

### Applications Tested

This SIDI8BEE antibody has been pre-titrated and tested by flow cytometric analysis of normal human peripheral blood cells. This can be used at 5 µL (0.25 µg) per test. A test is defined as the amount (µg) of antibody that will stain a cell sample in a final volume of 100 µL. Cell number should be determined empirically but can range from 10<sup>5</sup> to 10<sup>8</sup> cells/test.

**Light sensitivity:** This tandem dye is sensitive photo-induced oxidation. Please protect this vial and stained samples from light.

**Fixation:** Samples can be stored in IC Fixation Buffer (cat. 00-8222) (100 uL cell sample + 100 uL IC Fixation Buffer) or 1-step Fix/Lyse Solution (cat. 00-5333) for up to 3 days in the dark at 4°C with minimal impact on brightness and FRET efficiency/compensation. Some generalizations regarding fluorophore performance

Not for further distribution without written consent.

Copyright © 2000-2012 eBioscience, Inc.

Tel: 888.999.1371 or 858.642.2058 • Fax: 858.642.2046 • www.ebioscience.com •  
info@ebioscience.com

---

## Anti-Human/Non-Human Primate CD8b PE-Cyanine7

**Catalog Number:** 25-5273

**RUO: For Research Use Only. Not for use in diagnostic procedures.**

---

**after fixation can be made, but clone specific performance should be determined empirically.**

### References

Thakral D, Dobbins J, Devine L, Kavathas PB. Differential expression of the human CD8beta splice variants and regulation of the M-2 isoform by ubiquitination. J Immunol. 2008 Jun 1;180(11):7431-42.

Devine L, Thakral D, Nag S, Dobbins J, Hodsdon ME, Kavathas PB. Mapping the binding site on CD8 beta for MHC class I reveals mutants with enhanced binding. J Immunol. 2006 Sep 15;177(6):3930-8.

Devine L, Kieffer LJ, Aitken V, Kavathas PB. Human CD8 beta, but not mouse CD8 beta, can be expressed in the absence of CD8 alpha as a beta beta homodimer. J Immunol. 2000 Jan 15;164(2):833-8.

### Related Products

00-4222 Flow Cytometry Staining Buffer

11-0087 Anti-Human CD8a FITC (SK1 (SK-1))

### Legal

FOR NON-COMMERCIAL RESEARCH USE ONLY. NOT FOR THERAPEUTIC OR IN VIVO APPLICATIONS. OTHER USE NEEDS LICENSE FROM GE HEALTHCARE BIO-SCIENCES CORP. UNDER U.S. PATENT FOR NON-COMMERCIAL RESEARCH USE ONLY. NOT FOR THERAPEUTIC OR IN VIVO APPLICATIONS. OTHER USE NEEDS LICENSE FROM GE HEALTHCARE BIO-SCIENCES CORP. UNDER U.S. PATENT # 5,268,486, 5,569,587 AND 5,627,027 AND FOREIGN EQUIVALENTS AND PENDING APPLICATIONS. THIS MATERIAL IS SUBJECT TO PROPRIETARY RIGHTS OF GE HEALTHCARE BIO-SCIENCES CORP. AND CARNEGIE MELLON UNIVERSITY AND MADE AND SOLD UNDER LICENSE FROM GE HEALTHCARE BIO-SCIENCES CORP. THIS PRODUCT IS LICENSED FOR SALE ONLY FOR RESEARCH. IT IS NOT LICENSED FOR ANY OTHER USE. THERE IS NO IMPLIED LICENSE HEREUNDER FOR ANY COMMERCIAL USE. COMMERCIAL USE shall include: 1. sale, lease, license or other transfer of the material or any material derived or produced from it; 2. sale, lease, license or other grant of rights to use this Material or any material derived or produced from it; 3. use of this material to perform services for a fee for third parties. IF YOU REQUIRE A COMMERCIAL LICENSE TO USE THIS MATERIAL AND DO NOT HAVE ONE, RETURN THIS MATERIAL, UNOPENED TO EBIOSCIENCE, INC. 10255 SCIENCE CENTER DRIVE, SAN DIEGO, CALIFORNIA 92121 USA AND ANY MONEY PAID FOR THE MATERIAL WILL BE REFUNDED.

---

Not for further distribution without written consent.

Copyright © 2000-2012 eBioscience, Inc.

Tel: 888.999.1371 or 858.642.2058 • Fax: 858.642.2046 • [www.ebioscience.com](http://www.ebioscience.com) •  
[info@ebioscience.com](mailto:info@ebioscience.com)