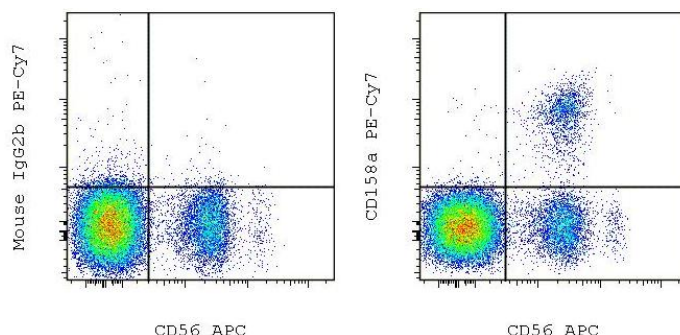


Anti-Human CD158a PE-Cyanine7

Catalog Number: 25-1589

Also known as: KIR2DL1/S1, KIR

RUO: For Research Use Only. Not for use in diagnostic procedures.



Staining of normal human peripheral blood cells with Anti-Human CD56 (NCAM) APC (cat. 17-0567) and Mouse IgG2b K Isotype Control PE-Cyanine7 (cat. 25-4732) (left) or Anti-Human CD158a PE-Cyanine7 (right). Cells in the lymphocyte gate were used for analysis.

Product Information



Contents: Anti-Human CD158a PE-Cyanine7

Catalog Number: 25-1589

Clone: HP-MA4

Concentration: 5 uL (0.25 ug)/test

Host/Isotype: Mouse IgG2b



Temperature Limitation: Store at 2-8°C. Do not freeze. Light-sensitive material. This tandem dye is sensitive to photo-induced oxidation. Protect this vial from light during storage, handling & experimental procedures.



Batch Code: Refer to vial



Use By: Refer to vial

Contains sodium azide

Description

The monoclonal antibody HP-MA4 recognizes the 58 kDa protein CD158a also known as KIR2DL1/S1. CD158a is a member of the family of killer cell immunoglobulin-like receptors (KIRs) comprising transmembrane glycoproteins expressed on NK cells and a subset of T cells. Many groups of KIRs exist including KIR2DL1-2, KIR3DS1, KIR2DL1-5, and KIR2DS1-5. The isoforms have either a short (S) or long (L) cytoplasmic domain which transduce either an activating or inhibitory signal, respectively. The ligand for CD158a is HLA-C. The HP-MA4 antibody has been shown to not cross react with other KIRs, despite the conservation of sequence.

Applications Reported

This HP-MA4 antibody has been reported for use in flow cytometric analysis.

Applications Tested

This HP-MA4 antibody has been pre-titrated and tested by flow cytometric analysis of normal human peripheral blood cells. This can be used at 5 µL (0.25 µg) per test. A test is defined as the amount (µg) of antibody that will stain a cell sample in a final volume of 100 µL. Cell number should be determined empirically but can range from 10⁵ to 10⁸ cells/test.

Light sensitivity: This tandem dye is sensitive photo-induced oxidation. Please protect this vial and stained samples from light.

Fixation: Samples can be stored in IC Fixation Buffer (cat. 00-8222) (100 uL cell sample + 100 uL IC Fixation Buffer) or 1-step Fix/Lyse Solution (cat. 00-5333) for up to 3 days in the dark at 4°C with minimal impact on brightness and FRET efficiency/compensation. Some generalizations regarding fluorophore performance after fixation can be made, but clone specific performance should be determined empirically.

References

Foley B, De Santis D, Lathbury L, Christiansen F, Witt C. KIR2DS1-mediated activation overrides NKG2A-mediated

Not for further distribution without written consent.

Copyright © 2000-2012 eBioscience, Inc.

Tel: 888.999.1371 or 858.642.2058 • Fax: 858.642.2046 • www.ebioscience.com • info@ebioscience.com

Anti-Human CD158a PE-Cyanine7

Catalog Number: 25-1589

Also known as: KIR2DL1/S1, KIR

RUO: For Research Use Only. Not for use in diagnostic procedures.

inhibition in HLA-C C2-negative individuals. Int Immunol. 2008 Apr;20(4):555-63.

M. De Miguel, M. Lopez-Botet, Characterization of monoclonal antibodies specific for receptors of the KIR family. Immunologia 21: 2002; 187-193 (HP-MA4, FC, IP)

Related Products

17-0567 Anti-Human CD56 (NCAM) APC (CMSSB)

25-4732 Mouse IgG2b K Isotype Control PE-Cyanine7

Legal

FOR NON-COMMERCIAL RESEARCH USE ONLY. NOT FOR THERAPEUTIC OR IN VIVO APPLICATIONS. OTHER USE NEEDS LICENSE FROM GE HEALTHCARE BIO-SCIENCES CORP. UNDER U.S. PATENT FOR NON-COMMERCIAL RESEARCH USE ONLY. NOT FOR THERAPEUTIC OR IN VIVO APPLICATIONS. OTHER USE NEEDS LICENSE FROM GE HEALTHCARE BIO-SCIENCES CORP. UNDER U.S. PATENT # 5,268,486, 5,569,587 AND 5,627,027 AND FOREIGN EQUIVALENTS AND PENDING APPLICATIONS. THIS MATERIAL IS SUBJECT TO PROPRIETARY RIGHTS OF GE HEALTHCARE BIO-SCIENCES CORP. AND CARNEGIE MELLON UNIVERSITY AND MADE AND SOLD UNDER LICENSE FROM GE HEALTHCARE BIO-SCIENCES CORP. THIS PRODUCT IS LICENSED FOR SALE ONLY FOR RESEARCH. IT IS NOT LICENSED FOR ANY OTHER USE. THERE IS NO IMPLIED LICENSE HEREUNDER FOR ANY COMMERCIAL USE. COMMERCIAL USE shall include: 1. sale, lease, license or other transfer of the material or any material derived or produced from it; 2. sale, lease, license or other grant of rights to use this Material or any material derived or produced from it; 3. use of this material to perform services for a fee for third parties. IF YOU REQUIRE A COMMERCIAL LICENSE TO USE THIS MATERIAL AND DO NOT HAVE ONE, RETURN THIS MATERIAL, UNOPENED TO EBIOSCIENCE, INC. 10255 SCIENCE CENTER DRIVE, SAN DIEGO, CALIFORNIA 92121 USA AND ANY MONEY PAID FOR THE MATERIAL WILL BE REFUNDED.

Not for further distribution without written consent.

Copyright © 2000-2012 eBioscience, Inc.

Tel: 888.999.1371 or 858.642.2058 • Fax: 858.642.2046 • www.ebioscience.com •
info@ebioscience.com