

## PE anti-mouse TCR V $\beta$ 12

**Catalog # / Size:** 139703 / 25  $\mu$ g  
139704 / 100  $\mu$ g

**Clone:** MR11-1

**Isotype:** Mouse IgG1,  $\kappa$

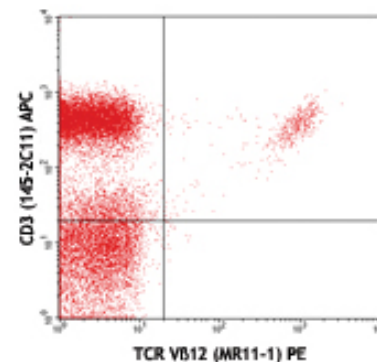
**Reactivity:** Mouse

**Preparation:** The antibody was purified by affinity chromatography and conjugated with PE under optimal conditions. The solution is free of unconjugated PE and unconjugated antibody.

**Formulation:** Phosphate-buffered solution, pH 7.2, containing 0.09% sodium azide.

**Concentration:** 0.2 mg/ml

**Storage:** The antibody solution should be stored undiluted at 4°C and protected from prolonged exposure to light. **Do not freeze.**



*C57BL/6 mouse lymph node stained with TCR V $\beta$ 12 (MR11-1) PE and CD3 (145-2C11) APC*

## Applications:

**Applications:** FC - *Quality tested*

**Recommended Usage:** Each lot of this antibody is quality control tested by immunofluorescent staining with flow cytometric analysis. For immunofluorescent staining, the suggested use of this reagent is  $\leq 0.06$   $\mu$ g per million cells in 100  $\mu$ l volume. It is recommended that the reagent be titrated for optimal performance for each application.

**Application References:** 1. Joshi P, *et al.* 2006. *J Leukoc Biol.* 80:1345. (FC)

**Description:** T cell receptor V $\beta$ 12 (TCR V $\beta$ 12) is a variant of TCR  $\beta$  chain and, along with TCR  $\alpha$  chain, forms the TCR heterodimer. In association with the CD3 complex, TCR  $\alpha/\beta$  is responsible for antigen recognition through interaction with MHC-peptide complex to initiate the T cell-mediated immune responses. The MR11-1 antibody reacts with the V $\beta$  12 TCR of mice bearing the *b* haplotype. It has been reported that *Mtv-8* and *Mtv-9* cause clonally deletion of V $\beta$ 12+ T cells.

### Related Products:

**Product**  
PE Mouse IgG1,  $\kappa$  Isotype Ctrl  
Cell Staining Buffer  
RBC Lysis Buffer (10X)  
TruStain fcX™ (anti-mouse CD16/32)

**Clone**  
MOPC-21

93

**Application**  
FC, ICFC  
FC, ICC, ICFC  
FC, ICFC  
FC



For research use only. Not for diagnostic use. Not for resale. BioLegend will not be held responsible for patent infringement or other violations that may occur with the use of our products.



\*These products may be covered by one or more Limited Use Label Licenses (see the BioLegend Catalog or our website, [www.biolegend.com/ordering#license](http://www.biolegend.com/ordering#license)). BioLegend products may not be transferred to third parties, resold, modified for resale, or used to manufacture commercial products, reverse engineer functionally similar materials, or to provide a service to third parties without written approval of BioLegend. By use of these products you accept the terms and conditions of all applicable Limited Use Label Licenses. Unless otherwise indicated, these products are for research use only and are not intended for human or animal diagnostic, therapeutic or commercial use.