

# Product Data Sheet

## PE anti-mouse TCR Vδ4

**Catalog # / Size:** 134905 / 25 µg

**Clone:** GL2

**Isotype:** Armenian Hamster IgG2, κ

**Immunogen:** G57BL/6 mouse intestinal intra-epithelial lymphocytes

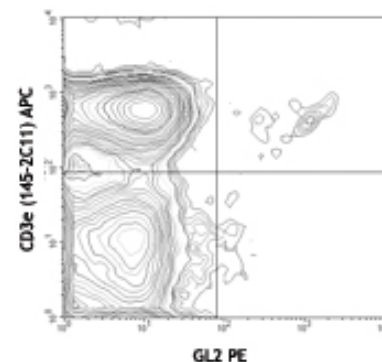
**Reactivity:** Mouse

**Preparation:** The antibody was purified by affinity chromatography, and conjugated with PE under optimal conditions. The solution is free of unconjugated PE and unconjugated antibody.

**Formulation:** Phosphate-buffered solution, pH 7.2, containing 0.09% sodium azide.

**Concentration:** 0.2 mg/ml

**Storage:** The antibody solution should be stored undiluted at 4°C and protected from prolonged exposure to light. **Do not freeze.**



C57BL/6 lymph node cells stained with GL2 PE and CD3e (145-2C11) APC

## Applications:

**Applications:** FC - Quality tested

**Recommended Usage:** Each lot of this antibody is quality control tested by immunofluorescent staining with flow cytometric analysis. For immunofluorescent staining, the suggested use of this reagent is ≤0.25 µg per million cells in 100 µl volume. It is recommended that the reagent be titrated for optimal performance for each application.

**Application References:**

1. Lefrancois L, *et al.* 1990. *Cell*. 66:33
2. Sperling AI, *et al.* 1992. *J. Immunol.* 149(10):3200
3. Pereira P, *et al.* 1997. *Proc. Natl. Acad. Sci. USA.* 94:5761

**Description:** Lymphocytes expressing γ/δ antigen receptors constitute a minor population in lymphoid tissue, but a major population within epidermal, gastrointestinal, and vaginouterine epithelia. Gamma/Delta T cells are involved in immunological surveillance of epithelia separating the external environment from the internal milieu. The GL2 antibody reacts with Vδ4 T-cell receptor (TCR) bearing T cells, which are the predominant γ/δ T cells in intestinal epithelium (γ/δ IEL). Gamma/delta T cells has been found in mammary gland as well. The frequency of Vδ4 TCR-bearing cells varies among inbred strains of mice.

**Antigen References:**

1. Reardon C *et al.* 1990. *J. Exp. Med.* 172:1263
2. Goodman T *et al.* 1989. *J. Exp. Med.* 170:1569

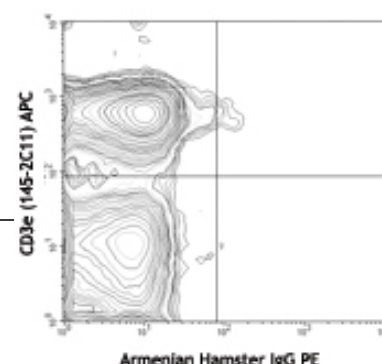
### Related Products:

**Product**  
 PE Armenian Hamster IgG Isotype Ctrl  
 Cell Staining Buffer  
 RBC Lysis Buffer (10X)  
 TruStain fcX™ (anti-mouse CD16/32)

**Clone**  
 HTK888

93

**Application**  
 FC, ICFC  
 FC, ICC, ICFC  
 FC, ICFC  
 FC



C57BL/6 lymph node cells stained with Armenian Hamster IgG (HTK888) PE isotype control and CD3e (145-2C11) APC



For research use only. Not for diagnostic use. Not for resale. BioLegend will not be held responsible for patent infringement or other violations that may occur with the use of our products.



\*These products may be covered by one or more Limited Use Label Licenses (see the BioLegend Catalog or our website, [www.biollegend.com/ordering#license](http://www.biollegend.com/ordering#license)). BioLegend products may not be transferred to third parties, resold, modified for resale, or used to manufacture commercial products, reverse engineer functionally similar materials, or to provide a service to third parties without written approval of BioLegend. By use of these products you accept the terms and conditions of all applicable Limited Use Label Licenses. Unless otherwise indicated, these products are for research use only and are not intended for human or animal diagnostic, therapeutic or commercial use.