

PE anti-mouse Tim-4

Catalog # / Size: 130005 / 25 µg
130006 / 100 µg

Clone: RMT4-54

Isotype: Rat IgG2a, κ

Immunogen: Mouse TIM4-Ig fusion protein

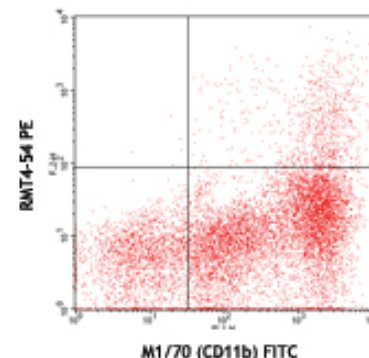
Reactivity: Mouse

Preparation: The antibody was purified by affinity chromatography, and conjugated with PE under optimal conditions. The solution is free of unconjugated PE and unconjugated antibody.

Formulation: Phosphate-buffered solution, pH 7.2, containing 0.09% sodium azide.

Concentration: 0.2 mg/ml

Storage: The antibody solution should be stored undiluted at 4°C and protected from prolonged exposure to light. **Do not freeze.**



BALB/c peritoneal macrophages
stained with RMT4-54 PE and M1/70
(CD11b) FITC

Applications:

Applications: FC - *Quality tested*

Recommended Usage: Each lot of this antibody is quality control tested by immunofluorescent staining with flow cytometric analysis. For immunofluorescent staining, the suggested use of this reagent is ≤0.25 µg per million cells in 100 µl volume. It is recommended that the reagent be titrated for optimal performance for each application.

Description: TIM4 is a transmembrane protein known as T cell immunoglobulin and mucin domain containing protein-4. It is expressed on antigen-presenting cells and not on T cells. TIM4 binds to TIM1 to promote T cell proliferation by enhancing cell division and reducing apoptosis. TIM4 bind to phosphatidylserine through its FG-CC' binding cleft in the N-terminal IgV domain to facilitate the clearance of apoptotic cells or bodies.

Antigen References:

1. Kuchroo VK, *et al.* 2008. *Nat. Rev. Immunol.* 8:577
2. Miyanishi M, *et al.* 2007. *Nature* 450:435
3. Rodriguez-Manzanet R, *et al.* 2008. *J. Immunol.* 180:4706

Related Products:	Product	Clone	Application
	PE Rat IgG2a, κ Isotype Ctrl	RTK2758	FC, ICFC
	Cell Staining Buffer		FC, ICC, ICFC
	RBC Lysis Buffer (10X)		FC, ICFC
	TruStain fcX™ (anti-mouse CD16/32)	93	FC



For research use only. Not for diagnostic use. Not for resale. BioLegend will not be held responsible for patent infringement or other violations that may occur with the use of our products.



*These products may be covered by one or more Limited Use Label Licenses (see the BioLegend Catalog or our website, www.biolegend.com/ordering#license). BioLegend products may not be transferred to third parties, resold, modified for resale, or used to manufacture commercial products, reverse engineer functionally similar materials, or to provide a service to third parties without written approval of BioLegend. By use of these products you accept the terms and conditions of all applicable Limited Use Label Licenses. Unless otherwise indicated, these products are for research use only and are not intended for human or animal diagnostic, therapeutic or commercial use.