

Alexa Fluor® 647 anti-mouse Tim-2

Catalog # / Size: 129007 / 25 µg

Clone: F37-2C4

Isotype: Mouse IgG1, κ

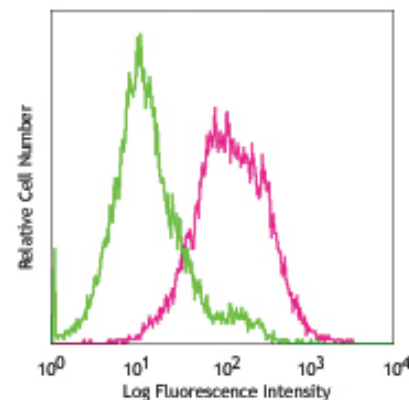
Reactivity: Mouse

Preparation: The antibody was purified by affinity chromatography, and conjugated with Alexa Fluor® 647 under optimal conditions. The solution is free of unconjugated Alexa Fluor® 647.

Formulation: Phosphate-buffered solution, pH 7.2, containing 0.09% sodium azide.

Concentration: 0.5 mg/ml

Storage: The antibody solution should be stored undiluted at 4°C and protected from prolonged exposure to light. **Do not freeze.**



Mouse Tim-2 transfected cells stained with F37-2C4 Alexa Fluor® 647

Applications:

Applications: FC - *Quality tested*
IF - *Reported in the literature*

Recommended Usage: Each lot of this antibody is quality control tested by immunofluorescent staining with flow cytometric analysis. For immunofluorescent staining, the suggested use of this reagent is ≤ 1.0 µg per 10⁶ cells in 100 µl volume. It is recommended that the reagent be titrated for optimal performance for each application.

* Alexa Fluor® 647 has a maximum emission of 668 nm when it is excited at 633nm / 635nm.

** Alexa Fluor® is a registered trademark of Molecular Probes, Inc. Alexa Fluor® dye antibody conjugates are sold under license from Molecular Probes, Inc. for research use only, except for use in combination with microarrays and high content screening, and are covered by pending and issued patents.

Description: Tim-2 is a transmembrane protein known as T cell immunoglobulin and mucin domain containing protein-2. It is expressed on activated T cells and preferentially on differentiated Th₂ cells. Sema4A is the ligand of Tim-2. A blockade of Tim-2/Tim-2 ligand interaction results in T cell hyperproliferation and Th₂ cytokine production. Tim-2 plays a critical role in the development of atopic disease and other Th₂-biased immune responses.

Antigen References: 1. Kuchroo VK, *et al.* 2003. *Nat. Rev. Immunol.* 3:454.
2. Kumanogoh A, *et al.* 2002. *Nature* 419:629.
3. Chakravarti S, *et al.* 2005. *J. Exp. Med.* 202:437

Related Products:

Product
Alexa Fluor® 647 Mouse IgG1, κ Isotype Ctrl (FC)
Cell Staining Buffer
RBC Lysis Buffer (10X)

Clone
MOPC-21

Application
FC, IF
FC, ICC, ICFC
FC, ICFC



For research use only. Not for diagnostic use. Not for resale. BioLegend will not be held responsible for patent infringement or other violations that may occur with the use of our products.



*These products may be covered by one or more Limited Use Label Licenses (see the BioLegend Catalog or our website, www.biolegend.com/ordering#license). BioLegend products may not be transferred to third parties, resold, modified for resale, or used to manufacture commercial products, reverse engineer functionally similar materials, or to provide a service to third parties without written approval of BioLegend. By use of these products you accept the terms and conditions of all applicable Limited Use Label Licenses. Unless otherwise indicated, these products are for research use only and are not intended for human or animal diagnostic, therapeutic or commercial use.