

Product Data Sheet

PE anti-mouse Tim-2

Catalog # / Size: 129006 / 100 µg

Clone: F37-2C4

Isotype: Mouse IgG1, κ

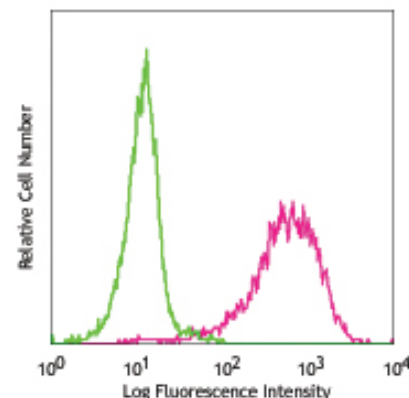
Reactivity: Mouse

Preparation: The antibody was purified by affinity chromatography, and conjugated with PE under optimal conditions. The solution is free of unconjugated PE and unconjugated antibody.

Formulation: Phosphate-buffered solution, pH 7.2, containing 0.09% sodium azide.

Concentration: 0.2 mg/ml

Storage: The antibody solution should be stored undiluted at 4°C and protected from prolonged exposure to light. **Do not freeze.**



Mouse Tim-2 transfected cells stained with F37-2C4 PE

Applications:

Applications: FC - Quality tested

Recommended Usage: Each lot of this antibody is quality control tested by immunofluorescent staining with flow cytometric analysis. For immunofluorescent staining, the suggested use of this reagent is ≤ 1.0 µg per 10^6 cells in 100 µl volume. It is recommended that the reagent be titrated for optimal performance in each application.

Description: Tim-2 is a transmembrane protein known as T cell immunoglobulin and mucin domain containing protein-2. It is expressed on activated T cells and preferentially on differentiated Th₂ cells. Sema4A is the ligand of Tim-2. A blockade of Tim-2/Tim-2 ligand interaction results in T cell hyperproliferation and Th₂ cytokine production. Tim-2 plays a critical role in the development of atopic disease and other Th₂-biased immune responses.

Antigen References:

1. Kuchroo VK, *et al.* 2003. *Nat. Rev. Immunol.* 3:454.
2. Kumanogoh A, *et al.* 2002. *Nature* 419:629.
3. Chakravarti S, *et al.* 2005. *J. Exp. Med.* 202:437

Related Products:

Product
 PE Mouse IgG1, κ Isotype Ctrl
 Cell Staining Buffer
 RBC Lysis Buffer (10X)
 TruStain fcX™ (anti-mouse CD16/32)

Clone
 MOPC-21

93

Application
 FC, ICFC
 FC, ICC, ICFC
 FC, ICFC
 FC



For research use only. Not for diagnostic use. Not for resale. BioLegend will not be held responsible for patent infringement or other violations that may occur with the use of our products.



*These products may be covered by one or more Limited Use Label Licenses (see the BioLegend Catalog or our website, www.biollegend.com/ordering#license). BioLegend products may not be transferred to third parties, resold, modified for resale, or used to manufacture commercial products, reverse engineer functionally similar materials, or to provide a service to third parties without written approval of BioLegend. By use of these products you accept the terms and conditions of all applicable Limited Use Label Licenses. Unless otherwise indicated, these products are for research use only and are not intended for human or animal diagnostic, therapeutic or commercial use.