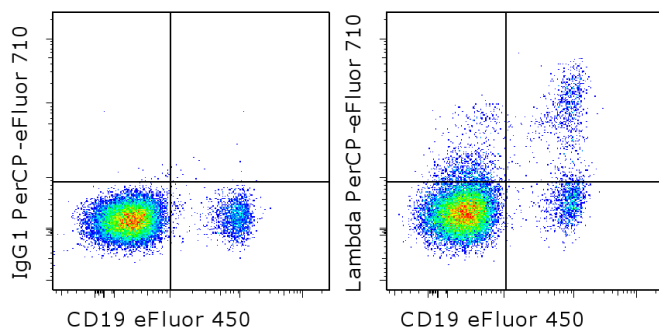


Anti-Human Ig lambda Light Chain PerCP-eFluor® 710

Catalog Number: 46-9990

Also known as: Immunoglobulin L, IgL

RUO: For Research Use Only. Not for use in diagnostic procedures.



Staining of normal human peripheral blood cells with Anti-Human CD19 eFluor® 450 (cat. 48-0199) and Mouse IgG1 K Isotype Control PerCP-eFluor® 710 (cat. 46-4714) (left) or Anti-Human Ig lambda Light Chain PerCP-eFluor® 710 (right). Cells in the lymphocyte gate were used for analysis.

Product Information

Contents: Anti-Human Ig lambda Light Chain PerCP-eFluor® 710

Catalog Number: 46-9990

Clone: 1-155-2

Concentration: 5 uL (0.25 ug)/test

Host/Isotype: Mouse IgG1, kappa

Formulation: aqueous buffer, 0.09% sodium azide, may contain carrier protein/stabilizer

Temperature Limitation: Store at 2-8°C. Do not freeze. Light-sensitive material.

Batch Code: Refer to vial

Use By: Refer to vial

Description

The monoclonal antibody 1-155-2 recognizes the lambda light chain of human immunoglobulin. Approximately 22-kDa, the Ig lambda chain is comprised of one variable and one constant region. Two lambda chains together with the heavy chain comprise the whole Ig structure. Expression of Ig lambda is typically found in less than half of B lymphocytes, and has been associated with neoplastic lymphomas.

Applications Reported

This 1-155-2 antibody has been reported for use in flow cytometric analysis.

Applications Tested

This 1-155-2 antibody has been pre-titrated and tested by flow cytometric analysis of normal human peripheral blood cells. This can be used at 5 µL (0.25 µg) per test. A test is defined as the amount (µg) of antibody that will stain a cell sample in a final volume of 100 µL. Cell number should be determined empirically but can range from 10⁵ to 10⁸ cells/test.

PerCP-eFluor® 710 can be used in place of PE-Cy5, PE-Cy5.5 or PerCP-Cy5.5. PerCP-eFluor® 710 emits at 710 nm and is excited with the blue laser (488 nm). Please make sure that your instrument is capable of detecting this fluorochrome. For a filter configuration, we recommend using the 685 LP dichroic mirror and 710/40 band pass filter, however the 695/40 band pass filter is an acceptable alternative.

Our testing indicates that PerCP-eFluor® 710 conjugated antibodies are stable when stained samples are exposed to freshly prepared 2% formaldehyde overnight at 4°C, but please evaluate for alternative fixation protocols.

Click here or contact eBioscience Technical Support for more information on eFluor™ Organic Dyes including PerCP-eFluor® 710.

References

Bahler DW, Pindzola JA, Swerdlow SH. Splenic marginal zone lymphomas appear to originate from different B cell

Not for further distribution without written consent.

Copyright © 2000-2012 eBioscience, Inc.

Tel: 888.999.1371 or 858.642.2058 • Fax: 858.642.2046 • www.ebioscience.com • info@ebioscience.com

Anti-Human Ig lambda Light Chain PerCP-eFluor® 710

Catalog Number: 46-9990

Also known as: Immunoglobulin L, IgL

RUO: For Research Use Only. Not for use in diagnostic procedures.

types. m J Pathol. 2002 Jul;161(1):81-8.

Perez MT, Cabello-Inchausti B, Viamonte M Jr, Nixon D. Pleural body cavity-based lymphoma. Ann Diagn Pathol 1998; 2: 127-134

Related Products

46-4714 Mouse IgG1 K Isotype Control PerCP-eFluor® 710 (P3.6.2.8.1)

48-0199 Anti-Human CD19 eFluor® 450 (HIB19)