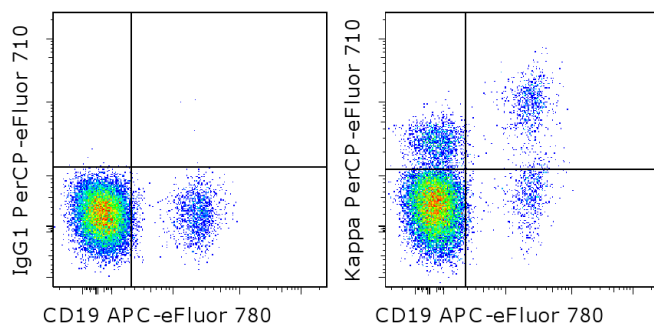


## Anti-Human Ig kappa Light Chain PerCP-eFluor® 710

**Catalog Number:** 46-9970

**Also known as:** Immunoglobulin, Ig k

**RUO: For Research Use Only. Not for use in diagnostic procedures.**



Staining of normal human peripheral blood cells with Anti-Human CD19 APC-eFluor® 780 (cat. 47-0199) and Mouse IgG1 K Isotype Control PerCP-eFluor® 710 (cat. 46-4714) (left) or Anti-Human Ig kappa light chain PerCP-eFluor® 710 (right). Cells in the lymphocyte gate were used for analysis.

### Product Information

**Contents:** Anti-Human Ig kappa Light Chain PerCP-eFluor® 710

**Catalog Number:** 46-9970

**Clone:** TB28-2

**Concentration:** 5 µL (0.5 µg)/test

**Host/Isotype:** Mouse IgG1, kappa

**Formulation:** aqueous buffer, 0.09% sodium azide, may contain carrier protein/stabilizer

**Temperature Limitation:** Store at 2-8°C. Do not freeze. Light-sensitive material.

**Batch Code:** Refer to vial

**Use By:** Refer to vial

### Description

The monoclonal antibody TB28-2 recognizes the kappa light chain of human immunoglobulin. Approximately 22-kDa, the Ig kappa chain is comprised of one variable and one constant region. Two kappa chains together with the heavy chain comprise the whole Ig structure. Expression of Ig kappa is typically found on more than half of B lymphocytes.

### Applications Reported

This TB28-2 antibody has been reported for use in flow cytometric analysis.

### Applications Tested

This TB28-2 antibody has been pre-titrated and tested by flow cytometric analysis of normal human peripheral blood cells. This can be used at 5 µL (0.5 µg) per test. A test is defined as the amount (µg) of antibody that will stain a cell sample in a final volume of 100 µL. Cell number should be determined empirically but can range from 10<sup>5</sup> to 10<sup>8</sup> cells/test.

PerCP-eFluor® 710 can be used in place of PE-Cy5, PE-Cy5.5 or PerCP-Cy5.5. PerCP-eFluor® 710 emits at 710 nm and is excited with the blue laser (488 nm). Please make sure that your instrument is capable of detecting this fluorochrome. For a filter configuration, we recommend using the 685 LP dichroic mirror and 710/40 band pass filter, however the 695/40 band pass filter is an acceptable alternative.

Our testing indicates that PerCP-eFluor® 710 conjugated antibodies are stable when stained samples are exposed to freshly prepared 2% formaldehyde overnight at 4°C, but please evaluate for alternative fixation protocols.

Click [here](#) or contact eBioscience Technical Support for more information on eFluor™ Organic Dyes including PerCP-eFluor® 710.

### References

Bahler DW, Pindzola JA, Swerdlow SH. Splenic marginal zone lymphomas appear to originate from different B cell

Not for further distribution without written consent.

Copyright © 2000-2012 eBioscience, Inc.

Tel: 888.999.1371 or 858.642.2058 • Fax: 858.642.2046 • [www.ebioscience.com](http://www.ebioscience.com) • [info@ebioscience.com](mailto:info@ebioscience.com)

---

## **Anti-Human Ig kappa Light Chain PerCP-eFluor® 710**

**Catalog Number:** 46-9970

**Also known as:** Immunoglobulin, Ig k

**RUO: For Research Use Only. Not for use in diagnostic procedures.**

---

types. m J Pathol. 2002 Jul;161(1):81-8.

Perez MT, Cabello-Inchausti B, Viamonte M Jr, Nixon D. Pleural body cavity-based lymphoma. Ann Diagn Pathol 1998; 2: 127-134

### **Related Products**

46-4714 Mouse IgG1 K Isotype Control PerCP-eFluor® 710 (P3.6.2.8.1)

47-0199 Anti-Human CD19 APC-eFluor® 780 (HIB19)