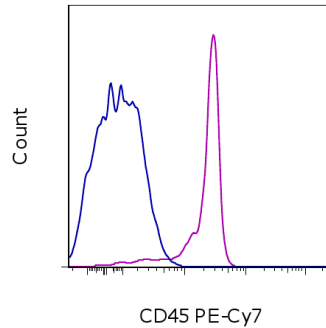


Anti-Human CD45 PE-Cyanine7

Catalog Number: 25-0459

Also known as: Leukocyte Common Antigen, LCA, Ly-5

RUO: For Research Use Only. Not for use in diagnostic procedures.



Staining of normal human peripheral blood cells with Mouse IgG1 K Isotype Control PE-Cyanine7 (cat. 25-4714) (blue histogram) or Anti-Human CD45 PE-Cyanine7 (purple histogram). Cells in the lymphocyte gate were used for analysis.

Product Information



Contents: Anti-Human CD45 PE-Cyanine7

Catalog Number: 25-0459

Clone: HI30

Concentration: 5 μ L (0.125 μ g)/test

Host/Isotype: Mouse IgG1, kappa

HLDA Workshop: IV N816



Formulation: aqueous buffer, 0.09% sodium

azide, may contain carrier protein/stabilizer

Temperature Limitation: Store at 2-8°C. Do not freeze. Light-sensitive material. This tandem dye is sensitive to photo-induced oxidation. Protect this vial from light during storage, handling & experimental procedures.



Batch Code: Refer to vial



Use By: Refer to vial



Caution, contains Azide

Description

The HI30 monoclonal antibody reacts with all isoforms of human CD45, also known as Leukocyte Common Antigen (LCA). CD45 is expressed by all hematopoietic cells excluding circulating erythrocytes and platelets. The cytoplasmic portion of CD45 has tyrosine phosphatase enzymatic activity and plays an important role in activation of lymphocytes.

Applications Reported

This HI30 antibody has been reported for use in flow cytometric analysis.

Applications Tested

This HI30 antibody has been pre-titrated and tested by flow cytometric analysis of human peripheral blood leukocytes. This can be used at 5 μ L (0.125 μ g) per test. A test is defined as the amount (μ g) of antibody that will stain a cell sample in a final volume of 100 μ L. Cell number should be determined empirically but can range from 10^5 to 10^8 cells/test.

Light sensitivity: This tandem dye is sensitive photo-induced oxidation. Please protect this vial and stained samples from light.

Fixation: Samples can be stored in IC Fixation Buffer (cat. 00-8222) (100 μ L cell sample + 100 μ L IC Fixation Buffer) or 1-step Fix/Lyse Solution (cat. 00-5333) for up to 3 days in the dark at 4°C with minimal impact on brightness and FRET efficiency/compensation. Some generalizations regarding fluorophore performance after fixation can be made, but clone specific performance should be determined empirically.

References

Ninomiya M, Abe A, Katsumi A, Xu J, Ito M, Arai F, Suda T, Ito M, Kiyoi H, Kinoshita T, Naoe T. Homing, proliferation and survival sites of human leukemia cells in vivo in immunodeficient mice. *Leukemia*. 2007 Jan;21(1):136-42.(HI30,

Not for further distribution without written consent.

Copyright © 2000-2012 eBioscience, Inc.

Tel: 888.999.1371 or 858.642.2058 • Fax: 858.642.2046 • www.ebioscience.com •
info@ebioscience.com

Anti-Human CD45 PE-Cyanine7

Catalog Number: 25-0459

Also known as: Leukocyte Common Antigen, LCA, Ly-5

RUO: For Research Use Only. Not for use in diagnostic procedures.

IF frozen)

Bouma-ter Steege JC, Baeten CI, Thijssen VL, Satijn SA, Verhoeven IC, Hillen HF, Wagstaff J, Griffioen AW. Angiogenic profile of breast carcinoma determines leukocyte infiltration. Clin Cancer Res. 2004 Nov 1;10(21):7171-8. (HI30, IHC frozen)

Knapp, W., B. Dorken, et al. eds. (1989). Leucocyte Typing IV: White Cell Differentiation Antigens. Oxford University Press. New York.

Related Products

00-4222 Flow Cytometry Staining Buffer

25-4714 Mouse IgG1 K Isotype Control PE-Cyanine7 (P3.6.2.8.1)

Legal

FOR NON-COMMERCIAL RESEARCH USE ONLY. NOT FOR THERAPEUTIC OR IN VIVO APPLICATIONS. OTHER USE NEEDS LICENSE FROM GE HEALTHCARE BIO-SCIENCES CORP. UNDER U.S. PATENT FOR NON-COMMERCIAL RESEARCH USE ONLY. NOT FOR THERAPEUTIC OR IN VIVO APPLICATIONS. OTHER USE NEEDS LICENSE FROM GE HEALTHCARE BIO-SCIENCES CORP. UNDER U.S. PATENT # 5,268,486, 5,569,587 AND 5,627,027 AND FOREIGN EQUIVALENTS AND PENDING APPLICATIONS. THIS MATERIAL IS SUBJECT TO PROPRIETARY RIGHTS OF GE HEALTHCARE BIO-SCIENCES CORP. AND CARNEGIE MELLON UNIVERSITY AND MADE AND SOLD UNDER LICENSE FROM GE HEALTHCARE BIO-SCIENCES CORP. THIS PRODUCT IS LICENSED FOR SALE ONLY FOR RESEARCH. IT IS NOT LICENSED FOR ANY OTHER USE. THERE IS NO IMPLIED LICENSE HEREUNDER FOR ANY COMMERCIAL USE. COMMERCIAL USE shall include: 1. sale, lease, license or other transfer of the material or any material derived or produced from it; 2. sale, lease, license or other grant of rights to use this Material or any material derived or produced from it; 3. use of this material to perform services for a fee for third parties. IF YOU REQUIRE A COMMERCIAL LICENSE TO USE THIS MATERIAL AND DO NOT HAVE ONE, RETURN THIS MATERIAL, UNOPENED TO EBIOSCIENCE, INC. 10255 SCIENCE CENTER DRIVE, SAN DIEGO, CALIFORNIA 92121 USA AND ANY MONEY PAID FOR THE MATERIAL WILL BE REFUNDED.

Not for further distribution without written consent.

Copyright © 2000-2012 eBioscience, Inc.

Tel: 888.999.1371 or 858.642.2058 • Fax: 858.642.2046 • www.ebioscience.com •
info@ebioscience.com