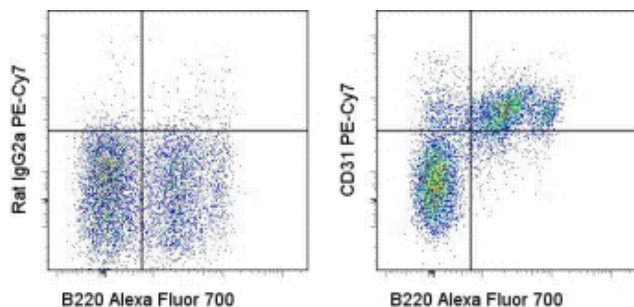


Anti-Mouse CD31 (PECAM-1) PE-Cyanine7

Catalog Number: 25-0311

Also Known As: Platelet-Endothelial Cell Adhesion Molecule 1

RUO: For Research Use Only. Not for use in diagnostic procedures.



Staining of BALB/c bone marrow cells with Anti-Human/Mouse CD45R (B220) Alexa Fluor® 700 (cat. 56-0452) and 0.25 ug of Rat IgG2a K Isotype Control PE-Cyanine7 (cat. 25-4321) (left) or 0.25 ug of Anti-Mouse CD31 (PECAM-1) PE-Cyanine7 (right). Total viable cells were used for analysis.

Product Information

Contents: Anti-Mouse CD31 (PECAM-1) PE-Cyanine7

REF **Catalog Number:** 25-0311

Clone: 390

Concentration: 0.2 mg/mL

Host/Isotype: Rat IgG2a, kappa

Formulation: aqueous buffer, 0.09% sodium azide, may contain carrier protein/stabilizer

Temperature Limitation: Store at 2-8°C. Do not freeze. Light-sensitive material. This tandem dye is sensitive to photo-induced oxidation. Protect this vial from light during storage, handling & experimental procedures.



LOT **Batch Code:** Refer to Vial



Use By: Refer to Vial



Caution, contains Azide

Description

The 390 monoclonal antibody reacts with mouse CD31, also known as platelet-endothelial cell adhesion molecule-1 (PECAM-1) and gpIIa. This 130-140 kDa surface protein is expressed by endothelial cells and at low levels on all leukocytes and platelets. It has been reported that CD38 binds to CD31. Homotypic interaction of CD31 is important in adhesion, cell-cell and cell-matrix interaction, and signal transduction.

Applications Reported

This 390 antibody has been reported for use in flow cytometric analysis.

Applications Tested

This 390 antibody has been tested by flow cytometric analysis of mouse splenocyte suspensions. This can be used at less than or equal to 0.5 µg per test. A test is defined as the amount (µg) of antibody that will stain a cell sample in a final volume of 100 µL. Cell number should be determined empirically but can range from 10⁵ to 10⁸ cells/test. It is recommended that the antibody be carefully titrated for optimal performance in the assay of interest.

Light sensitivity: This tandem dye is sensitive photo-induced oxidation. Please protect this vial and stained samples from light.

Fixation: Samples can be stored in IC Fixation Buffer (cat. 00-8222) (100 uL cell sample + 100 uL IC Fixation Buffer) or 1-step Fix/Lyse Solution (cat. 00-5333) for up to 3 days in the dark at 4°C with minimal impact on brightness and FRET efficiency/compensation. Some generalizations regarding fluorophore performance after fixation can be made, but clone specific performance should be determined empirically.

References

Sadri N, Schneider RJ. Auf1/Hnnpd-Deficient Mice Develop Pruritic Inflammatory Skin Disease. *J Invest Dermatol.* 2009 Mar;129(3):657-70. (390, IHC frozen, PubMed)

Cao G, O'Brien CD, Zhou Z, Sanders SM, Greenbaum JN, Makrigiannakis A, DeLisser HM. Involvement of human PECAM-1 in angiogenesis and in vitro endothelial cell migration. *Am J Physiol Cell Physiol.* 2002 May;282(5):C1181-90. (390, IHC frozen)

Wiewrodt R, Anu P, Thomas, Luca Cipelletti, Melpo Christofidou-Solomidou, David A. Weitz, Sheldon I. Feinstein, David Schaffer, Steven M. Albelda, Michael Koval, and Vladimir R. Muzykantov. Size-dependent intracellular immunotargeting of therapeutic cargoes into endothelial cells. *Blood.* 2002 Feb 1;99(3):912-22.

Horenstein AL, Stockinger H, Imhof BA, Malavasi F. CD38 binding to human myeloid cells is mediated by mouse and human CD31. *Biochem J.*

1998 Mar 15;330 (Pt 3):1129-35.

Baldwin HS, Shen HM, Yan HC, DeLisser HM, Chung A, Mickanin C, Trask T, Kirschbaum NE, Newman PJ, Albelda SM, et al. Platelet endothelial cell adhesion molecule-1 (PECAM-1/CD31): alternatively spliced, functionally distinct isoforms expressed during mammalian cardiovascular development. *Development*. 1994 Sep;120(9):2539-53.

Related Products

25-4321 Rat IgG2a K Isotype Control PE-Cyanine7 (eBR2a)

56-0452 Anti-Human/Mouse CD45R (B220) Alexa Fluor® 700 (RA3-6B2)

Legal

FOR NON-COMMERCIAL RESEARCH USE ONLY. NOT FOR THERAPEUTIC OR IN VIVO APPLICATIONS. OTHER USE NEEDS LICENSE FROM GE HEALTHCARE BIO-SCIENCES CORP. UNDER U.S. PATENT FOR NON-COMMERCIAL RESEARCH USE ONLY. NOT FOR THERAPEUTIC OR IN VIVO APPLICATIONS. OTHER USE NEEDS LICENSE FROM GE HEALTHCARE BIO-SCIENCES CORP. UNDER U.S. PATENT # 5,268,486, 5,569,587 AND 5,627,027 AND FOREIGN EQUIVALENTS AND PENDING APPLICATIONS. THIS MATERIAL IS SUBJECT TO PROPRIETARY RIGHTS OF GE HEALTHCARE BIO-SCIENCES CORP. AND CARNEGIE MELLON UNIVERSITY AND MADE AND SOLD UNDER LICENSE FROM GE HEALTHCARE BIO-SCIENCES CORP. THIS PRODUCT IS LICENSED FOR SALE ONLY FOR RESEARCH. IT IS NOT LICENSED FOR ANY OTHER USE. THERE IS NO IMPLIED LICENSE HEREUNDER FOR ANY COMMERCIAL USE. COMMERCIAL USE shall include: 1. sale, lease, license or other transfer of the material or any material derived or produced from it; 2. sale, lease, license or other grant of rights to use this Material or any material derived or produced from it; 3. use of this material to perform services for a fee for third parties. IF YOU REQUIRE A COMMERCIAL LICENSE TO USE THIS MATERIAL AND DO NOT HAVE ONE, RETURN THIS MATERIAL, UNOPENED TO EBIOSCIENCE, INC. 10255 SCIENCE CENTER DRIVE, SAN DIEGO, CALIFORNIA 92121 USA AND ANY MONEY PAID FOR THE MATERIAL WILL BE REFUNDED.

Not for further distribution without written consent.

Copyright © 2000-2012 eBioscience, Inc.

Tel: 888.999.1371 or 858.642.2058 • Fax: 858.642.2046 • www.eBioscience.com • info@eBioscience.com