

PE anti-mouse Siglec H

Catalog # / Size: 129605 / 25 µg
129606 / 100 µg

Clone: 551

Isotype: Rat IgG1, κ

Immunogen: Siglec-H-Fc recombinant fusion protein

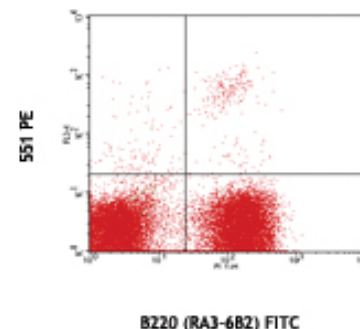
Reactivity: Mouse

Preparation: The antibody was purified by affinity chromatography, and conjugated with PE under optimal conditions. The solution is free of unconjugated PE and unconjugated antibody.

Formulation: Phosphate-buffered solution, pH 7.2, containing 0.09% sodium azide.

Concentration: 0.2 mg/ml

Storage: The antibody solution should be stored undiluted at 4°C and protected from prolonged exposure to light. **Do not freeze.**



C57BL/6 splenocytes stained with B220 (RA3-6B2) FITC and 551 PE

Applications:

Applications: FC - Quality tested

Recommended Usage: Each lot of this antibody is quality control tested by immunofluorescent staining with flow cytometric analysis. For immunofluorescent staining, the suggested use of this reagent is ≤ 0.25 µg per 10⁶ cells in 100 µl volume. It is recommended that the reagent be titrated for optimal performance for each application.

Application References: 1. Blasius AL, *et al.* 2006. *J. Immunol.* 177:3260.

Description: The Siglec-H is a member of CD33-related Siglec family which mostly expressed in the innate immune system. Siglec-H is reported to be specifically expressed on plasmacytoid dendritic cells. Siglec-H depends on adaptor protein DAP 12 (DNAX-activating protein of 12 kD) for surface expression and signal transduction. Cross-linking with this antibody can selectively inhibit interferon-alpha production by IPCs following TLR9 ligation.

Antigen References: 1. Blasius AL, *et al.* 2006. *Blood* 107:2474.
2. Zhang J, *et al.* 2006. *Blood* 107:3600.
3. Blasius AL, *et al.* 2007. *J. Exp. Med.* 204:2561.

Related Products:

Product	Clone	Application
PE Rat IgG1, κ Isotype Ctrl	RTK2071	FC, ICFC
Cell Staining Buffer		FC, ICC, ICFC
RBC Lysis Buffer (10X)		FC, ICFC
TruStain fcX™ (anti-mouse CD16/32)	93	FC



For research use only. Not for diagnostic use. Not for resale. BioLegend will not be held responsible for patent infringement or other violations that may occur with the use of our products.



*These products may be covered by one or more Limited Use Label Licenses (see the BioLegend Catalog or our website, www.biolegend.com/ordering#license). BioLegend products may not be transferred to third parties, resold, modified for resale, or used to manufacture commercial products, reverse engineer functionally similar materials, or to provide a service to third parties without written approval of BioLegend. By use of these products you accept the terms and conditions of all applicable Limited Use Label Licenses. Unless otherwise indicated, these products are for research use only and are not intended for human or animal diagnostic, therapeutic or commercial use.