

## PerCP/Cy5.5 anti-mouse TCR V $\alpha$ 2

**Catalog # / Size:** 127813 / 25  $\mu$ g  
127814 / 100  $\mu$ g

**Clone:** B20.1

**Isotype:** Rat IgG2a,  $\lambda$

**Immunogen:** Soluble TCR from mouse CTL clone KB5-C20

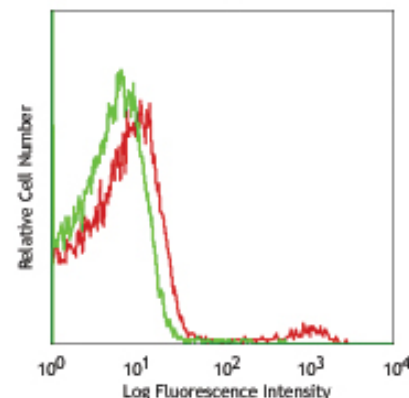
**Reactivity:** Mouse

**Preparation:** The antibody was purified by affinity chromatography, and conjugated with PerCP/Cy5.5 under optimal conditions. The solution is free of unconjugated PerCP/Cy5.5 and unconjugated antibody.

**Formulation:** Phosphate-buffered solution, pH 7.2, containing 0.09% sodium azide.

**Concentration:** 0.2 mg/ml

**Storage:** The antibody solution should be stored undiluted at 4°C and protected from prolonged exposure to light. **Do not freeze.**



BALB/c splenocytes stained with B20.1 PerCP/Cy5.5

## Applications:

**Applications:** FC - Quality tested

**Recommended Usage:** Each lot of this antibody is quality control tested by immunofluorescent staining with flow cytometric analysis. For immunofluorescent staining, the suggested use of this reagent is  $\leq 0.25 \mu$ g per  $10^6$  cells in 100  $\mu$ l volume. It is recommended that the reagent be titrated for optimal performance for each application.

**Application Notes:** The B20.1 antibody recognizes most members of the V $\alpha$ 2 TCR subfamily in mice having the a, b, and c haplotypes.

Cy3, Cy5, Cy5.5 and Cy7 are subject to proprietary rights of GE Healthcare Bio-Sciences Corp. and Carnegie Mellon University and made and sold under license from GE Healthcare Bio-Sciences Corp. Sale of this product is licensed for research use only.

**Application References:**

1. Pircher H, *et al.* 1992. *Eur. J. Immunol.* 22:399.
2. Gregoire C, *et al.* 1991. *P. Natl. Acad. Sci. USA* 88:8077.
3. Kao C, *et al.* 2005. *Int. Immunol.* 17:1607. PubMed
4. Steptoe RJ, *et al.* 2007. *J. Immunol.* 178:2094. PubMed

**Description:** The TCR alpha ( $\alpha$ ) chain complexes with the TCR beta ( $\beta$ ) chain to form the T cell receptor in 95% of T cells, whereas the remaining 5% of T cells express gamma and delta chains ( $\gamma/\delta$ ). TCR V $\alpha$ 2 is a distinct TCR subfamily found in mice having the a, b, and c haplotypes.

**Antigen References:**

1. Kubo RT, *et al.* 1989. *J. Immunol.* 142:2736
2. Pircher H, *et al.* 1992. *Eur. J. Immunol.* 22:399

**Related Products:** **Product**  
TruStain fcX™ (anti-mouse CD16/32)

**Clone**  
93

**Application**  
FC



For research use only. Not for diagnostic use. Not for resale. BioLegend will not be held responsible for patent infringement or other violations that may occur with the use of our products.



\*These products may be covered by one or more Limited Use Label Licenses (see the BioLegend Catalog or our website, [www.biolegend.com/ordering#license](http://www.biolegend.com/ordering#license)). BioLegend products may not be transferred to third parties, resold, modified for resale, or used to manufacture commercial products, reverse engineer functionally similar materials, or to provide a service to third parties without written approval of BioLegend. By use of these products you accept the terms and conditions of all applicable Limited Use Label Licenses. Unless otherwise indicated, these products are for research use only and are not intended for human or animal diagnostic, therapeutic or commercial use.