

Alexa Fluor® 647 anti-mouse TCR V α 2

Catalog # / Size: 127811 / 25 μ g
 127812 / 100 μ g

Clone: B20.1

Isotype: Rat IgG2a, λ

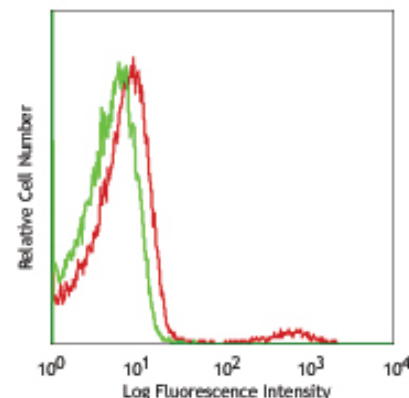
Reactivity: Mouse

Preparation: The antibody was purified by affinity chromatography, and conjugated with Alexa Fluor® 647 under optimal conditions. The solution is free of unconjugated Alexa Fluor® 647.

Formulation: Phosphate-buffered solution, pH 7.2, containing 0.09% sodium azide.

Concentration: 0.5 mg/ml

Storage: The antibody solution should be stored undiluted at 4°C and protected from prolonged exposure to light. **Do not freeze.**



BALB/c splenocytes stained with B20.1 Alexa Fluor® 647

Applications:

Applications: FC -Quality tested

Recommended Usage: Each lot of this antibody is quality control tested by immunofluorescent staining with flow cytometric analysis. For immunofluorescent staining, the suggested use of this reagent is $\leq 0.25 \mu$ g per 10^6 cells in 100 μ l volume. It is recommended that the reagent be titrated for optimal performance for each application.

* Alexa Fluor® 647 has a maximum emission of 668 nm when it is excited at 633nm / 635nm.

** Alexa Fluor® 647 is a registered trademark of Molecular Probes, Inc. Alexa Fluor® 647 dye antibody conjugates are sold under license from Molecular Probes, Inc. for research use only, except for use in combination with microarrays and high content screening, and are covered by pending and issued patents.

Application Notes: The B20.1 antibody recognizes most members of the V α 2 TCR subfamily in mice having the a, b, and c haplotypes.

Application References:

1. Pircher H, *et al.* 1992. *Eur. J. Immunol.* 22:399.
2. Gregoire C, *et al.* 1991. *P. Natl. Acad. Sci. USA* 88:8077.
3. Kao C, *et al.* 2005. *Int. Immunol.* 17:1607. PubMed
4. Steptoe RJ, *et al.* 2007. *J. Immunol.* 178:2094. PubMed

Description: The TCR alpha (α) chain complexes with the TCR beta (β) chain to form the T cell receptor in 95% of T cells, whereas the remaining 5% of T cells express gamma and delta chains (γ/δ). TCR V α 2 is a distinct TCR subfamily found in mice having the a, b, and c haplotypes.

Antigen References:

1. Kubo RT, *et al.* 1989. *J. Immunol.* 142:2736
2. Pircher H, *et al.* 1992. *Eur. J. Immunol.* 22:399

Related Products: **Product**
 TruStain fcX™ (anti-mouse CD16/32)

Clone
 93

Application
 FC



For research use only. Not for diagnostic use. Not for resale. BioLegend will not be held responsible for patent infringement or other violations that may occur with the use of our products.



*These products may be covered by one or more Limited Use Label Licenses (see the BioLegend Catalog or our website, www.biolegend.com/ordering#license). BioLegend products may not be transferred to third parties, resold, modified for resale, or used to manufacture commercial products, reverse engineer functionally similar materials, or to provide a service to third parties without written approval of BioLegend. By use of these products you accept the terms and conditions of all applicable Limited Use Label Licenses. Unless otherwise indicated, these products are for research use only and are not intended for human or animal diagnostic, therapeutic or commercial use.