

PE anti-mouse/human CD15 (SSEA-1)

Catalog # / Size: 125605 / 25 tests
125606 / 100 tests

Clone: MC-480

Isotype: Mouse IgM, κ

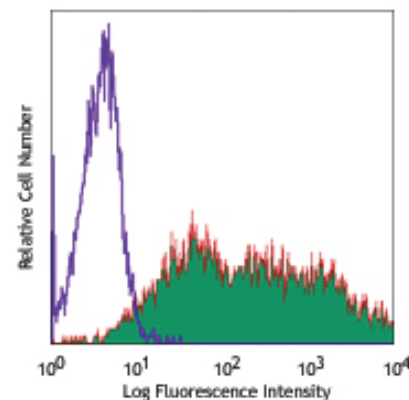
Immunogen: Mouse F9 Teratocarcinoma Stem Cells (X-irradiated)

Reactivity: Mouse, **Cross-Reactivity:** Human

Preparation: The antibody was conjugated with PE under optimal conditions, and is at >85% purity. The solution is free of unconjugated PE and unconjugated antibody.

Formulation: Phosphate-buffered solution, pH 7.2, containing 0.09% sodium azide and 0.2% (w/v) BSA (origin USA).

Storage: The antibody solution should be stored undiluted at 4°C and protected from prolonged exposure to light. **Do not freeze.**



F9 (mouse embryonic carcinoma cell line) stained with MC-480 PE

Applications:

Applications: FC - Quality tested

Recommended Usage: Each lot of this antibody is quality control tested by immunofluorescent staining with flow cytometric analysis. **Test size products are transitioning from 20 μ l to 5 μ l per test.** Please check your vial or your CoA to find the suggested use of this reagent per million cells in 100 μ l staining volume or per 100 μ l of whole blood. It is recommended that the reagent be titrated for optimal performance for each application. Read more at www.biolegend.com/testsize regarding the test size change.

Application Notes: Additional reported applications (for the relevant formats) include: immunoprecipitation¹, Western blotting¹, and immunohistochemistry¹ of acetone-fixed frozen tissue sections and formalin-fixed paraffin-embedded sections.

Application References: 1. Solter D and Knowles BB. 1978. *Proc. Natl. Acad. Sci. USA.* 75:5565. (IHC, IP, WB)

Description: The MC-480 antibody reacts with mouse and human Stage-Specific Embryonic Antigen-1 (SSEA-1). It is a Lewis blood group related carbohydrate antigen, also known as X-hapten, Lewis X, 3-FAL, 3-fucosyl-N-acetyllactosamine, or CD15. The expression pattern of SSEA-1 antigen is different in humans than in mice. In mice, SSEA-1 is expressed on embryonic stem cells (ES), embryonal carcinoma cells (EC), 8-cell to blastocyst embryos, and a subset of embryonic inner cell mass. The expression on murine ES cells is decreased upon differentiation. In humans, however, SSEA-1 is not found on undifferentiated ES cells, but its expression is upregulated along with differentiation. CD15 is highly expressed on adult human granulocytes. It has been reported that SSEA-1 plays a role in cell adhesion and regulation of cell differentiation.

Antigen References: 1. Solter D and Knowles BB. 1978. *Proc. Natl. Acad. Sci. USA.* 75:5565.
2. Harris JF, et al. 1984. *J. Immunol.* 132:2502.
3. Gooi HC, et al. 1981. *Nature* 292:156.
4. Cui L, et al. 2004. *J. Histochem. Cytochem.* 52:1447.

Related Products:	Product	Clone	Application
	PE Mouse IgM, κ Isotype Ctrl	MM-30	FC, ICFC
	Cell Staining Buffer		FC, ICC, ICFC
	RBC Lysis Buffer (10X)		FC, ICFC
	TruStain fcX™ (anti-mouse CD16/32)	93	FC



For research use only. Not for diagnostic use. Not for resale. BioLegend will not be held responsible for patent infringement or other violations that may occur with the use of our products.



*These products may be covered by one or more Limited Use Label Licenses (see the BioLegend Catalog or our website, www.biolegend.com/ordering#license). BioLegend products may not be transferred to third parties, resold, modified for resale, or used to manufacture commercial products, reverse engineer functionally similar materials, or to provide a service to third parties without written approval of BioLegend. By use of these products you accept the terms and conditions of all applicable Limited Use Label Licenses. Unless otherwise indicated, these products are for research use only and are not intended for human or animal diagnostic, therapeutic or commercial use.