

## Purified anti-mouse/human CD15 (SSEA-1)

**Catalog # / Size:** 125601 / 25 µg  
125602 / 100 µg

**Clone:** MC-480

**Isotype:** Mouse IgM, κ

**Immunogen:** Mouse F9 Teratocarcinoma Stem Cells (X-irradiated)

**Reactivity:** Mouse, **Cross-Reactivity:** Human

**Preparation:** This antibody is at >85% purity.

**Formulation:** Phosphate-buffered solution, pH 7.2, containing 0.09% sodium azide.

**Concentration:** 0.5 mg/ml

**Storage:** The antibody solution should be stored undiluted at 4°C.

## Applications:

**Applications:** FC - *Quality tested*  
IP, WB, IHC - *Reported in the literature*

**Recommended Usage:** Each lot of this antibody is quality control tested by immunofluorescent staining with flow cytometric analysis. For immunofluorescent staining, the suggested use of this reagent is ≤0.125 µg per million cells in 100 µl volume. It is recommended that the reagent be titrated for optimal performance for each application.

**Application Notes:** Additional reported applications (for the relevant formats) include: immunoprecipitation<sup>1</sup>, Western blotting<sup>1</sup>, and immunohistochemistry<sup>1</sup> of acetone-fixed frozen tissue sections and formalin-fixed paraffin-embedded sections.

**Application References:** 1. Solter D and Knowles BB. 1978. *Proc. Natl. Acad. Sci. USA.* 75:5565. (IHC, IP, WB)

**Description:** The MC-480 antibody reacts with mouse and human Stage-Specific Embryonic Antigen-1 (SSEA-1). It is a Lewis blood group related carbohydrate antigen, also known as X-hapten, Lewis X, 3-FAL, 3-fucosyl-N-acetyllactosamine, or CD15. The expression pattern of SSEA-1 antigen is different in humans than in mice. In mice, SSEA-1 is expressed on embryonic stem cells (ES), embryonal carcinoma cells (EC), 8-cell to blastocyst embryos, and a subset of embryonic inner cell mass. The expression on murine ES cells is decreased upon differentiation. In humans, however, SSEA-1 is not found on undifferentiated ES cells, but its expression is upregulated along with differentiation. CD15 is highly expressed on adult human granulocytes. It has been reported that SSEA-1 plays a role in cell adhesion and regulation of cell differentiation.

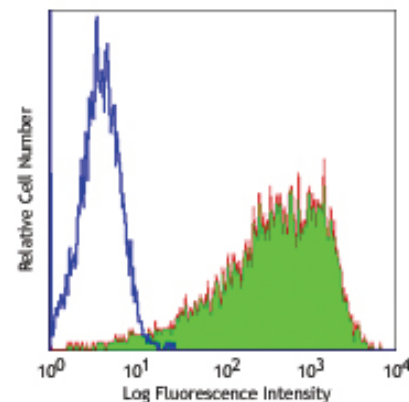
**Antigen References:** 1. Solter D and Knowles BB. 1978. *Proc. Natl. Acad. Sci. USA.* 75:5565.  
2. Harris JF, et al. 1984. *J. Immunol.* 132:2502.  
3. Gooi HC, et al. 1981. *Nature* 292:156.  
4. Cui L, et al. 2004. *J. Histochem. Cytochem.* 52:1447.

### Related Products:

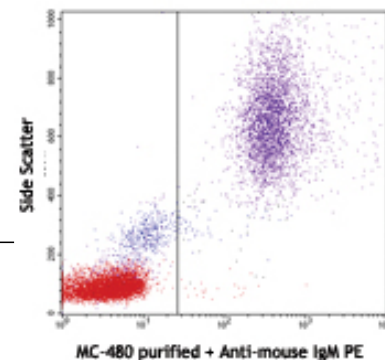
**Product**  
Purified Mouse IgM, κ Isotype Ctrl  
Cell Staining Buffer  
RBC Lysis Buffer (10X)

**Clone**  
MM-30

**Application**  
FC, ICFC, ICC, IF  
FC, ICC, ICFC  
FC, ICFC



F9 (mouse embryonic carcinoma cell line) stained with purified MC-480, followed by anti-mouse IgM-PE



Human peripheral blood lymphocytes, monocytes, granulocytes stained with purified MC-480, followed by anti-mouse IgM PE



For research use only. Not for diagnostic use. Not for resale. BioLegend will not be held responsible for patent infringement or other violations that may occur with the use of our products.



\*These products may be covered by one or more Limited Use Label Licenses (see the BioLegend Catalog or our website, [www.biolegend.com/ordering#license](http://www.biolegend.com/ordering#license)). BioLegend products may not be transferred to third parties, resold, modified for resale, or used to manufacture commercial products, reverse engineer functionally similar materials, or to provide a service to third parties without written approval of BioLegend. By use of these products you accept the terms and conditions of all applicable Limited Use Label Licenses. Unless otherwise indicated, these products are for research use only and are not intended for human or animal diagnostic, therapeutic or commercial use.