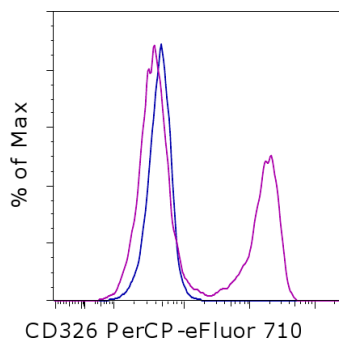


Anti-Mouse CD326 (EpCAM) PerCP-eFluor[®] 710

Catalog Number: 46-5791

Also known as: epithelial cell adhesion molecule

RUO: For Research Use Only. Not for use in diagnostic procedures.



Staining of the TE-71 cell line with 0.03 ug of Rat IgG2a kappa Isotype Control PerCP-eFluor[®] 710 (cat. 46-4321) (blue histogram) or 0.03 ug of Anti-Mouse CD326 (EpCAM) PerCP-eFluor[®] 710 (purple histogram). Total viable cells were used for analysis.

Product Information

Contents: Anti-Mouse CD326 (EpCAM)
PerCP-eFluor[®] 710



Catalog Number: 46-5791

Clone: G8.8

Concentration: 0.2 mg/mL

Host/Isotype: Rat IgG2a, kappa



Formulation: aqueous buffer, 0.09% sodium azide, may contain carrier protein/stabilizer

Temperature Limitation: Store at 2-8°C. Do not freeze. Light-sensitive material.



Batch Code: Refer to vial



Use By: Refer to vial

Description

The G8.8 monoclonal antibody reacts with the 40 kDa protein mouse EpCAM (epithelial cellular adhesion molecule), also known as EGP40 (epithelial glycoprotein 40), 17-1A antigen, TACSTD1 (tumor-associated calcium signal transducer 1), and CD326. The immunogen used to generate the G8.8 antibody was the TE-71 thymic epithelial cell line. CD326 is expressed on the majority of epithelial cells, and is considered a pan-carcinoma antigen. CD326 mediates calcium-independent, homophilic, cell-cell adhesion and may function as a growth factor receptor. The antigen is being used as a target for immunotherapy treatment of human carcinomas. CD326 binds LAIR-1 (CD305) and LAIR-2 (CD306) to inhibit cellular activation and inflammation. This epithelial glycoprotein is now recognized as having an important role in tumor biology.

Applications Reported

This G8.8 antibody has been reported for use in flow cytometric analysis.

Applications Tested

This G8.8 antibody has been tested by flow cytometric analysis of the TE-71 cell line. This can be used at less than or equal to 0.06 µg per test. A test is defined as the amount (µg) of antibody that will stain a cell sample in a final volume of 100 µL. Cell number should be determined empirically but can range from 10⁵ to 10⁸ cells/test. It is recommended that the antibody be carefully titrated for optimal performance in the assay of interest.

PerCP-eFluor[®] 710 can be used in place of PE-Cy5, PE-Cy5.5 or PerCP-Cy5.5. PerCP-eFluor[®] 710 emits at 710 nm and is excited with the blue laser (488 nm). Please make sure that your instrument is capable of detecting this fluorochrome. For a filter configuration, we recommend using the 685 LP dichroic mirror and 710/40 band pass filter, however the 695/40 band pass filter is an acceptable alternative.

Our testing indicates that PerCP-eFluor[®] 710 conjugated antibodies are stable when stained samples are exposed to freshly prepared 2% formaldehyde overnight at 4°C, but please evaluate for alternative fixation protocols.

Click [here](#) or contact eBioscience Technical Support for more information on eFluor[™] Organic Dyes including PerCP-

Not for further distribution without written consent.

Copyright © 2000-2012 eBioscience, Inc.

Tel: 888.999.1371 or 858.642.2058 • Fax: 858.642.2046 • www.ebioscience.com •
info@ebioscience.com

Anti-Mouse CD326 (EpCAM) PerCP-eFluor® 710

Catalog Number: 46-5791

Also known as: epithelial cell adhesion molecule

RUO: For Research Use Only. Not for use in diagnostic procedures.

eFluor® 710.

References

Farr A, Nelson A, Truex J, Hosier S. Epithelial heterogeneity in the murine thymus: a cell surface glycoprotein expressed by subcapsular and medullary epithelium. *J Histochem Cytochem.* 1991 May;39(5):645-53. (**G8.8**, FC, IHC, IP, PubMed)

Borkowski TA, Nelson AJ, Farr AG, Udey MC. Expression of gp40, the murine homologue of human epithelial cell adhesion molecule (Ep-CAM), by murine dendritic cells. *Eur J Immunol.* 1996 Jan;26(1):110-4. (PubMed)

Nelson AJ, Dunn RJ, Peach R, Aruffo A, Farr AG. The murine homolog of human Ep-CAM, a homotypic adhesion molecule, is expressed by thymocytes and thymic epithelial cells. *Eur J Immunol.* 1996 Feb;26(2):401-8. (PubMed)

Dooley J, Erickson M, Farr AG. An organized medullary epithelial structure in the normal thymus expresses molecules of respiratory epithelium and resembles the epithelial thymic rudiment of nude mice. *J Immunol.* 2005 Oct 1;175(7):4331-7. (**G8.8**, FC, IHC, PubMed)

Related Products

46-4321 Rat IgG2a K Isotype Control PerCP-eFluor® 710 (eBR2a)