

## PE anti-mouse Ly-6D

**Catalog # / Size:** 138603 / 25 µg  
138604 / 100 µg

**Clone:** 49-H4

**Isotype:** Rat IgG2c, κ

**Immunogen:** BALB/c mouse plasmacytoma MOPC-104E

**Reactivity:** Mouse

**Preparation:** The antibody was purified by affinity chromatography and conjugated with PE under optimal conditions. The solution is free of unconjugated PE and unconjugated antibody.

**Formulation:** Phosphate-buffered solution, pH 7.2, containing 0.09% sodium azide.

**Concentration:** 0.2 mg/ml

**Storage:** The antibody solution should be stored undiluted at 4°C and protected from prolonged exposure to light. **Do not freeze.**

## Applications:

**Applications:** FC - Quality tested

**Recommended Usage:** Each lot of this antibody is quality control tested by immunofluorescent staining with flow cytometric analysis. For immunofluorescent staining, the suggested use of this reagent is ≤0.06 µg per million cells in 100 µl volume. It is recommended that the reagent be titrated for optimal performance for each application.

**Application References:** 1. Eckhardt LA and Herzenberg LA. 1980. *Immunogenetics* 11:275. (FC)

**Description:** Lymphocyte antigen 6D (Ly-6D), also known as thymocyte B-cell antigen (ThB), is a 16 kD GPI-linked cell surface glycoprotein. It belongs to the Ly6 gene family and contains one urokinase receptor (uPAR) /Ly6 domain. Ly-6D is involved in cell-cell adhesion and signal transduction. Ly-6D marks the earliest stage of B cell lineage commitment from the common lymphoid progenitors (CLP). It is expressed on B cells, immature thymocytes, and plasmacytoid dendritic cells.

**Antigen References:** 1. Inlay MA, *et al.* 2009. *Genes Dev.* 23:2376.  
2. Gumley TP, *et al.* 1995. *Immunol. Cell Biol.* 73:277.  
3. Mansson R, *et al.* 2010. *Blood* 115:2601.  
4. Reese JT, *et al.* 2001. *Dev. Immunol.* 8:107.

### Related Products:

**Product**  
PE Rat IgG2c, κ Isotype Ctrl

Cell Staining Buffer

RBC Lysis Buffer (10X)

TruStain fcX™ (anti-mouse CD16/32)

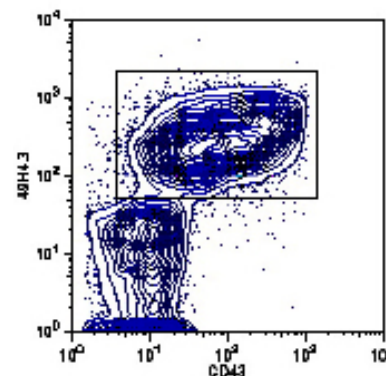
### Clone

RTK4174

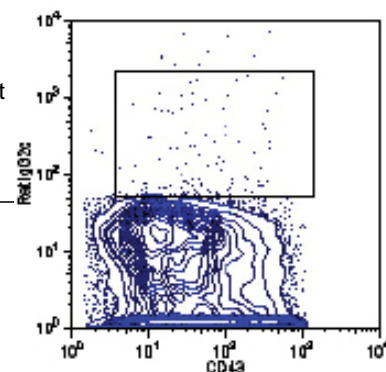
93

### Application

FC, ICFC  
FC, ICC, ICFC  
FC, ICFC  
FC



*IgM- splenocytes from C57BL/6 mouse stained with 49H4.3 PE and CD43 FITC*



*IgM- splenocytes from C57BL/6 mouse stained with isotype control PE and CD43 FITC*



For research use only. Not for diagnostic use. Not for resale. BioLegend will not be held responsible for patent infringement or other violations that may occur with the use of our products.



\*These products may be covered by one or more Limited Use Label Licenses (see the BioLegend Catalog or our website, [www.biolegend.com/ordering#license](http://www.biolegend.com/ordering#license)). BioLegend products may not be transferred to third parties, resold, modified for resale, or used to manufacture commercial products, reverse engineer functionally similar materials, or to provide a service to third parties without written approval of BioLegend. By use of these products you accept the terms and conditions of all applicable Limited Use Label Licenses. Unless otherwise indicated, these products are for research use only and are not intended for human or animal diagnostic, therapeutic or commercial use.