

PE anti-mouse Ly108

Catalog # / Size: 134605 / 25 µg
134606 / 100 µg

Clone: 330-AJ

Isotype: Mouse IgG2a, κ

Immunogen: Thymocytes

Reactivity: Mouse

Preparation: The antibody was purified by affinity chromatography, and conjugated with PE under optimal conditions. The solution is free of unconjugated PE and unconjugated antibody.

Formulation: Phosphate-buffered solution, pH 7.2, containing 0.09% sodium azide.

Concentration: 0.2 mg/ml

Storage: The antibody solution should be stored undiluted at 4°C and protected from prolonged exposure to light. **Do not freeze.**

Applications:

Applications: FC - Quality tested

Recommended Usage: Each lot of this antibody is quality control tested by immunofluorescent staining with flow cytometric analysis. For immunofluorescent staining, the suggested use of this reagent is ≤ 1.0 µg per 10⁶ cells in 100 µl volume. It is recommended that the reagent be titrated for optimal performance for each application.

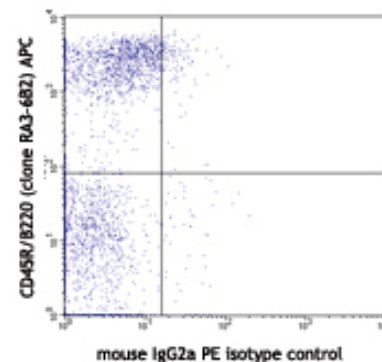
Application References: 1. Fu GF, *et al.* 2012. *Int Immunol.* 24:197. PubMed.

Description: Mouse Ly108, also known as SLAMF6 and NTB-A (NK cell, T cell, B cell antigen), is one of the members in The Signaling Lymphocytic Activation Molecule (SLAM) family of immune receptors. It is expressed on T cells, B cells, macrophages, dendritic cells, NK cells, and granulocytes. Homophilic interaction of Ly108 is involved in augmenting cytotoxicity of NK cells. Ly108 has been shown to function on NK cells by augmenting cytotoxicity. It was reported that Ly108 plays an important role in CD4⁺ T cell responses and innate immunity to bacteria and parasites. In a mouse with a targeted disruption of the Ly108 gene, CD4⁺ T cells and innate responses are defective. SLAM family of receptors has been implicated in the pathophysiology of autoimmunity. For instance, Ly108 is strongly linked to lupus susceptibility in mice. Ly108 may censor self-reactive B cells as a potential regulator of tolerance checkpoints, safeguarding against autoimmunity. Therefore, Ly108 serves as a regulator of both innate and adaptive immune responses.

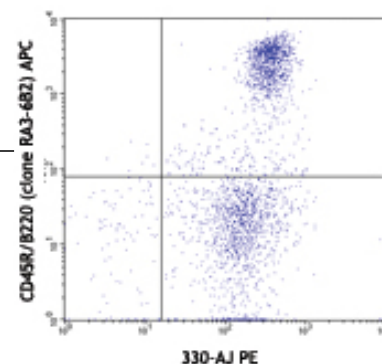
Antigen References: 1. Howie D, *et al.* 2005. *J. Immunology.* 174 (10):5931
2. Kumar KR, *et al.* 2006. *Science.* 312(5780):1665
3. Zhong MC, *et al.* 2008. *J. Biol. Chem.* 283 (28):19255
4. Peck SR *et al.* 2000. *Immunogenetics.* 52:63

Related Products:

Product	Clone	Application
PE Mouse IgG2a, κ Isotype Ctrl	MOPC-173	FC, ICFC
Cell Staining Buffer		FC, ICC, ICFC
RBC Lysis Buffer (10X)		FC, ICFC
TruStain fcX™ (anti-mouse CD16/32)	93	FC



Balb/c mouse splenocytes double stained with 330-AJ PE (lower panel) or mouse IgG2a PE isotype control (upper panel) and anti-mouse CD45R/B220 (clone RA3-6B2) APC



For research use only. Not for diagnostic use. Not for resale. BioLegend will not be held responsible for patent infringement or other violations that may occur with the use of our products.



*These products may be covered by one or more Limited Use Label Licenses (see the BioLegend Catalog or our website, www.biolegend.com/ordering#license). BioLegend products may not be transferred to third parties, resold, modified for resale, or used to manufacture commercial products, reverse engineer functionally similar materials, or to provide a service to third parties without written approval of BioLegend. By use of these products you accept the terms and conditions of all applicable Limited Use Label Licenses. Unless otherwise indicated, these products are for research use only and are not intended for human or animal diagnostic, therapeutic or commercial use.