

Purified anti-mouse Notch 1

Catalog # / Size: 130602 / 500 µg

Clone: HMN1-12

Isotype: Armenian Hamster IgG

Immunogen: Notch1-Fc fusion protein

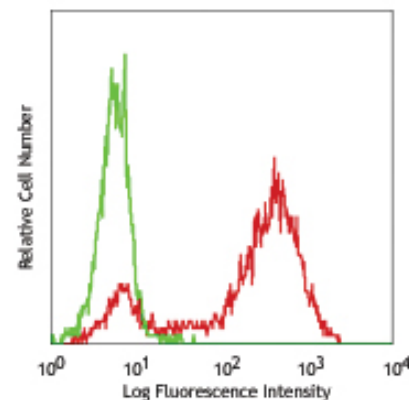
Reactivity: Mouse

Preparation: The antibody was purified by affinity chromatography.

Formulation: Phosphate-buffered solution, pH 7.2, containing 0.09% sodium azide.

Concentration: 0.5 mg/ml

Storage: The antibody solution should be stored undiluted at 4°C.



Mouse Notch-1 transfected cells stained with purified HMN1-12, followed by anti-Armenian hamster IgG PE

Applications:

Applications: FC - Quality tested
IHC - Reported in the literature

Recommended Usage: Each lot of this antibody is quality control tested by immunofluorescent staining with flow cytometric analysis. For immunofluorescent staining, the suggested use of this reagent is ≤ 0.25 µg per million cells in 100 µl volume. It is recommended that the reagent be titrated for optimal performance for each application.

Application References: 1. Moriyama Y, *et al.* 2008. *Int. Immunol.* 20:763.

Description: The Notch receptors are highly conserved from invertebrates to mammals. Notch 1 and Notch 2 exhibit the greatest structural similarity among the four mammalian Notch receptors. Notch 3 has a number of structural and functional differences. The binding of Notch 3 to its ligands results in the proteolysis of Notch and movement of intracellular portions of Notch into the nucleus. This translocation triggers a series of signaling processes. Notch 3 is primarily expressed in adult arterial smooth muscle cells. Notch 3 gene mutation can cause CADASIL, an inherited early stroke syndrome.

Antigen References: 1. Ehebauer ME, *et al.* 2006. *Biochem. J.* 392:13.
2. Shimizu K, *et al.* 2000. *Mol. Cell. Biol.* 20:18.
3. Tanigaki K, *et al.* 2007. *Nature Immunol.* 8:4514.
4. Kraman M, *et al.* 2005. *FASEB J.* 19:1311.

Related Products:

Product
Purified Armenian Hamster IgG Isotype Ctrl
Cell Staining Buffer
RBC Lysis Buffer (10X)

Clone
HTK888

Application

FC, ICC, ICFC, IF, IP, WB
FC, ICC, ICFC
FC, ICFC



For research use only. Not for diagnostic use. Not for resale. BioLegend will not be held responsible for patent infringement or other violations that may occur with the use of our products.



*These products may be covered by one or more Limited Use Label Licenses (see the BioLegend Catalog or our website, www.biolegend.com/ordering#license). BioLegend products may not be transferred to third parties, resold, modified for resale, or used to manufacture commercial products, reverse engineer functionally similar materials, or to provide a service to third parties without written approval of BioLegend. By use of these products you accept the terms and conditions of all applicable Limited Use Label Licenses. Unless otherwise indicated, these products are for research use only and are not intended for human or animal diagnostic, therapeutic or commercial use.