

PE/Cy7 anti-mouse Ly-6C

Catalog # / Size: 128017 / 25 µg
128018 / 100 µg

Clone: HK1.4

Isotype: Rat IgG2c, κ

Immunogen: L3 cloned CTL cells

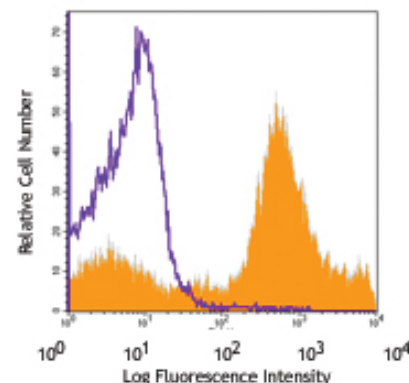
Reactivity: Mouse

Preparation: The antibody was purified by affinity chromatography, and conjugated with PE/Cy7 under optimal conditions. The solution is free of unconjugated PE/Cy7 and unconjugated antibody.

Formulation: Phosphate-buffered solution, pH 7.2, containing 0.09% sodium azide.

Concentration: 0.2 mg/ml

Storage: The antibody solution should be stored undiluted at 4°C and protected from prolonged exposure to light. **Do not freeze.**



C57BL/6 bone marrow cells stained with HK1.4 PE/Cy7

Applications:

Applications: FC - Quality tested

Recommended Usage: Each lot of this antibody is quality control tested by immunofluorescent staining with flow cytometric analysis. For immunofluorescent staining, the suggested use of this reagent is ≤0.06 µg per million cells in 100 µl volume. It is recommended that the reagent be titrated for optimal performance for each application.

Application Notes: Additional reported applications (for relevant formats of this clone) include: *in vitro* activation of T cells^{1-3, 6} and immunohistochemistry of frozen sections⁴.

Cy3, Cy5, Cy5.5 and Cy7 are subject to proprietary rights of GE Healthcare Bio-Sciences Corp. and Carnegie Mellon University and made and sold under license from GE Healthcare Bio-Sciences Corp. Sale of this product is licensed for research use only.

- Application References:**
1. Jutila MA, *et al.* 1988. *Eur. J. Immunol.* 18:1819.
 2. Herold KC, *et al.* 1990. *Diabetes* 39:815.
 3. Havran WL, *et al.* 1988. *J. Immunol.* 140:1034 (Activ)
 4. Flanagan K, *et al.* 2008. *J. Immunol.* 180:3874. (IHC)
 5. Makaroff LE, *et al.* 2009. *P. Natl. Acad. Sci. USA* 106:4799. (FC)
 6. Zuber J, *et al.* 2009. *Genes Dev.* 23:877. (FC) PubMed

Description: Most hemopoietic cells express one or more members of Ly-6 family. The expression of Ly-6 varies with development stage and activation. Ly-6C is a 14-17 kD GPI-linked surface protein expressed on mouse monocyte/macrophage cells, endothelial cells, neutrophils, and some T cell subsets. Ly-6C is reported to be an indicator of memory CD8+ T cells.

- Antigen References:**
1. Jutila MA, *et al.* 1988. *Eur. J. Immunol.* 18:1819.
 2. Cerwenka A, *et al.* 1998. *J. Immunol.* 161:97.

Related Products:	Product	Clone	Application
	PE/Cy7 Rat IgG2c, κ Isotype Ctrl	RTK4174	FC, ICFC
	Cell Staining Buffer		FC, ICC, ICFC
	RBC Lysis Buffer (10X)		FC, ICFC
	TruStain fcX™ (anti-mouse CD16/32)	93	FC



For research use only. Not for diagnostic use. Not for resale. BioLegend will not be held responsible for patent infringement or other violations that may occur with the use of our products.



*These products may be covered by one or more Limited Use Label Licenses (see the BioLegend Catalog or our website, www.biolegend.com/ordering#license). BioLegend products may not be transferred to third parties, resold, modified for resale, or used to manufacture commercial products, reverse engineer functionally similar materials, or to provide a service to third parties without written approval of BioLegend. By use of these products you accept the terms and conditions of all applicable Limited Use Label Licenses. Unless otherwise indicated, these products are for research use only and are not intended for human or animal diagnostic, therapeutic or commercial use.