

FITC anti-mouse Ly-6G

Catalog # / Size: 127605 / 50 µg
127606 / 500 µg

Clone: 1A8

Isotype: Rat IgG2a, κ

Immunogen: Ly-6G transfected EL-4J cell line

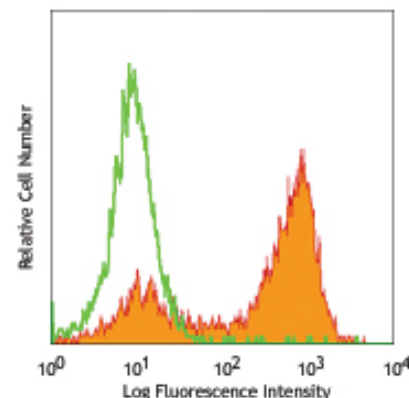
Reactivity: Mouse

Preparation: The antibody was purified by affinity chromatography, and conjugated with FITC under optimal conditions. The solution is free of unconjugated FITC.

Formulation: Phosphate-buffered solution, pH 7.2, containing 0.09% sodium azide.

Concentration: 0.5 mg/ml

Storage: The antibody solution should be stored undiluted at 4°C and protected from prolonged exposure to light. **Do not freeze.**



BALB/c mouse bone marrow cells stained with 1A8 FITC (gated on myeloid cells)

Applications:

Applications: FC Quality tested

Recommended Usage: Each lot of this antibody is quality control tested by immunofluorescent staining with flow cytometric analysis. For immunofluorescent staining, the suggested use of this reagent is ≤ 0.25 µg per 10⁶ cells in 100 µl volume. It is recommended that the reagent be titrated for optimal performance for other applications.

Application Notes: While 1A8 recognizes only Ly-6G, clone RB6-8C5 recognizes both Ly-6G and Ly-6C. Additional reported applications (for the relevant formats) include: immunohistochemistry⁹ of frozen sections¹⁰ and paraffin-embedded sections¹¹, and depletion. The LEAF™ purified antibody (Endotoxin <0.1 EU/µg, Azide-Free, 0.2 µm filtered) is recommended for functional assays (Cat. No. 127620). For *in vivo* studies or highly sensitive assays, we recommend Ultra-LEAF™ purified antibody (Cat. No. 127632) with a lower endotoxin limit than standard LEAF™ purified antibodies (Endotoxin <0.01 EU/µg).

- Application References:**
1. Fleming TJ, *et al.* 1993. *J. Immunol.* 151:2399. (FC)
 2. Daley JM, *et al.* 2008. *J. Leukocyte Biol.* 83:1. (FC)
 3. Dietlin TA, *et al.* 2007. *J. Leukocyte Biol.* 81:1205. (FC)
 4. Daley J, *et al.* 2007. *J. Leukocyte Biol.* doi:10.1189. (Deplete) PubMed
 5. Tadagavadi RK, *et al.* 2010. *J. Immunol.* 185:4904. PubMed
 6. Sumagin R, *et al.* 2010. *J. Immunol.* 185:7057. PubMed
 7. Guiducci C, *et al.* 2010. *J. Exp Med.* 207:2931. PubMed
 8. Fujita M, *et al.* 2011. *Cancer Res.* 71:2664. PubMed
 9. Van Leeuwen, *et al.* 2008. *Arterioscler. Thromb. Vasc. Biol.* 28:84. (IHC)
 10. Kowanetz M, *et al.* 2010. *P. Natl. Acad. Sci. USA* 107:21248. [supplementary data] (IHC)
 11. Gelderblom M, *et al.* 2012. *Blood* 120:3793. [supplementary data] (IHC)
 12. Fujikura D, *et al.* 2013. *PLoS One.* 8:e55321. PubMed.

Description: Lymphocyte antigen 6 complex, locus G (Ly-6G), a 21-25 kD GPI-anchored protein, is expressed on the majority of myeloid cells in bone marrow and peripheral granulocytes.

Antigen References: Fleming TJ, *et al.* 1993. *J. Immunol.* 151:2399.

Related Products: Product

FITC Rat IgG2a, κ Isotype Ctrl

Cell Staining Buffer

RBC Lysis Buffer (10X)

TruStain fcX™ (anti-mouse CD16/32)

Clone

RTK2758

93

Application

FC, ICFC

FC, ICC, ICFC

FC, ICFC

FC



For research use only. Not for diagnostic use. Not for resale. BioLegend will not be held responsible for patent infringement or other violations that may occur with the use of our products.



*These products may be covered by one or more Limited Use Label Licenses (see the BioLegend Catalog or our website, www.biolegend.com/ordering#license). BioLegend products may not be transferred to third parties, resold, modified for resale, or used to manufacture commercial products, reverse engineer functionally similar materials, or to provide a service to third parties without written approval of BioLegend. By use of these products you accept the terms and conditions of all applicable Limited Use Label Licenses. Unless otherwise indicated, these products are for research use only and are not intended for human or animal diagnostic, therapeutic or commercial use.