

## FITC anti-mouse IgDa

**Catalog # / Size:** 406104 / 500 µg

**Clone:** AMS-9.1

**Isotype:** Mouse (SJL) IgG2b, κ

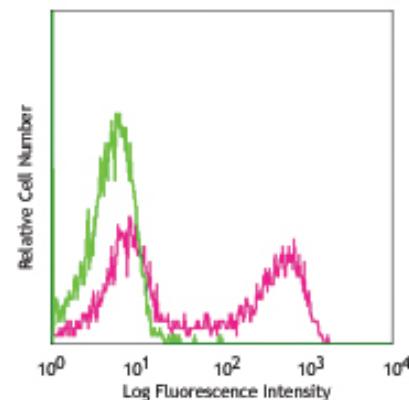
**Reactivity:** Mouse

**Preparation:** The antibody was purified by affinity chromatography, and conjugated with FITC under optimal conditions. The solution is free of unconjugated FITC.

**Formulation:** Phosphate-buffered solution, pH 7.2, containing 0.09% sodium azide and 0.2% (w/v) BSA (origin USA).

**Concentration:** 0.5 mg/ml

**Storage:** The antibody solution should be stored undiluted at 4°C and protected from prolonged exposure to light. **Do not freeze.**



BALB/c mouse splenocytes stained with AMS-9.1 FITC

## Applications:

**Applications:** FC - *Quality tested*

**Recommended Usage:** Each lot of this antibody is quality control tested by immunofluorescent staining with flow cytometric analysis. For immunofluorescent staining, the suggested use of this reagent is  $\leq 0.25$  µg per  $10^6$  cells in 100 µl volume. It is recommended that the reagent be titrated for optimal performance for each application.

**Application Notes:** Additional reported applications (for the relevant formats) include: immunohistochemical staining of acetone-fixed frozen sections.

**Application References:** 1. Stall AM, *et al.* 1984. *J. Immunol.* 132:787.  
2. Goroff DK, *et al.* 1986. *J. Immunol.* 136:2382.

**Description:** This antibody was raised by immunization with BALB/c mouse splenocytes. It specifically reacts with mouse IgD of *Igh-C<sup>a</sup>* haplotype, but does not react with b and c haplotypes. This antibody is able to induce B cell activation and proliferation.

**Related Products:** **Product**  
FITC Mouse IgG2b, κ Isotype Ctrl  
Cell Staining Buffer

**Clone**  
MPC-11

**Application**  
FC, ICFC  
FC, ICC, ICFC



For research use only. Not for diagnostic use. Not for resale. BioLegend will not be held responsible for patent infringement or other violations that may occur with the use of our products.



\*These products may be covered by one or more Limited Use Label Licenses (see the BioLegend Catalog or our website, [www.biolegend.com/ordering#license](http://www.biolegend.com/ordering#license)). BioLegend products may not be transferred to third parties, resold, modified for resale, or used to manufacture commercial products, reverse engineer functionally similar materials, or to provide a service to third parties without written approval of BioLegend. By use of these products you accept the terms and conditions of all applicable Limited Use Label Licenses. Unless otherwise indicated, these products are for research use only and are not intended for human or animal diagnostic, therapeutic or commercial use.