

FITC anti-human/mouse Integrin $\beta 7$

Catalog # / Size: 321213 / 50 μ g
 321212 / 100 tests
 321214 / 500 μ g

Clone: FIB504

Isotype: Rat IgG2a, κ

Workshop Number: VI 6T-101, VI A024

Immunogen: TK1 cells

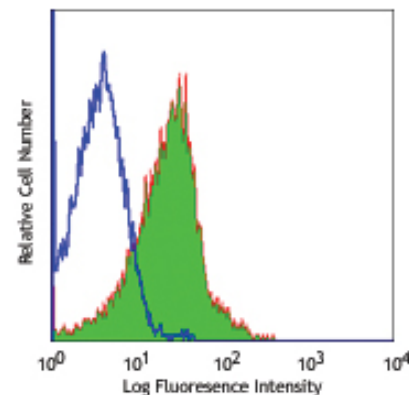
Reactivity: Human, Mouse, **Cross-Reactivity:** Chimpanzee, Baboon, Cynomolgus, Rhesus

Preparation: The antibody was purified by affinity chromatography, and conjugated with FITC under optimal conditions. The solution is free of unconjugated FITC.

Formulation: test size: Phosphate-buffered solution, pH 7.2, containing 0.09% sodium azide and 0.2% (w/v) BSA (origin USA).
 μ g sizes: Phosphate-buffered solution, pH 7.2, containing 0.09% sodium azide.

Concentration: test size: lot-specific; μ g sizes: 0.5 mg/ml

Storage: The antibody solution should be stored undiluted at 4°C and protected from prolonged exposure to light. **Do not freeze.**



C57BL/6 mouse splenocytes stained with FIB504 FITC

Applications:

Applications: FC - Quality tested

Recommended Usage: Each lot of this antibody is quality control tested by immunofluorescent staining with flow cytometric analysis. **Test size products are transitioning from 20 μ l to 5 μ l per test.** Please check your vial or your CoA to find the suggested use of this reagent per million cells in 100 μ l staining volume or per 100 μ l of whole blood. It is recommended that the reagent be titrated for optimal performance for each application. Read more at www.biolegend.com/testsize regarding the test size change.

Application Notes: The FIB504 antibody has been reported to react with mouse and human $\beta 7$ integrin and to block $\beta 7$ integrin-mediated cell adhesion in *in vitro* and *in vivo* studies. Additional reported applications (for the relevant formats) include: blocking of cell adhesion^{1,3,4}. The LEAF™ purified FIB504 antibody (Endotoxin <0.1 EU/ μ g, Azide-Free, 0.2 μ m filtered) is recommended for functional assays (Cat. No. 321218).

Application References:

- Andrew DP, *et al.* 1994. *J. Immunol.* 153:3847. (Block)
- Berlin C, *et al.* 1993. *Cell* 74:185.
- Rott LS, *et al.* 1996. *J. Immunol.* 156:3727. (Block)
- Rivera-Nieves J, *et al.* 2005. *J. Immunol.* 174:2343. (Block)
- Ohmori K, *et al.* 2009. *J. Immunol.* 182:2835. PubMed
- Yoshino N, *et al.* 2000. *Exp. Anim. (Tokyo)* 49:97. (FC)

Description: Integrin $\beta 7$ is a 130 kD glycoprotein also known as integrin βp . It is a member of the Ig superfamily. In association with integrin $\alpha 4$ or αE chain, $\beta 7$ forms $\alpha 4/\beta 7$ or $\alpha E/\beta 7$ heterodimer. $\alpha 4/\beta 7$ (CD49d/ $\beta 7$, LPAM-1) is expressed on the majority of peripheral lymphocytes, on small subsets of thymocytes, and bone marrow progenitors. LPAM-1 binds to several ligands, VCAM-1, MAdCAM-1 and fibronectin, and is involved in lymphocyte adhesion and some hematopoietic progenitor cells migration. $\alpha E/\beta 7$ (CD103/ $\beta 7$, $\alpha_{IEL}/\beta 7$) is expressed on intestinal intraepithelial lymphocytes (IEL), dendritic epidermal T cells, T regulatory cells, a subset of CD8+ T cells in lymph nodes and lamina propria. CD103/ $\beta 7$ complex is thought to play a role in lymphocyte retention via interaction with its ligand E-Cadherin.

Antigen References:

- Andrew DP, *et al.* 1994. *J. Immunol.* 153:3847.
- Picarella D, *et al.* 1997. *J. Immunol.* 158:2099.
- Lefrancois L, *et al.* 1994. *Eur. J. Immunol.* 24:635
- Cepek KL, *et al.* 1994. *Nautre* 372:190.

Related Products: Product

Cell Staining Buffer
 RBC Lysis Buffer (10X)
 FITC Rat IgG2a, κ Isotype Ctrl
 Human TruStain FcX™ (Fc Receptor Blocking Solution)

Clone

RTK2758

Application

FC, ICC, ICFC
 FC, ICFC
 FC, ICFC
 FC, ICC, ICFC



For research use only. Not for diagnostic use. Not for resale. BioLegend will not be held responsible for patent infringement or other violations that may occur with the use of our products.



*These products may be covered by one or more Limited Use Label Licenses (see the BioLegend Catalog or our website, www.biolegend.com/ordering#license). BioLegend products may not be transferred to third parties, resold, modified for resale, or used to manufacture commercial products, reverse engineer functionally similar materials, or to provide a service to third parties without written approval of BioLegend. By use of these products you accept the terms and conditions of all applicable Limited Use Label Licenses. Unless otherwise indicated, these products are for research use only and are not intended for human or animal diagnostic, therapeutic or commercial use.