

## PE anti-mouse/human KLRG1 (MAFA)

**Catalog # / Size:** 138407 / 25 µg  
138408 / 100 µg

**Clone:** 2F1/KLRG1

**Isotype:** Syrian hamster IgG

**Immunogen:** IL-2 activated NK cells from C57BL/6 mice

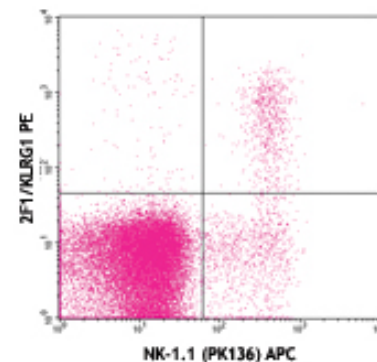
**Reactivity:** Mouse, Human

**Preparation:** The antibody was purified by affinity chromatography and conjugated with PE under optimal conditions. The solution is free of unconjugated PE and unconjugated antibody.

**Formulation:** Phosphate-buffered solution, pH 7.2, containing 0.09% sodium azide.

**Concentration:** 0.2 mg/ml

**Storage:** The antibody solution should be stored undiluted at 4°C and protected from prolonged exposure to light. **Do not freeze.**



C57BL/6 mouse splenocytes stained with NK-1.1 (PK136) APC and 2F1/KLRG1 PE

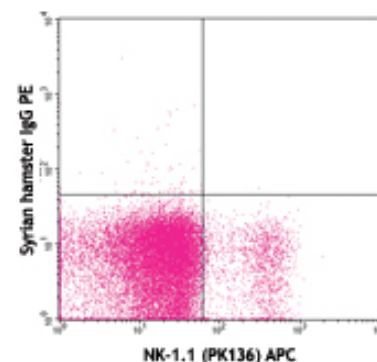
## Applications:

**Applications:** FC - Quality tested

**Recommended Usage:** Each lot of this antibody is quality control tested by immunofluorescent staining with flow cytometric analysis. For immunofluorescent staining, the suggested use of this reagent is ≤0.25 µg per million cells in 100 µl volume. It is recommended that the reagent be titrated for optimal performance for each application.

**Application Notes:** Additional reported applications (for relevant formats) include: Western Blotting<sup>1</sup>.

*This product may be used for research purposes only. It is not licensed for resale and may only be used by the buyer. This product may not be used and is not licensed for clinical assays, where the results of such assays are provided as a diagnostic service. If a diagnostic or therapeutic use is anticipated, then a license must be requested from the University of California. The availability of such diagnostic and therapeutic use license(s) cannot be guaranteed from the University of California.*



C57BL/6 mouse splenocytes stained with NK-1.1 (PK136) APC and Syrian hamster IgG PE isotype control

**Application References:**

1. Robbins SH, et al. 2002. *J. Immunol.* 168:2585. (WB)
2. Robbins SH, et al. 2003. *J. Immunol.* 170:5876. (FC)
3. McMahon CW, et al. 2002. *J. Immunol.* 169:1444. (FC)

**Description:** Killer cell lectin-like receptor G1 (KLRG1) is the mouse homolog of the rat mast cell function-associated antigen (MAFA or 2F1-Ag). KLRG1 is a type II membrane glycoprotein that was first identified on the surface of rat mast cell line RBL-2H3. It is composed of a homodimer of glycosylated 30-38 kD subunits. Mouse and human homologs of KLRG1 are expressed by subsets of NK cells and lymphokine-activated killer (LAK) cells but not mast cells. KLRG1 is also expressed on subsets of CD8<sup>+</sup> and CD4<sup>+</sup> cells, including CD4<sup>+</sup> and CD8<sup>+</sup> effector/memory cells, potent regulatory CD4<sup>+</sup> T cells. KLRG1 may be involved in regulating NK cell homeostasis. KLRG1 was recently found to recognize cadherins and thus inhibit immune responses by regulating the effector function and the developmental processes of NK and T cells.

**Antigen References:**

1. Grundemann C, et al. 2006. *J. Immunol.* 176:1311.
2. Blaser C, et al. 1998. *J. Immunol.* 161:6451.
3. Huntington ND, et al. 2007. *J. Immunol.* 178:4764.
4. Voehringer D, et al. 2001. *J. Immunol.* 167:4834.

Related Products:	Product	Clone	Application
	PE Syrian Hamster IgG Isotype Ctrl	SHG-1	FC, ICFC
	Cell Staining Buffer		FC, ICC, ICFC
	RBC Lysis Buffer (10X)		FC, ICFC
	TruStain fcX™ (anti-mouse CD16/32)	93	FC



For research use only. Not for diagnostic use. Not for resale. BioLegend will not be held responsible for patent infringement or other violations that may occur with the use of our products.



\*These products may be covered by one or more Limited Use Label Licenses (see the BioLegend Catalog or our website, [www.biolegend.com/ordering#license](http://www.biolegend.com/ordering#license)). BioLegend products may not be transferred to third parties, resold, modified for resale, or used to manufacture commercial products, reverse engineer functionally similar materials, or to provide a service to third parties without written approval of BioLegend. By use of these products you accept the terms and conditions of all applicable Limited Use Label Licenses. Unless otherwise indicated, these products are for research use only and are not intended for human or animal diagnostic, therapeutic or commercial use.