

# Product Data Sheet

## Purified anti-mouse lymphotoxin beta receptor (LT $\beta$ R)

**Catalog # / Size:** 134402 / 100  $\mu$ g

**Clone:** 5G11

**Isotype:** Rat IgG2a,  $\kappa$

**Immunogen:** *E.coli* expressed extracellular domain of mouse lymphotoxin beta receptor

**Reactivity:** Mouse

**Preparation:** The antibody was purified by affinity chromatography.

**Formulation:** Phosphate-buffered solution, pH 7.2, containing 0.09% sodium azide.

**Concentration:** 0.5 mg/ml

**Storage:** The antibody solution should be stored undiluted at 4°C.

## Applications:

**Applications:** FC - Quality tested  
 ELISA Reported in the literature

**Recommended Usage:** Each lot of this antibody is quality control tested by immunofluorescent staining with flow cytometric analysis. For immunofluorescent staining, the suggested use of this reagent is  $\leq 1.0 \mu$ g per  $10^6$  cells in 100  $\mu$ l volume. It is recommended that the reagent be titrated for optimal performance for each application.

**Description:** LT $\beta$ R is a type I transmembrane glycoprotein and member of the TNF receptor superfamily. It is a 61 KDa receptor for the mouse LT $\alpha$ 1 $\beta$ 2 and LIGHT. Northern blot analysis of tissues from adult mice showed that expression levels of LT $\beta$ R mRNA were strong in lung, liver, and kidney, moderate in heart and testes, but weak in brain, thymus, spleen, and lymph nodes. It was reported that LT $\beta$ R is expressed on stromal cells, monocytes, and certain embryonic epithelial layers. LT $\beta$ R is involved in peripheral lymphoid tissue organogenesis and function. The LT $\alpha$ /LT $\beta$ R receptor system may also have some function in early embryogenesis.

**Antigen References:**

1. Force WR, *et al.* 1995. *J. Immunol.* 155:5280
2. Tamada K, *et al.* 2000. *J. Immunol.* 164:4105
3. Browing JL, *et al.* 1997. *J. Immunol.* 159:3288
4. Futterer A, *et al.* 1998. *Immunity* 9:59
5. Nakamura T, *et al.* 1995. *Genomics* 30:312
6. Crowe P, *et al.* 1996. *Science* 264:707
7. Dejardin E, *et al.* *Immunity* 2002. 17(4):525

### Related Products:

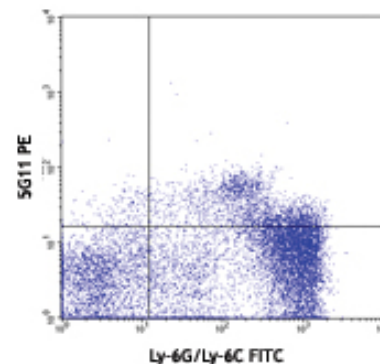
Purified Rat IgG2a,  $\kappa$  Isotype Ctrl  
 Cell Staining Buffer  
 RBC Lysis Buffer (10X)

### Clone

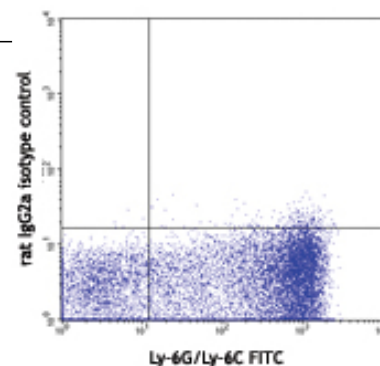
RTK2758

### Application

FC, ICC, IF, IHC, IP, WB  
 FC, ICC, ICFC  
 FC, ICFC



C57BL/6 bone marrow cells stained with purified 5G11 conjugated to PE (Upper panel) or rat IgG2a isotype control PE (Lower panel) and Ly-6G/Ly-6C FITC



For research use only. Not for diagnostic use. Not for resale. BioLegend will not be held responsible for patent infringement or other violations that may occur with the use of our products.



\*These products may be covered by one or more Limited Use Label Licenses (see the BioLegend Catalog or our website, [www.biolegend.com/ordering#license](http://www.biolegend.com/ordering#license)). BioLegend products may not be transferred to third parties, resold, modified for resale, or used to manufacture commercial products, reverse engineer functionally similar materials, or to provide a service to third parties without written approval of BioLegend. By use of these products you accept the terms and conditions of all applicable Limited Use Label Licenses. Unless otherwise indicated, these products are for research use only and are not intended for human or animal diagnostic, therapeutic or commercial use.