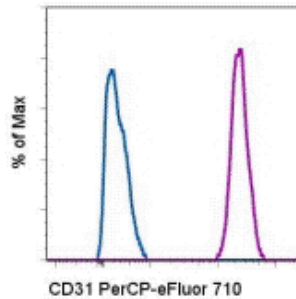


Anti-Human CD31 (PECAM-1) PerCP-eFluor® 710

Catalog Number: 46-0319

Also Known As: Platelet-Endothelial Cell Adhesion Molecule 1

RUO: For Research Use Only. Not for use in diagnostic procedures.



Staining of normal human peripheral blood cells with Mouse IgG1 K Isotype Control PerCP-eFluor® 710 (cat. 46-4714) (blue histogram) or Anti-Human CD31 (PECAM-1) PerCP-eFluor® 710 (purple histogram). Cells in the monocyte gate were used for analysis.

Product Information

Contents: Anti-Human CD31 (PECAM-1) PerCP-eFluor® 710

REF **Catalog Number:** 46-0319


Clone: WM-59 (WM59)

Concentration: 5 µL (0.125 µg)/test

Host/Isotype: Mouse IgG1, kappa


HLDA Workshop: V P025

Formulation: aqueous buffer, 0.09% sodium azide, may contain carrier protein/stabilizer

 **Temperature Limitation:** Store at 2-8°C. Do not freeze. Light sensitive material.

 **Batch Code:** Refer to Vial

 **Use By:** Refer to Vial

 **Caution, contains Azide**

Description

The WM59 monoclonal antibody reacts with human CD31, also known as platelet-endothelial cell adhesion molecule-1 (PECAM-1) and gpIIa. This 130-140 kDa surface protein is expressed by endothelial cells and at low levels on leukocytes and platelets. It has been reported that CD38 binds to CD31. Homotypic interaction of CD31 is important in adhesion, cell-cell and cell-matrix interaction, and signal transduction.

Applications Reported

This WM-59 (WM59) antibody has been reported for use in flow cytometric analysis.

Applications Tested

This WM-59 (WM59) antibody has been pre-titrated and tested by flow cytometric analysis of normal human peripheral blood cells. This can be used at 5 µL (0.125 µg) per test. A test is defined as the amount (µg) of antibody that will stain a cell sample in a final volume of 100 µL. Cell number should be determined empirically but can range from 10⁵ to 10⁸ cells/test.

PerCP-eFluor® 710 can be used in place of PE-Cy5, PE-Cy5.5 or PerCP-Cy5.5. PerCP-eFluor® 710 emits at 710 nm and is excited with the blue laser (488 nm). Please make sure that your instrument is capable of detecting this fluorochrome. For a filter configuration, we recommend using the 685 LP dichroic mirror and 710/40 band pass filter, however the 695/40 band pass filter is an acceptable alternative.

Fixation: Samples can be stored in IC Fixation Buffer (cat. 00-8222) (100 µL cell sample + 100 µL IC Fixation Buffer) or 1-step Fix/Lyse Solution (cat. 00-5333) for up to 3 days in the dark at 4°C with minimal impact on brightness and FRET efficiency/compensation. Some generalizations regarding fluorophore performance after fixation can be made, but clone specific performance should be determined empirically.

References

Porat Y, Porozov S, Belkin D, Shimoni D, Fisher Y, Belleli A, Czeiger D, Silverman WF, Belkin M, Battler A, Fulga V, Savion N. Isolation of an adult blood-derived progenitor cell population capable of differentiation into angiogenic, myocardial and neural lineages. *British Journal of Haematology* 2006 (**WM-59**, ICC, PubMed)

Kishimoto, T., A.E.G., von dem Borne, et al. eds. (1998) *Leucocyte Typing VI: White Cell Differentiation Antigens*. Garland Publishing, Inc. London.

Schlossman, S., L. Bloumsell, et al. eds. 1995. *Leucocyte Typing V: White Cell Differentiation Antigens*. Oxford University Press. New York.

Related Products

46-4714 Mouse IgG1 K Isotype Control PerCP-eFluor® 710 (P3.6.2.8.1)

Not for further distribution without written consent.

Copyright © 2000-2012 eBioscience, Inc.

Tel: 888.999.1371 or 858.642.2058 • Fax: 858.642.2046 • www.eBioscience.com • info@eBioscience.com