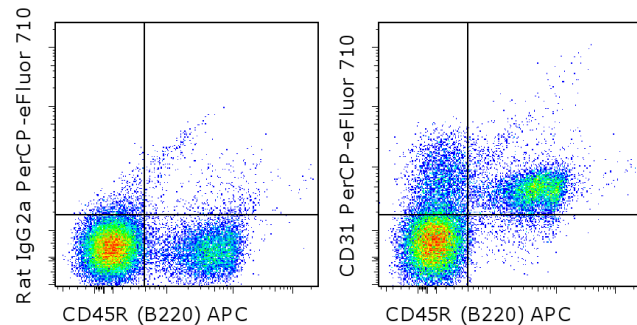


## Anti-Mouse CD31 (PECAM-1) PerCP-eFluor<sup>®</sup> 710

**Catalog Number:** 46-0311

**Also known as:** Platelet-Endothelial Cell Adhesion Molecule 1, PE-CAM1

**RUO: For Research Use Only. Not for use in diagnostic procedures.**



Staining of BALB/c bone marrow cells with Anti-Human/Mouse CD45R (B220) APC (cat. 17-0452) and 0.06 ug of Rat IgG2a K Isotype Control PerCP-eFluor<sup>®</sup> 710 (cat. 46-4321) (left) or 0.06 ug of Anti-Mouse CD31 (PECAM-1) PerCP-eFluor<sup>®</sup> 710 (right). Cells in the small scatter population were used for analysis.

### Product Information

**Contents:** Anti-Mouse CD31 (PECAM-1)  
PerCP-eFluor<sup>®</sup> 710

**REF** **Catalog Number:** 46-0311

**Clone:** 390

**Concentration:** 0.2 mg/mL

**Host/Isotype:** Rat IgG2a, kappa

**Formulation:** aqueous buffer, 0.09% sodium azide, may contain carrier protein/stabilizer

**Temperature Limitation:** Store at 2-8°C. Do not freeze. Light sensitive material.

**Batch Code:** Refer to vial

**Use By:** Refer to vial

**Contains sodium azide**



### Description

The 390 monoclonal antibody reacts with mouse CD31, also known as platelet-endothelial cell adhesion molecule-1 (PECAM-1) and gp130. This 130-140 kDa surface protein is expressed by endothelial cells and at low levels on all leukocytes and platelets. It has been reported that CD38 binds to CD31. Homotypic interaction of CD31 is important in adhesion, cell-cell and cell-matrix interaction, and signal transduction.

### Applications Reported

This 390 antibody has been reported for use in flow cytometric analysis.

### Applications Tested

This 390 antibody has been tested by flow cytometric analysis of mouse spleen and bone marrow cells. This can be used at less than or equal to 0.125 µg per test. A test is defined as the amount (µg) of antibody that will stain a cell sample in a final volume of 100 µL. Cell number should be determined empirically but can range from 10<sup>5</sup> to 10<sup>8</sup> cells/test. It is recommended that the antibody be carefully titrated for optimal performance in the assay of interest.

**PerCP-eFluor<sup>®</sup> 710 can be used in place of PE-Cy5, PE-Cy5.5 or PerCP-Cy5.5. PerCP-eFluor<sup>®</sup> 710 emits at 710 nm and is excited with the blue laser (488 nm). Please make sure that your instrument is capable of detecting this fluorochrome. For a filter configuration, we recommend using the 685 LP dichroic mirror and 710/40 band pass filter, however the 695/40 band pass filter is an acceptable alternative.**

**Fixation: Samples can be stored in IC Fixation Buffer (cat. 00-8222) (100 uL cell sample + 100 uL IC Fixation Buffer) or 1-step Fix/Lyse Solution (cat. 00-5333) for up to 3 days in the dark at 4°C with minimal impact on brightness and FRET efficiency/compensation. Some generalizations regarding fluorophore performance after fixation can be made, but clone specific performance should be determined empirically.**

### References

Sadri N, Schneider RJ. Auf1/Hnmpd-Deficient Mice Develop Pruritic Inflammatory Skin Disease. J Invest Dermatol. 2009 Mar;129(3):657-70. (390, IHC frozen, PubMed)

Not for further distribution without written consent.

Copyright © 2000-2012 eBioscience, Inc.

Tel: 888.999.1371 or 858.642.2058 • Fax: 858.642.2046 • www.ebioscience.com •  
info@ebioscience.com

---

## Anti-Mouse CD31 (PECAM-1) PerCP-eFluor® 710

**Catalog Number:** 46-0311

**Also known as:** Platelet-Endothelial Cell Adhesion Molecule 1, PE-CAM1

**RUO: For Research Use Only. Not for use in diagnostic procedures.**

---

Cao G, O'Brien CD, Zhou Z, Sanders SM, Greenbaum JN, Makrigiannakis A, DeLisser HM. Involvement of human PECAM-1 in angiogenesis and in vitro endothelial cell migration. *Am J Physiol Cell Physiol.* 2002 May;282(5):C1181-90. (390, IHC frozen)

Wiewrodt R, Anu P, Thomas, Luca Cipelletti, Melpo Christofidou-Solomidou, David A. Weitz, Sheldon I. Feinstein, David Schaffer, Steven M. Albelda, Michael Koval, and Vladimir R. Muzykantov. Size-dependent intracellular immunotargeting of therapeutic cargoes into endothelial cells. *Blood.* 2002 Feb 1;99(3):912-22.

Horenstein AL, Stockinger H, Imhof BA, Malavasi F. CD38 binding to human myeloid cells is mediated by mouse and human CD31. *Biochem J.* 1998 Mar 15;330 (Pt 3):1129-35.

Baldwin HS, Shen HM, Yan HC, DeLisser HM, Chung A, Mickanin C, Trask T, Kirschbaum NE, Newman PJ, Albelda SM, et al. Platelet endothelial cell adhesion molecule-1 (PECAM-1/CD31): alternatively spliced, functionally distinct isoforms expressed during mammalian cardiovascular development. *Development.* 1994 Sep;120(9):2539-53.

### Related Products

17-0452 Anti-Human/Mouse CD45R (B220) APC (RA3-6B2)

46-4321 Rat IgG2a K Isotype Control PerCP-eFluor® 710 (eBR2a)

---

Not for further distribution without written consent.

Copyright © 2000-2012 eBioscience, Inc.

Tel: 888.999.1371 or 858.642.2058 • Fax: 858.642.2046 • [www.ebioscience.com](http://www.ebioscience.com) •  
[info@ebioscience.com](mailto:info@ebioscience.com)